

E14887 Braintree District Settlement Fringes
Evaluation of Landscape Analysis

Braintree and Environs

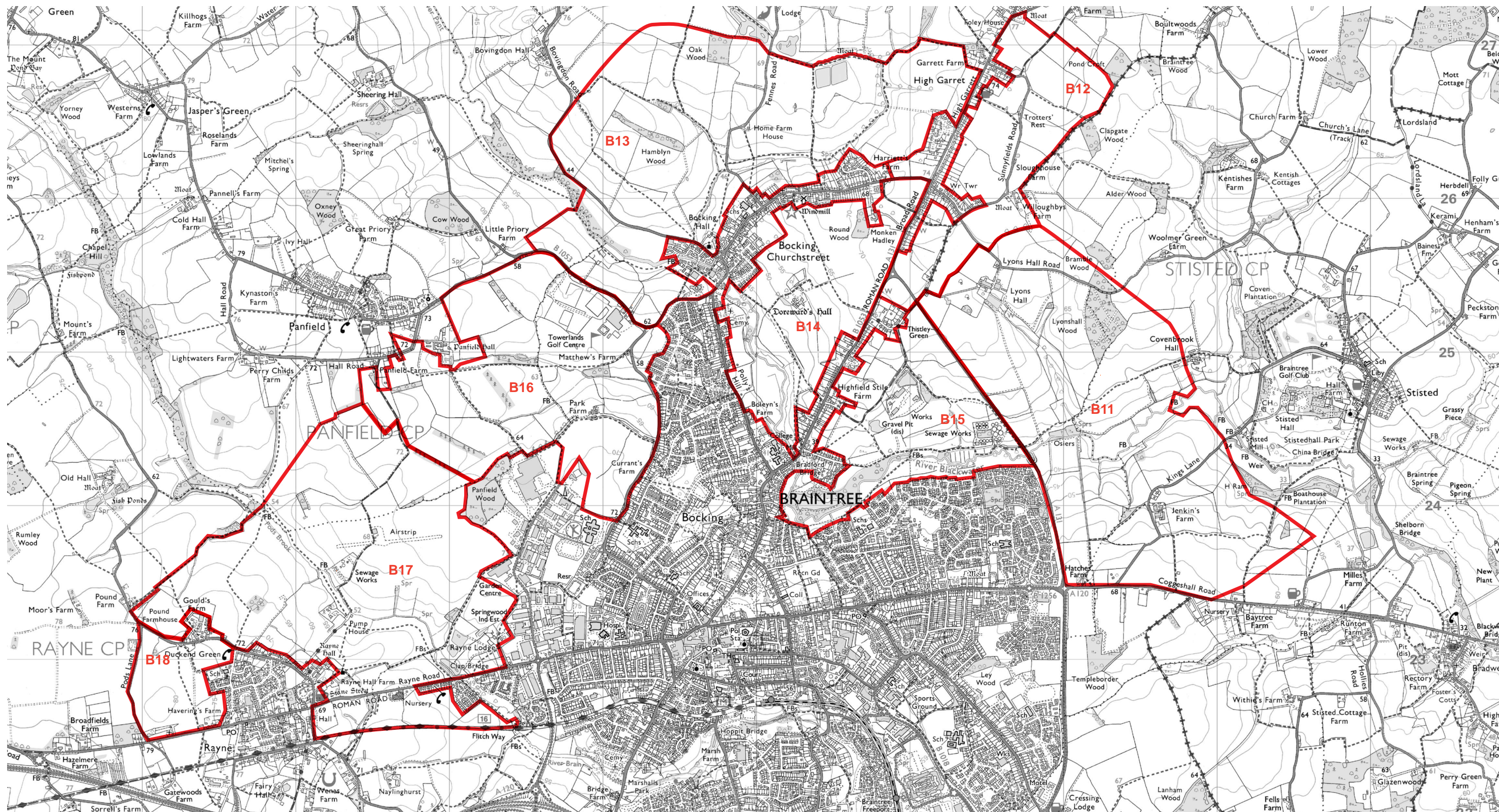
Location Plan

Figure B-01

Scale: 1:25,000 @ A3

May 2015





Reproduced from the Ordnance Survey map with the permission of the controller of Her Majesty's Stationery Office. Licence number: AL 10002205. © CROWN COPYRIGHT.

Key

- Landscape Setting Areas
- as identified in Landscape Capacity Analysis (2007) by Chris Blandford Associates

E14887 Braintree District Settlement Fringes Evaluation of Landscape Analysis

Braintree and Environs

Landscape Setting Areas (11-18)

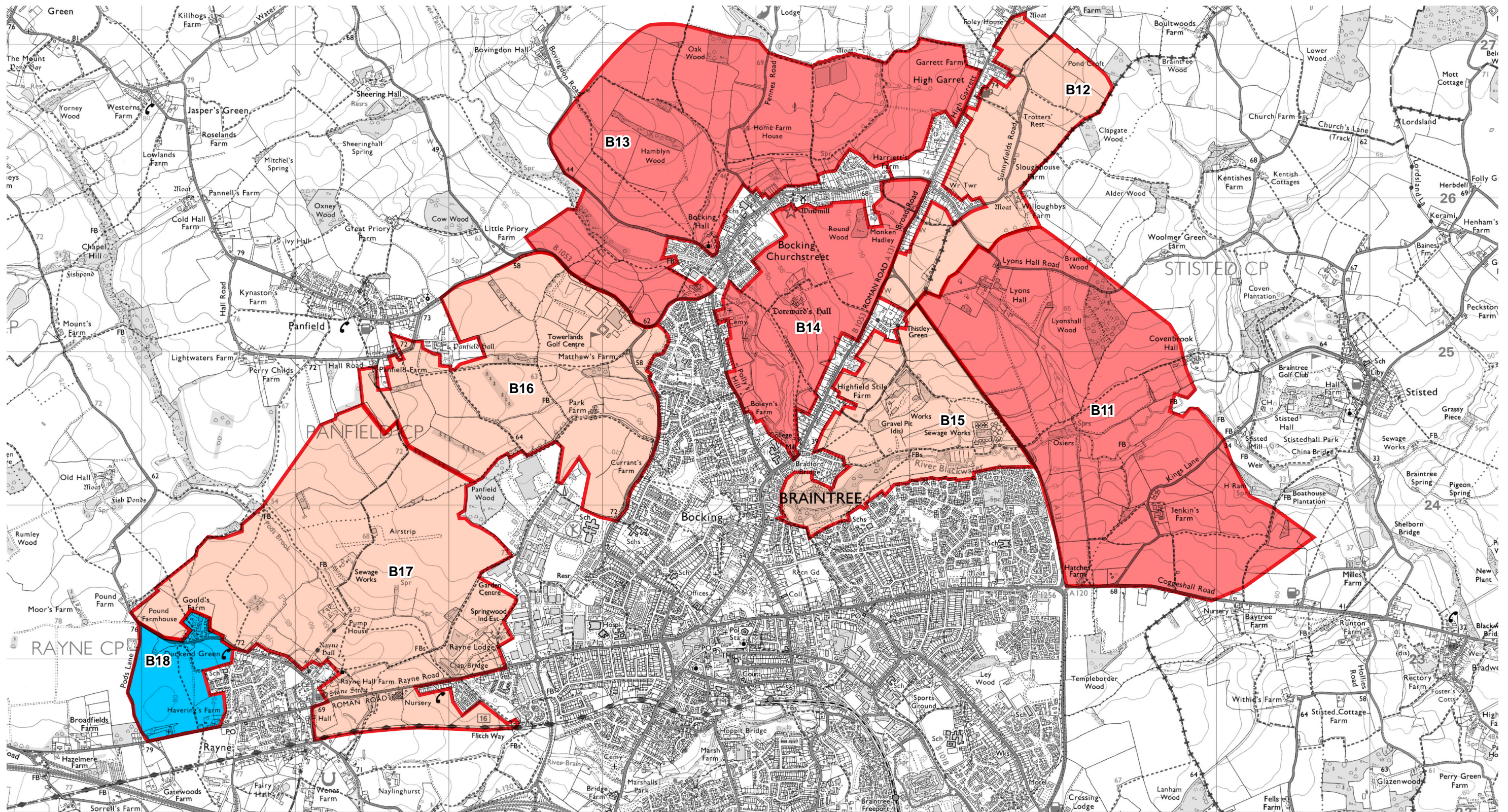
Figure B-02

Scale: 1:25,000 @ A3

May 2015



thelandscapepartnership



Reproduced from the Ordnance Survey map with the permission of the controller of Her Majesty's Stationery Office. Licence number: AL 100002205. © CROWN COPYRIGHT.

Key

- Landscape Setting Areas
- as identified in Landscape Capacity Analysis (2007) by Chris Blandford Associates

Landscape capacity:

- Low capacity
- Low - Medium capacity
- Medium capacity
- Medium - High capacity

E14887 Braintree District Settlement Fringes
Evaluation of Landscape Analysis

Braintree and Environs

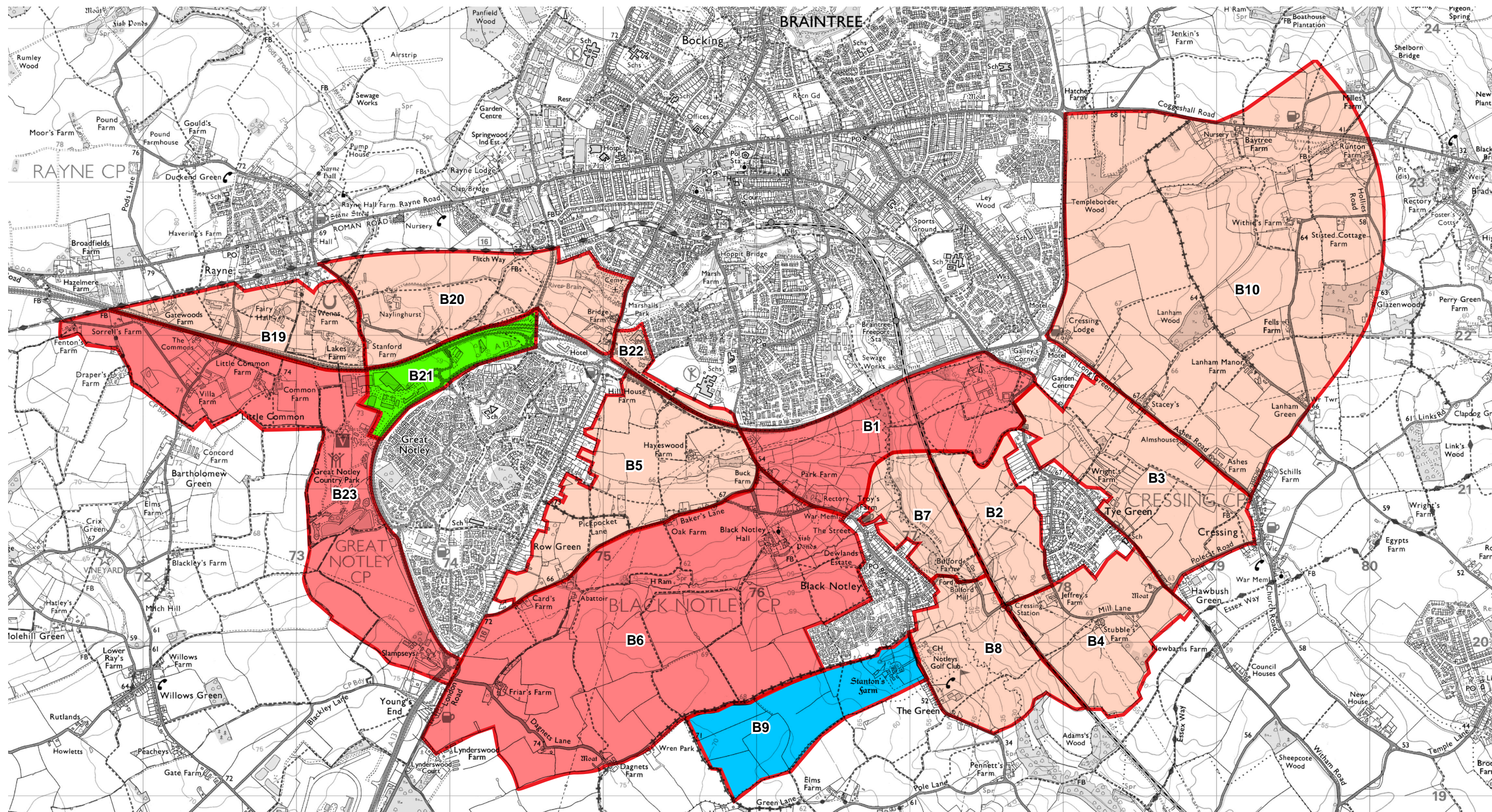
Landscape Setting Areas (11-18) Evaluation

Figure B-04
Scale: 1:25,000 @ A3

May 2015



thelandscapepartnership



Reproduced from the Ordnance Survey map with the permission of the controller of Her Majesty's Stationery Office. Licence number: AL 100002205. © CROWN COPYRIGHT.

Key

- Landscape Setting Areas
- as identified in Landscape Capacity Analysis (2007) by Chris Blandford Associates

Landscape capacity:

- Low capacity
- Low - Medium capacity
- Medium capacity
- Medium - high capacity

E14887 Braintree District Settlement Fringes
Evaluation of Landscape Analysis

Braintree and Environs
Landscape Setting Areas (1-10 & 19-23)
Evaluation

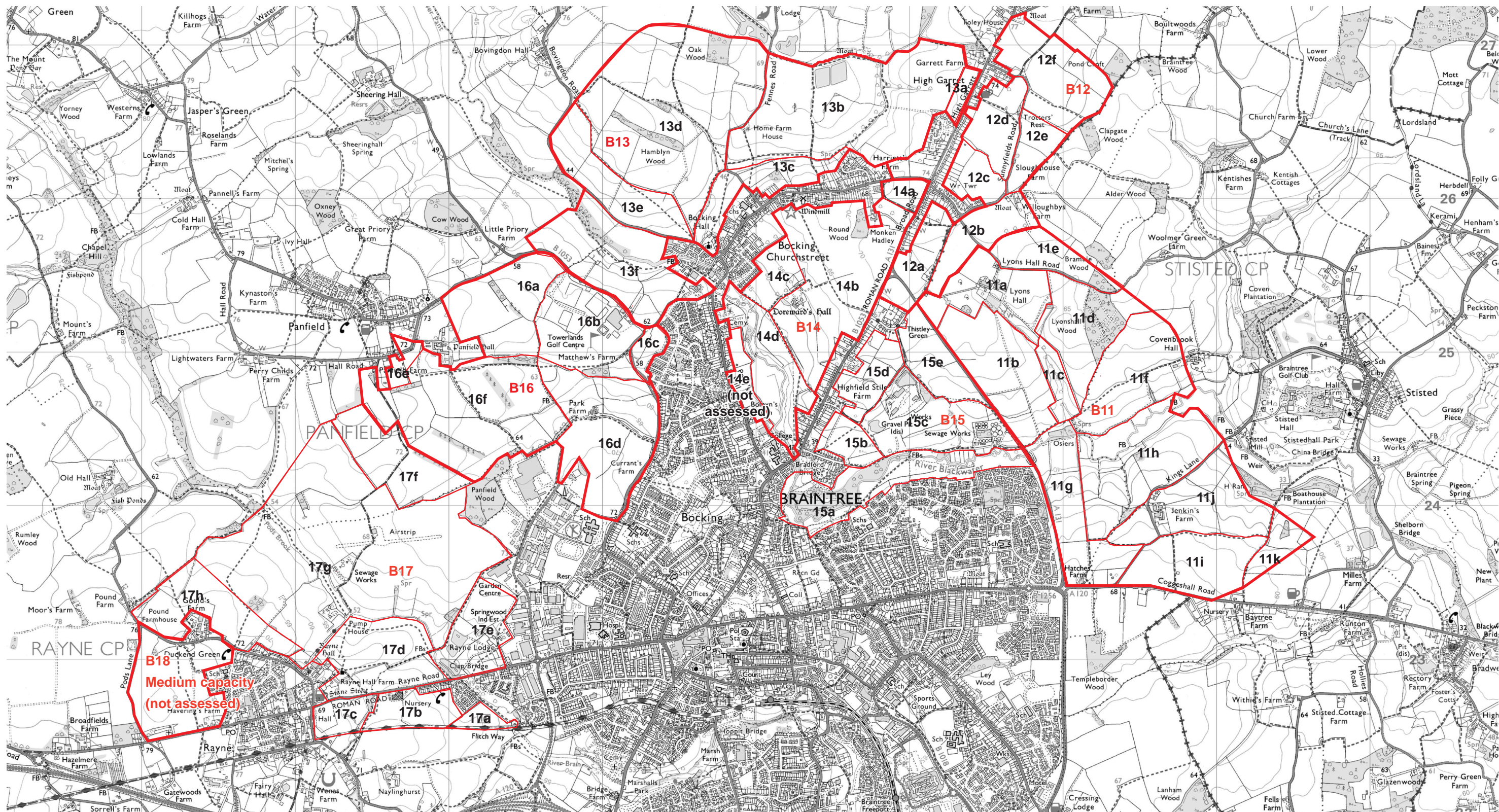
Figure B-05

Scale: 1:25,000 @ A3

May 2015

thelandscapepartnership





Reproduced from the Ordnance Survey map with the permission of the controller of Her Majesty's Stationery Office. Licence number: AL 100002205. © CROWN COPYRIGHT.

Key

- Landscape Setting Areas
- as identified in Landscape Capacity Analysis (2007) by Chris Blandford Associates

E14887 Braintree District Settlement Fringes Evaluation of Landscape Analysis

Braintree and Environs

Parcel Arrangement (11-18)

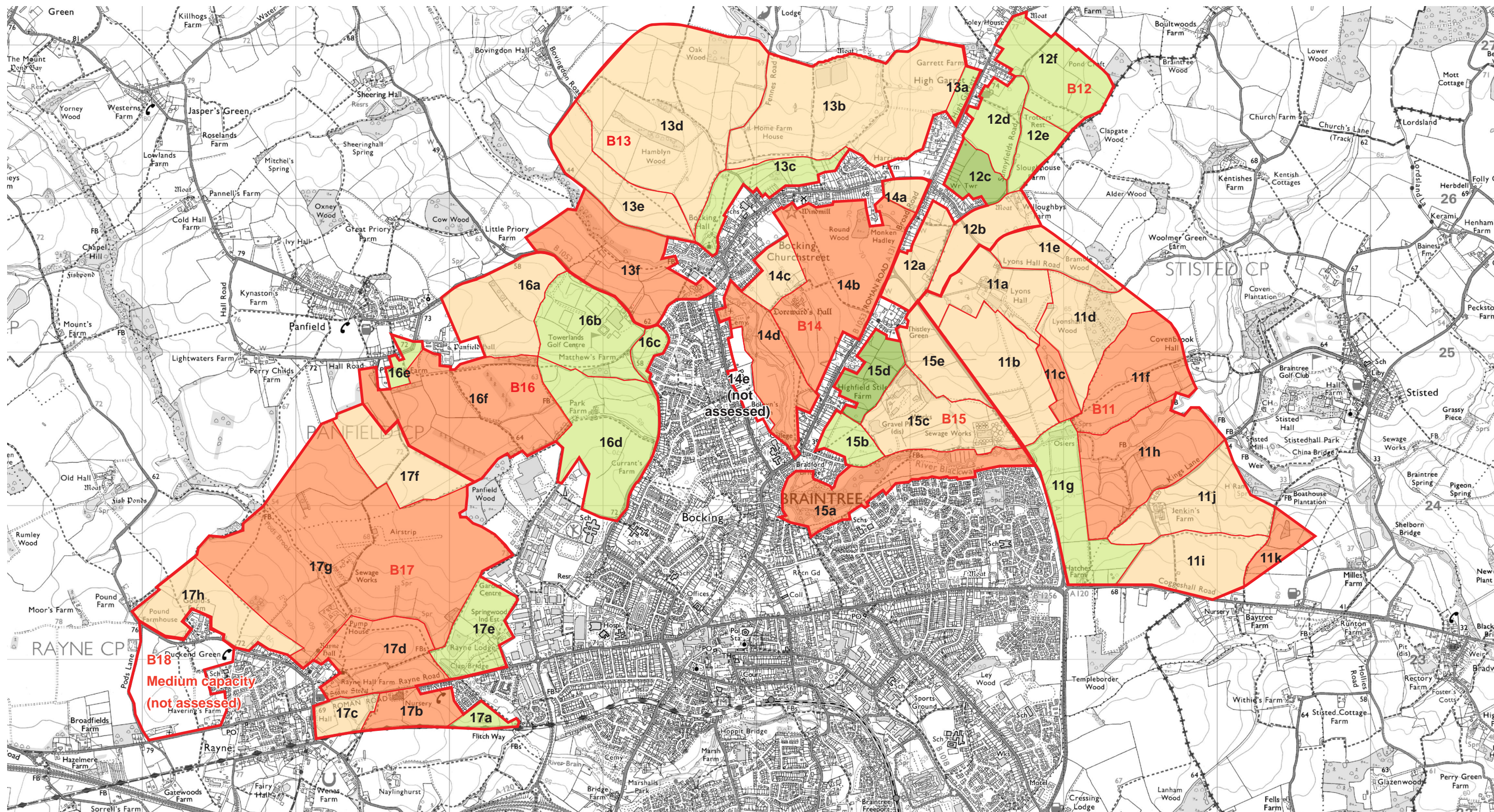
Figure B-06

Scale: 1:25,000 @ A3

May 2015



thelandscapepartnership



Reproduced from the Ordnance Survey map with the permission of the controller of Her Majesty's Stationery Office. Licence number: AL 100002205. © CROWN COPYRIGHT.

E14887 Braintree District Settlement Fringes Evaluation of Landscape Analysis

Braintree and Environs

Parcel Evaluation (11-18)

Figure B-08

Scale: 1:25,000 @ A3

May 2015

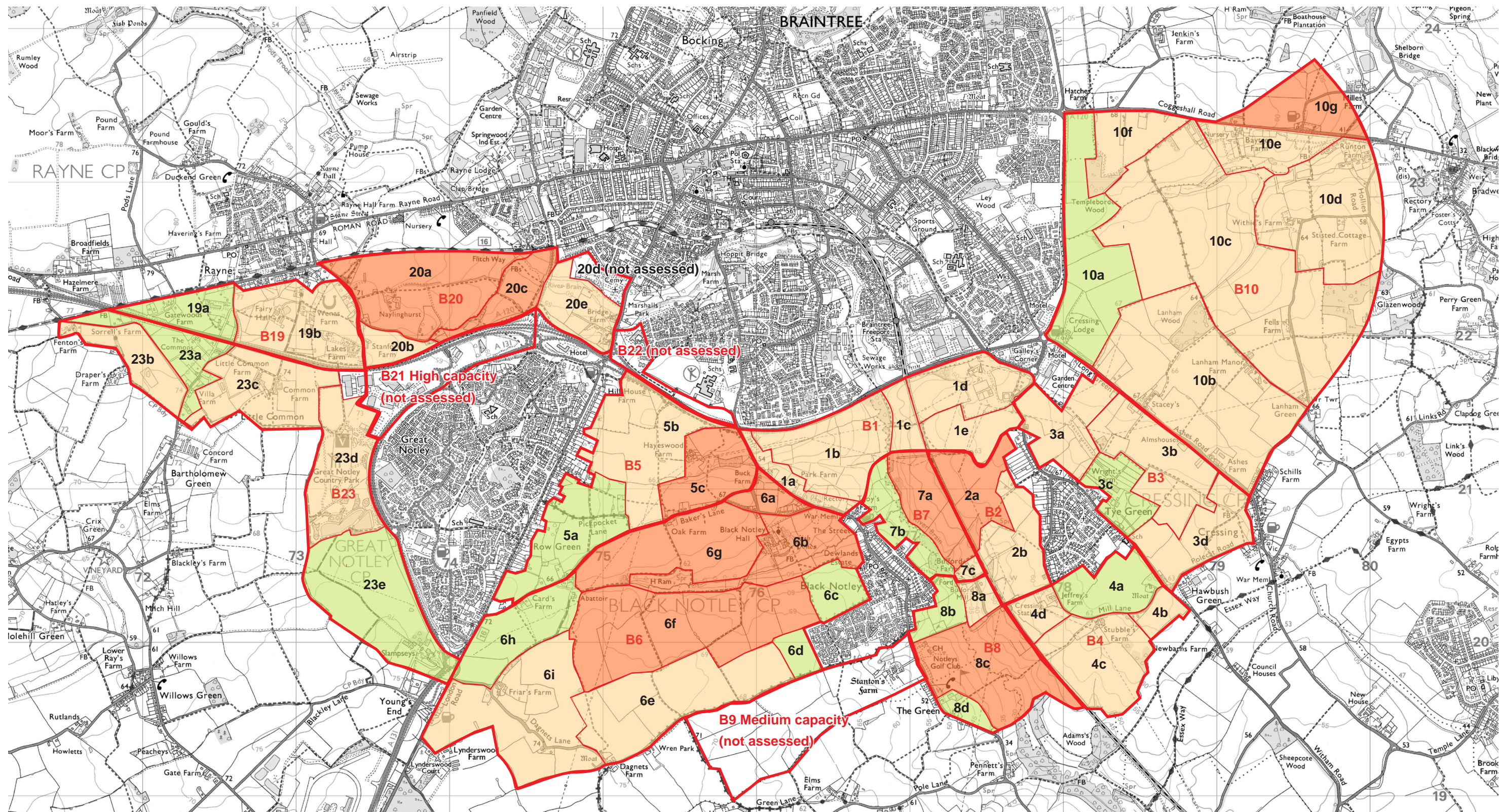


the **landscape** partnership

Key

— Landscape Setting Areas
- as identified in Landscape Capacity
Analysis (2007) by Chris Blandford
Associates

- Low Landscape Capacity
- Medium - Low Landscape Capacity
- Medium Landscape Capacity
- Medium - High Landscape Capacity
- High Landscape Capacity



Reproduced from the Ordnance Survey map with the permission of the controller of Her Majesty's Stationery Office. Licence number: AL 100002205. © CROWN COPYRIGHT.

Key

— Landscape Setting Areas
- as identified in Landscape Capacity Analysis (2007) by Chris Blandford Associates

- Low Landscape Capacity
- Medium - Low Landscape Capacity
- Medium Landscape Capacity
- Medium - High Landscape Capacity
- High Landscape Capacity

E14887 Braintree District Settlement Fringes
Evaluation of Landscape Analysis

Braintree and Environs

Parcel Evaluation (1-10 & 19-23)

Figure B-09

Scale: 1:25,000 @ A3

May 2015

the **landscape** partnership

