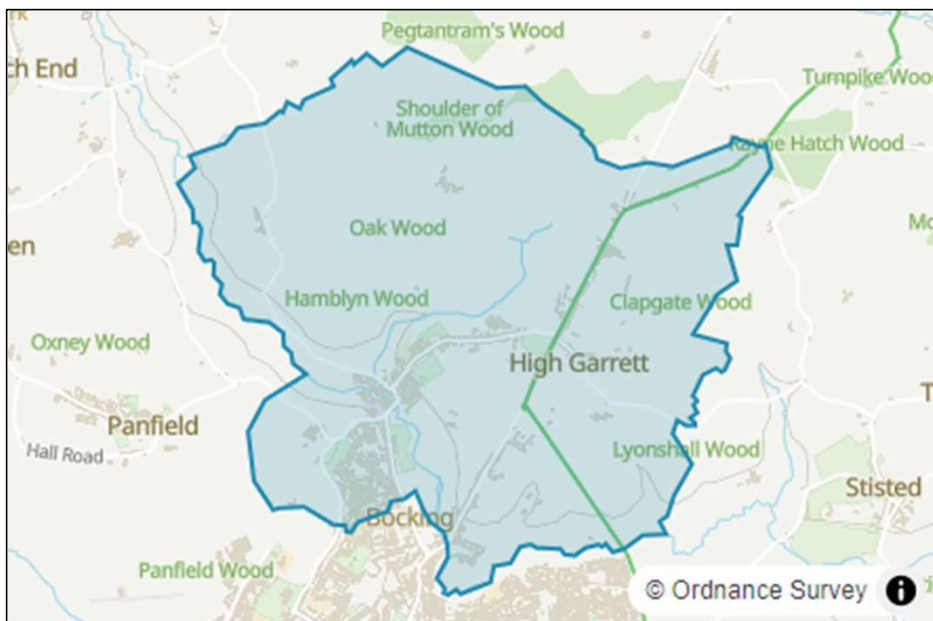


# BOCKING NORTH Ward Profile 2023



Bocking North Ward is a predominantly urban Ward located in the south of the Braintree District within the town of Braintree & Bocking.

## Bocking North

This profile explores the demographic, social and economic characteristics of Bocking North Ward and is largely based on data drawn from the 2021 Census. This profile is a snapshot, and is intended to support an understanding of Braintree District's Ward characteristics.

**Councillors:**  
David John Baugh  
Lynn Rosemary Jefferis

Contents
Population
Population Density
Diversity
Health
Housing
Education and Qualifications
Employment Activity
Deprivation

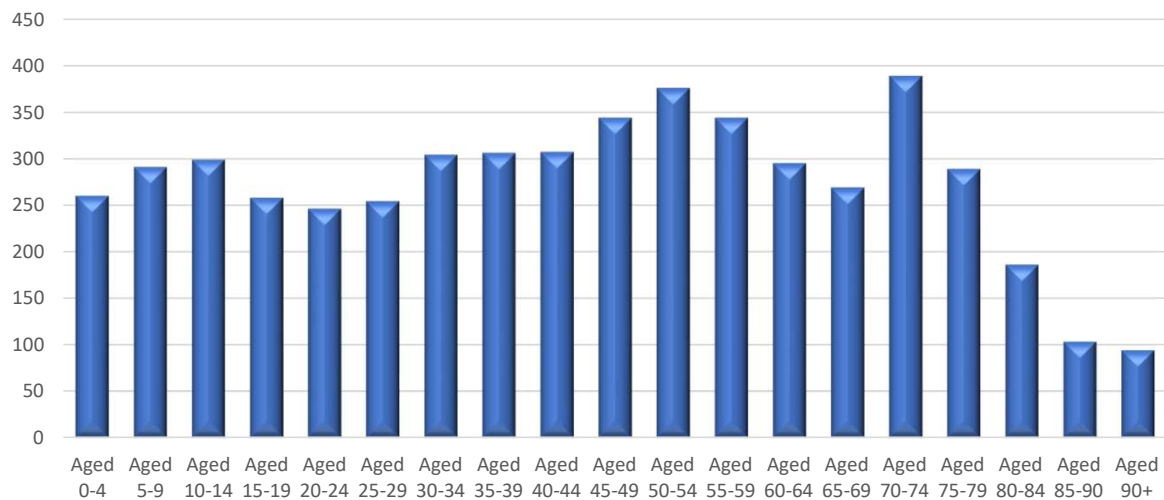
If you have any questions or comments regarding this report, please contact the Performance and Improvement Team

# Bocking North - Population

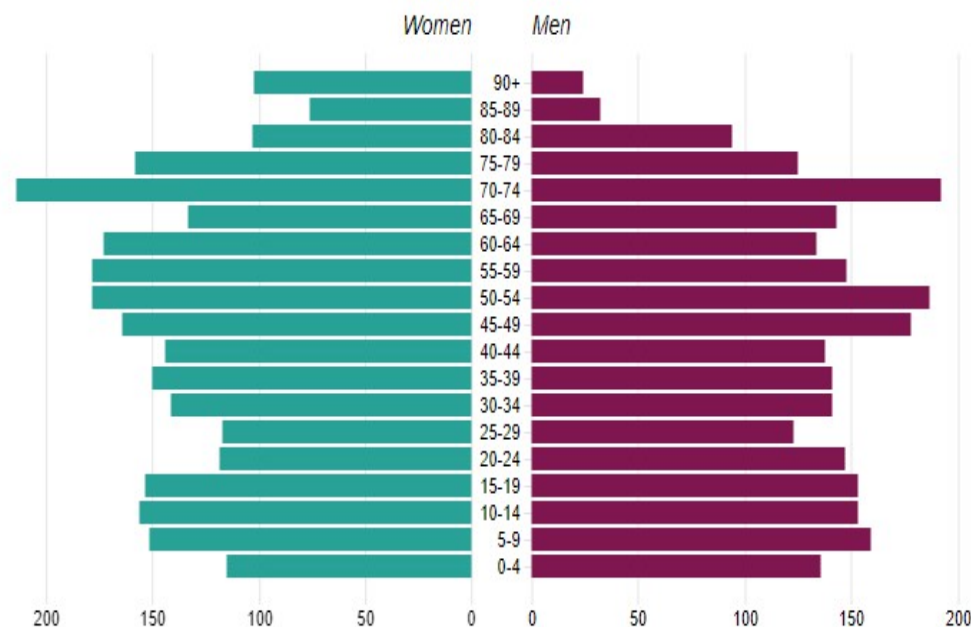


Population by Age Group (%)

Age Group	Bocking North	Braintree	Essex
Population aged 0-4 years (%)	4.8	5.5	5.7
Population aged 5 to 15 years (%)	13.3	13.6	13.3
Population aged 16 to 24 years (%)	9.3	8.8	9.5
Population aged 25 to 64 years (%)	46.2	51.5	50.9
Population aged 50 to 64 years (%)	18.9	20.8	20.1
Population aged 65 years and over (%)	26.5	20.6	20.7



Population pyramid by five year age groups and gender



Source: Office for National Statistics (ONS) Small area population estimates: mid 2020

Population  
**5,200**  
 (rounded to the nearest 100 people)

# Bocking North – Population Density

Population Density  
(number of residents per square kilometre)

**358.7**

The map on the right shows the density of Bocking North ward in comparison with other wards in the district. Bocking North has a low population density much like the majority of wards in the district.

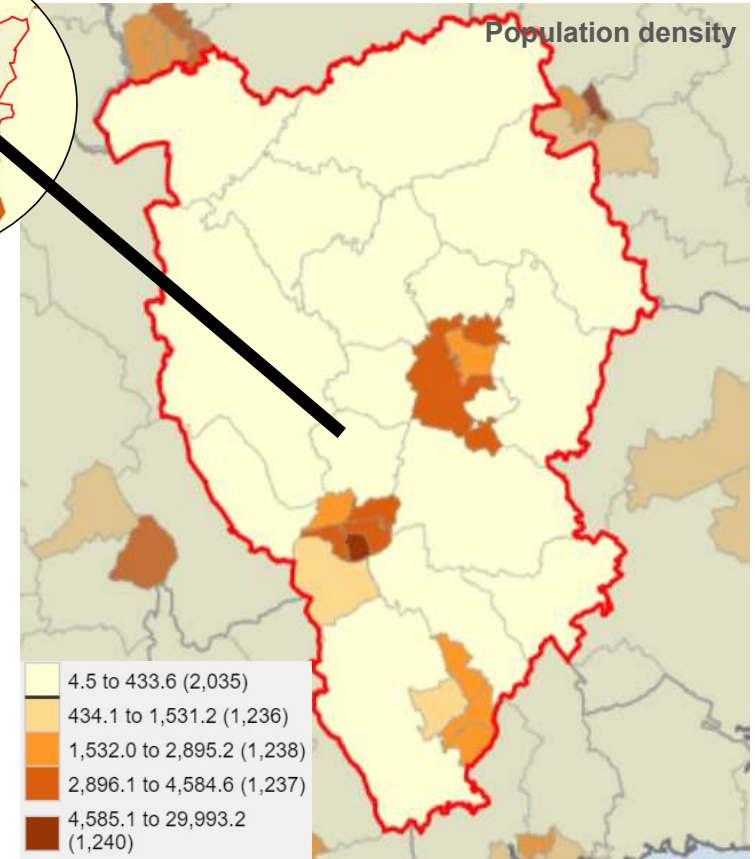
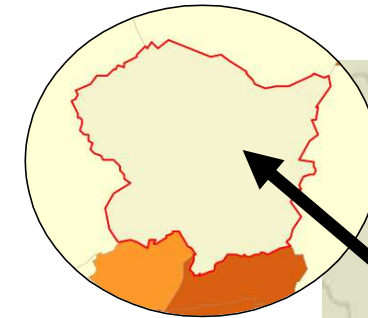
The population of Bocking North ward has not really changed since the census in 2011 whereas the population for the whole district grew by 5.5% in the same period.

The Bocking North ward resident population is 3.4% of the total Braintree District population of 155,220.

The largest age group in the ward is the 70 to 74 year olds and the proportion of males and females in the ward are 49% and 51% respectively.

## Comparison with 2011 census

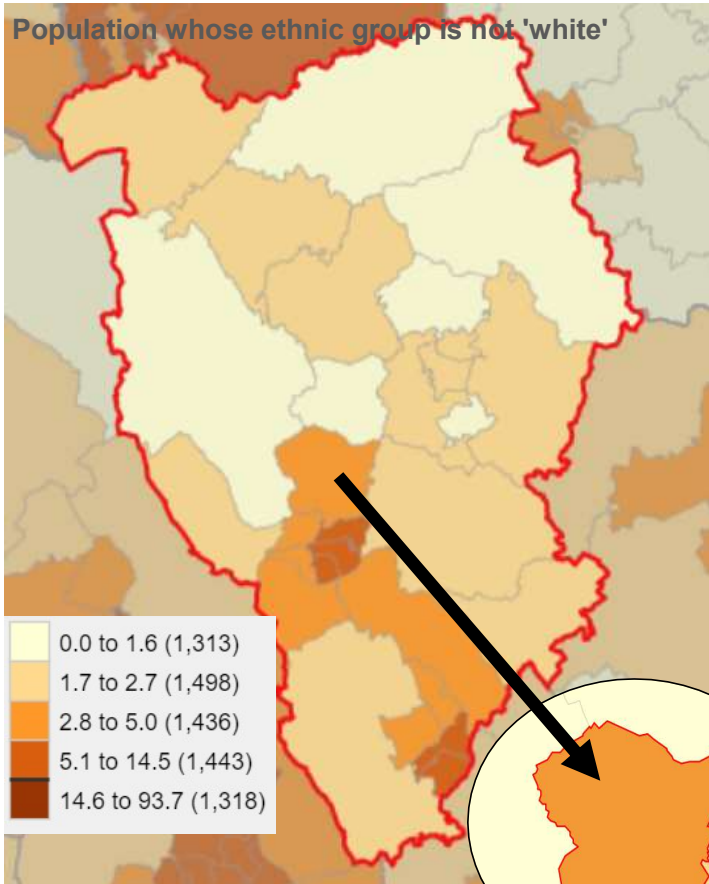
Year	Population (Census data)	Male Residents	Female Residents
2021	5,200	49%	51%
2011	5,165	49%	51%



Ward Area

**14.56**  
(sq. km)

# Bocking North - Diversity



## Ethnic Group

	Bocking North	Braintree	Essex
White British (%)	95.8	94.7	90.4
Mixed (%)	2.0	1.9	2.4
Asian or Asian British (%)	1.0	1.7	3.7
Black or Black British (%)	0.9	1.2	2.5
Other Ethnic Group (%)	0.2	0.5	1.0

## National Identity

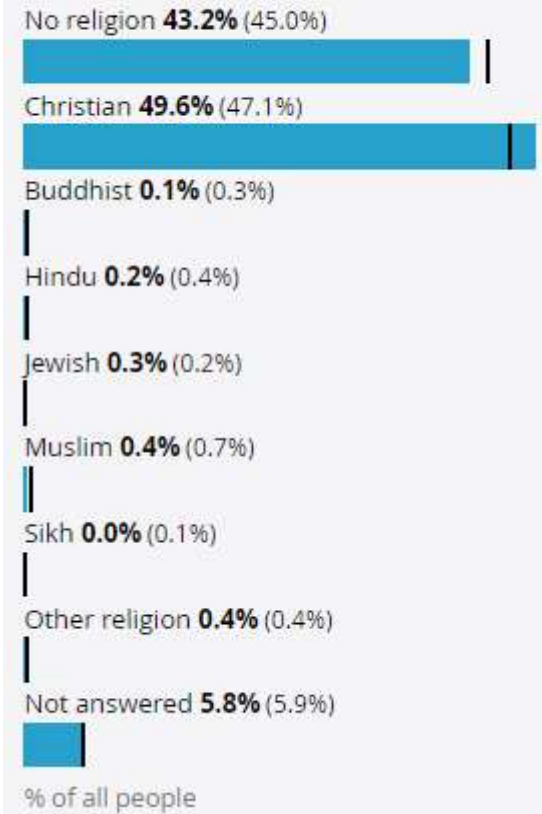
	Bocking North	Braintree	Essex
UK identity only (%)	95.8	95.0	93.1
UK identity and non-UK identity (%)	1.0	1.0	1.3
Non-UK identity only (%)	3.2	4.0	5.6

## Disability

	Bocking North	Braintree	Essex
Disabled under the Equality Act (%)	21.5	16.9	16.7
Not Disabled under the Equality Act (%)	78.5	83.1	83.3

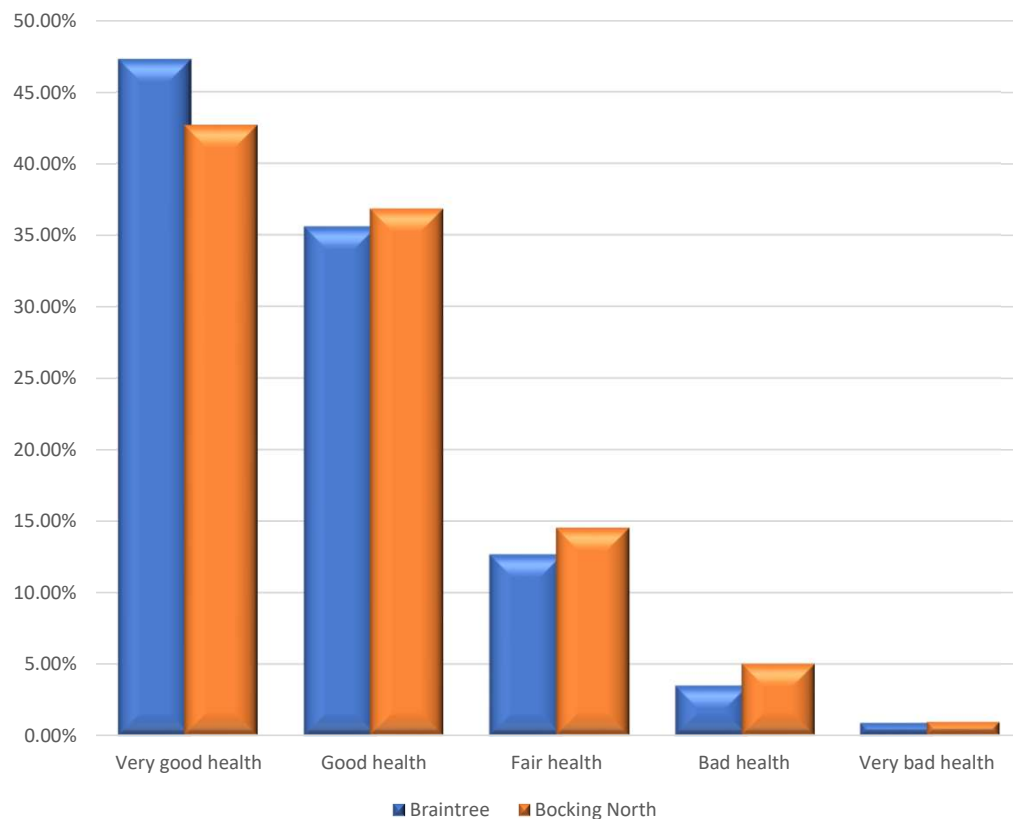
## Religion

### Bocking North (Braintree)



# Bocking North- Health

## General Health



## Life Expectancy

	Bocking North	Braintree	Essex	England
<b>Life expectancy at birth for males (years)</b>	80.6	80.1	80.2	79.5
<b>Life expectancy at birth for females (years)</b>	80.7	83.2	83.5	83.2

## Limiting long-term illness or disability

	Bocking North	Braintree	Essex
<b>Disabled under the Equality Act: Day-to-day activities limited a lot (%)</b>	9.5	6.7	6.8
<b>Disabled under the Equality Act: Day-to-day activities limited a little (%)</b>	11.9	10.3	9.9
<b>Not disabled under the Equality Act: Has long-term physical or mental health condition but day-to-day activities are not limited (%)</b>	6.6	7.8	7.1
<b>Not disabled under the Equality Act: No long-term physical or mental health conditions (%)</b>	71.9	75.3	76.2

## Provision of unpaid care

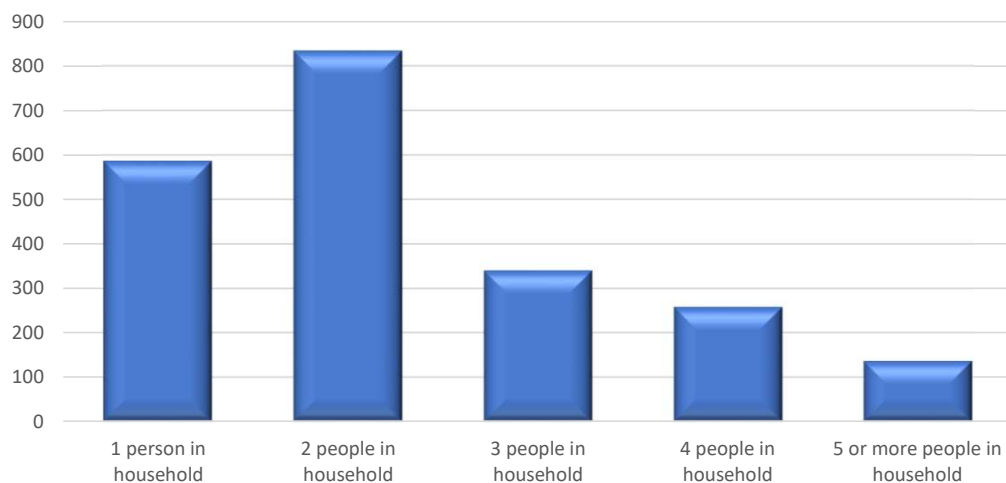
	Bocking North	Braintree	Essex
<b>Provides no unpaid care (%)</b>	91.7	91.4	91.2
<b>Provides 19 hours unpaid care a week (%)</b>	4.0	4.4	4.5
<b>Provides 20 to 49 hours unpaid care a week (%)</b>	1.7	1.6	1.6
<b>Provides 50 or more hours unpaid care a week (%)</b>	2.6	2.6	2.6

## Bocking North - Housing

There are **2,154** households in the Bocking North ward

The median house price is **£310,000**  
 (June 2022)

### Household size



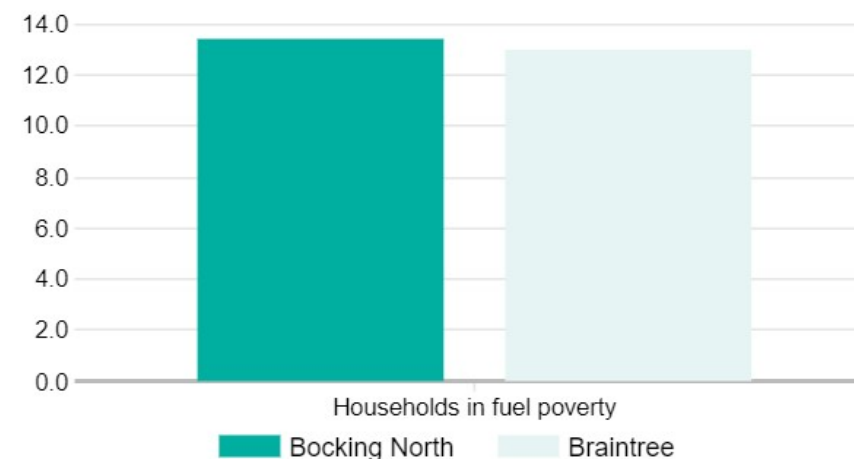
### Household composition

	Bocking North	Braintree
One person household (%)	27.4	27.4
Single family household (%)	68.1	68.1
Multiple family household (%)	4.5	4.6

### Housing Tenure

	Bocking North	Braintree
Owns outright (%)	36.9	34.3
Owns with a mortgage or loan or shared ownership (%)	31.8	34.3
Social rented (%)	19.5	16.3
Private rented or lives rent free (%)	11.8	15.1

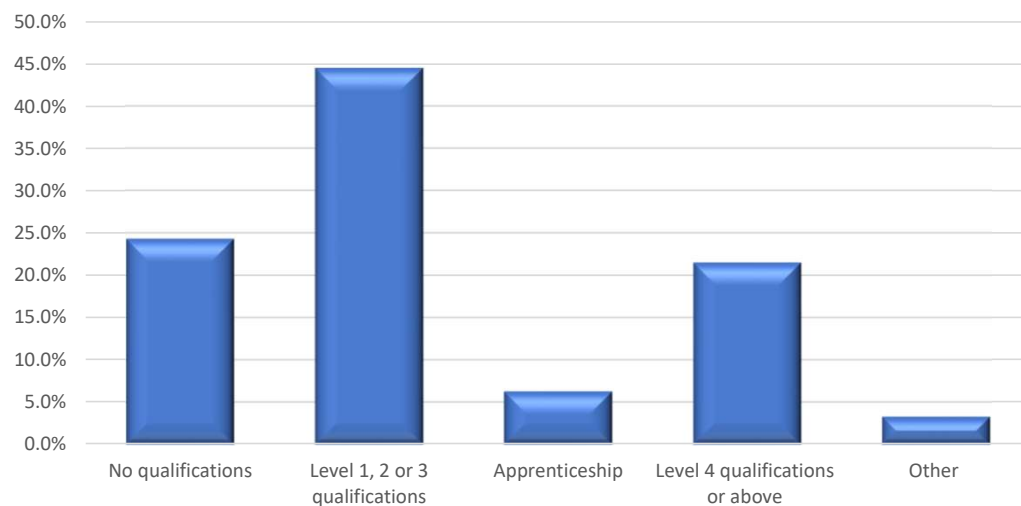
### Modelled estimates of the proportion of households in fuel poverty, %, 2020



Source: Department for Business, Energy & Industrial Strategy

# Bocking North – Education and Qualifications

## Highest level of qualification



## Highest level of qualification (comparison with Braintree and Essex)

	Bocking North	Braintree	Essex
No qualifications (%)	24.3	18.4	18.9
Level 1, 2 or 3 qualifications (%)	44.5	47.2	44.8
Apprenticeship (%)	6.3	5.9	5.6
Level 4 qualifications and above (%)	21.5	25.8	27.9
Other qualifications (%)	3.3	2.7	2.8

## Schoolchildren and full-time students

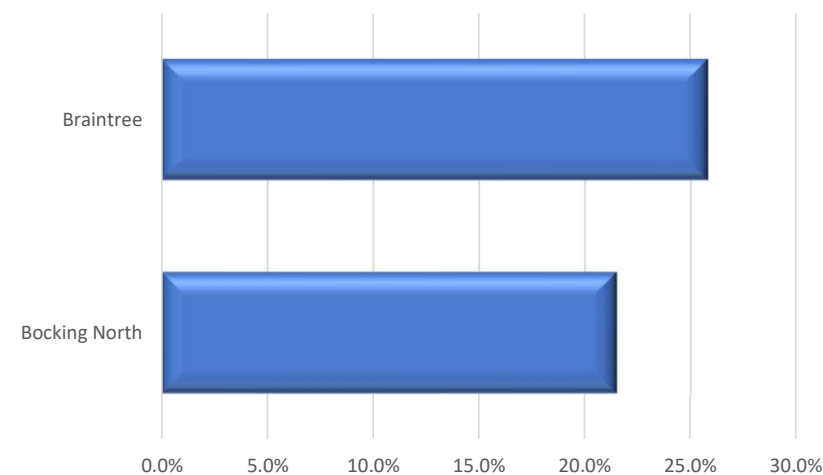
**Bocking North** (Braintree)

Student **16.6%** (17.7%)

Not a student **83.4%** (82.3%)

% of people aged five years and over

## Level 4 qualification or above





## Bocking North – Employment activity

### Economic activity status



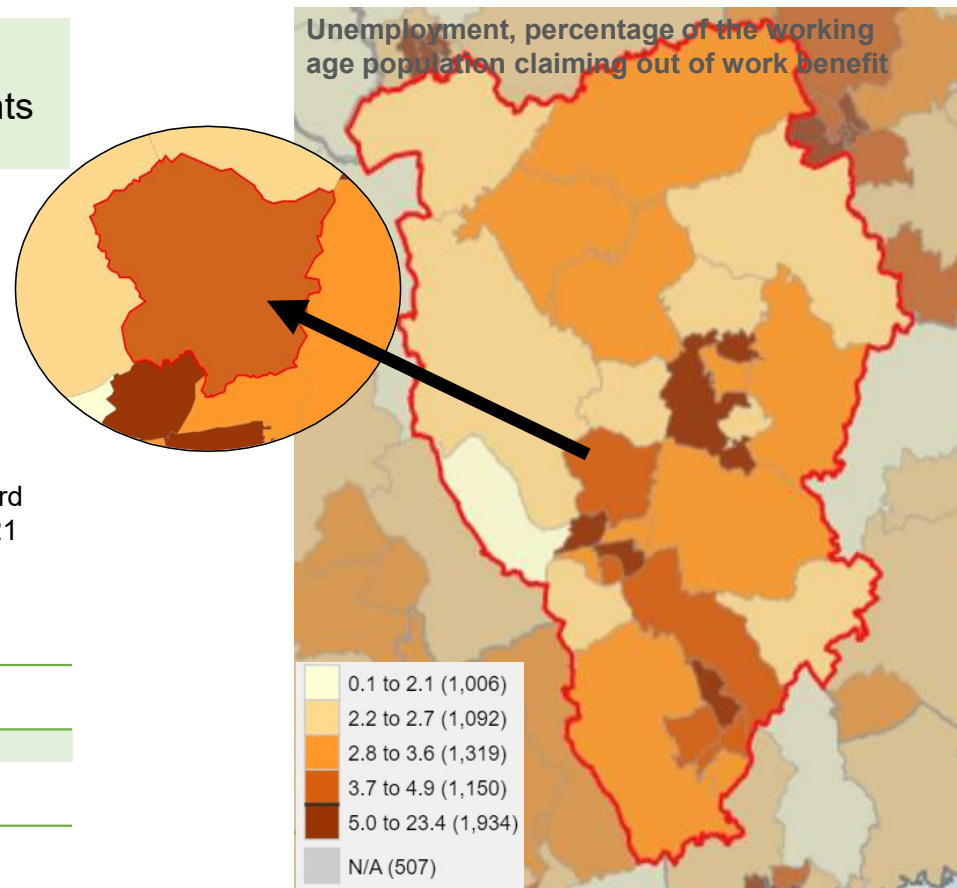
**2,395**  
 Economically active residents  
 (aged 16-64)

Bocking North ward has a lower percentage of economically active adults compared to the Braintree district with unemployment rates higher than Braintree and Essex.

The next page will look at occupational groups, hours worked and the distance ward residents travel to work taken from the 2021 census.

### Unemployment rates

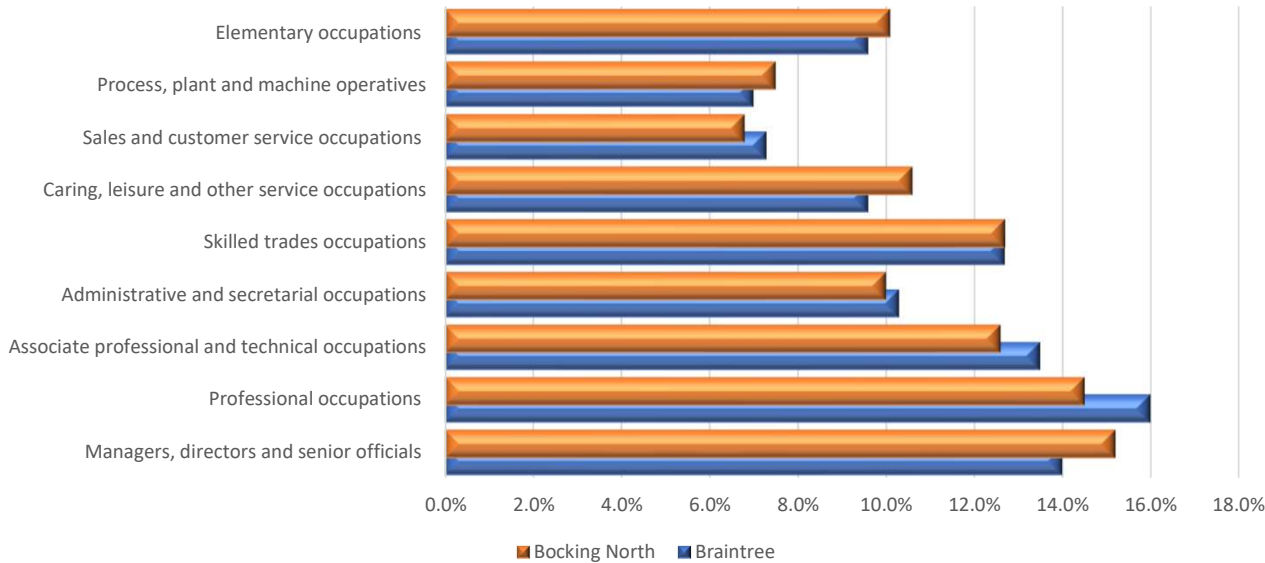
	Bocking North	Braintree	Essex
<b>Unemployment (%)</b>	4.4	3.7	4.1
<b>Long term unemployment (crude rate per 1,000 residents) (%)</b>	1.4	0.7	1.3





# Bocking North – Employment activity

## Occupational groups



## Hours per week worked

	Bocking North	Braintree	Essex
Part-time: 15 hours or less worked (%)	10.8	11.3	11.2
Part-time: 16 to 30 hours worked (%)	19.1	18.8	18.8
Full-time: 31 to 48 hours worked (%)	58.1	57.3	57.5
Full-time: 49 or more hours worked (%)	12.0	12.6	12.5

## Distance travelled to work

**Bocking North** | (Braintree)

Less than 10km **27.6%** (23.7%)

10km to less than 30km **20.6%** (21.1%)

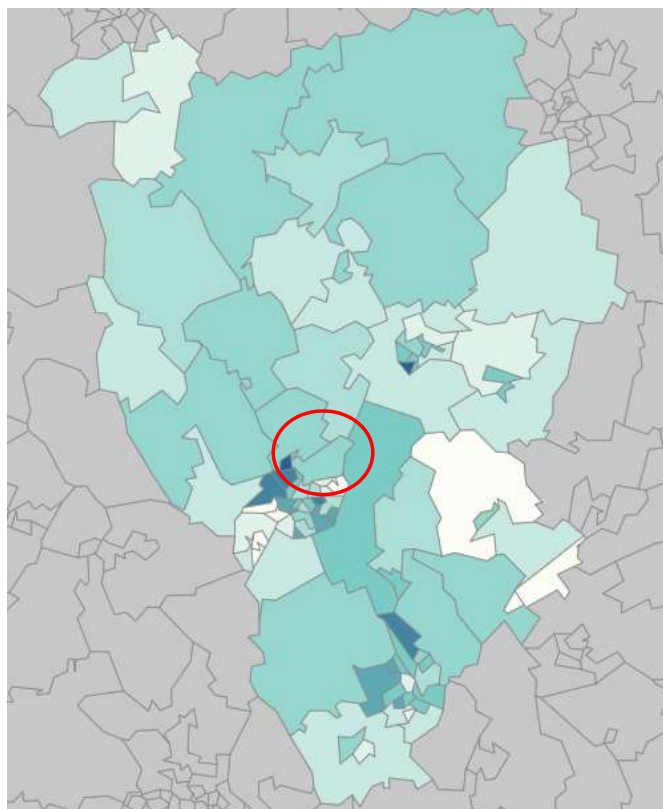
30km and over **9.3%** (8.6%)

Works mainly from home **24.4%** (28.8%)

Other **18.1%** (17.8%)

% of people aged 16 years and over in employment

## Bocking North - Deprivation



### Index of Multiple Deprivation (IMD) 2019

The map shows the spread of deprivation across the Braintree district at Lower Super Output areas. The most deprived areas are shaded blue, tend to be in the towns of Braintree, Halstead and Witham with the least deprived shaded light green or white in the more outer areas of the district.

Lower Super Output Areas (LSOAs) are small geographical units. Deprivation is measured using the Index of Multiple Deprivation (IMD) 2019. For each LSOA, a deprivation score is calculated covering a broad range of issues:

- Income
- Employment
- Health and disability
- Education and skills
- Housing and services
- Crime
- Living environment

There are wide inequalities between people living in areas of high levels of deprivation and those living in areas of low deprivation; more deprived populations generally have poorer outcomes in terms of health, education etc. All 87 LSOAs in the Braintree district are ordered by IMD score.

	Bocking North	Braintree	Essex	England
<b>Index of Multiple Deprivation (IMD) Score</b>	21.9	14.7	17.0	21.7

### Household deprivation

#### Bocking North | (Braintree)

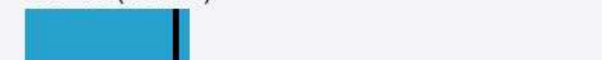
Household is not deprived in any dimension **45.7%** (50.0%)



Household is deprived in one dimension **37.0%** (34.1%)



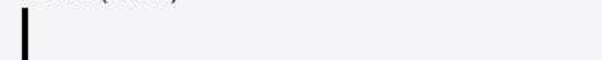
Household is deprived in two dimensions **14.2%** (13.0%)



Household is deprived in three dimensions **3.0%** (2.7%)



Household is deprived in four dimensions **0.1%** (0.1%)



% of all households

*The data and boundaries displayed in this profile are aggregated from small areas on a best-fit basis, and therefore may differ slightly from other sources*