

**Livewell:  
Are you active  
enough?**

**We're  
celebrating  
our market  
heritage**

**Investing in  
Health, Homes,  
Journeys and  
Jobs**

## **FITNESS YOUR WAY**

Try us for free – download your free pass at  
[www.fusion-lifestyle.com/offers/free-pass\\*](http://www.fusion-lifestyle.com/offers/free-pass*)

\*Terms and conditions apply

- Braintree Sport & Health Club
- Braintree Swimming & Fitness
- Halstead Leisure Centre
- Witham Leisure Centre



**TRY US  
FOR FREE**



# YOUR JOURNEY BACK TO WORK STARTS HERE

Returning to work after time out to bring up a family, being unemployed or caring for a loved one can feel scary, but HeadsUp are here to help!

We help people in Essex take positive steps towards their future through peer support, fantastic workshops and practical job seeking advice.

Why not contact us to find out more

[ENABLEEAST.ORG.UK/HEADSUP](http://enableeast.org.uk/headsUp)

[headsUp@enableeast.org.uk](mailto:headsUp@enableeast.org.uk)

[f /HeadsUpEssex](https://www.facebook.com/HeadsUpEssex)

[@HeadsUpEssex](https://twitter.com/HeadsUpEssex)

HeadsUp is funded by the European Social Fund and the National Lottery, through the Big Lottery Fund.



# JUST A FEW HOURS OF YOUR TIME CAN MAKE A WORLD OF DIFFERENCE

BECOME A COMMUNITY TRANSPORT VOLUNTEER DRIVER

[WWW.BRAINTREE.GOV.UK/COMMUNITYTRANSPORT](http://WWW.BRAINTREE.GOV.UK/COMMUNITYTRANSPORT)

CALL 01376 557883 OR EMAIL

[COMMUNITY.TRANSPORT@BRAINTREE.GOV.UK](mailto:COMMUNITY.TRANSPORT@BRAINTREE.GOV.UK)



Up to  
£9.00  
per hour

# Transform Lives as a Support Worker in Braintree

Creative Support has over 25 years of experience as a not-for-profit provider of person-centred support for vulnerable adults.

We are looking for committed, proactive and resilient Support Workers at our exciting new bespoke supported living service in Braintree for adults with complex needs.

We would love to hear from you if you have experience or you are interested in supporting people with a learning disability and/or autism to live a fulfilling life.

**Text CSESSEX to 88802 to find out more today!**

0161 237 1014

[www.creativesupport.co.uk](http://www.creativesupport.co.uk)



opportunity, choice and wellbeing



Creative Support Limited is a Registered Society under the Co-operative and Community Benefit Societies Act 2014 (Register Number 27440R). We are an equal opportunities employer.

# CONTENTS

- 04 GO GREEN** – Help us keep our district clean and green
- 06 HEALTH, HOMES, JOURNEYS AND JOBS** – Read more about our investment plans
- 08 REVIVING OUR MARKETS** – Street food markets come to Braintree and Witham
- 10 MOVE MORE** – Find out the latest Livewell work
- 12 CULTURE AND HERITAGE** – Braintree Town Hall marks its 90th year & Bocking Windmill reopens
- 14 ARE YOU PREPARED FOR AN EMERGENCY?** – Is your household prepared for flooding?
- 16 WHAT DO WE DO?** – Take a look at our district council services
- 19 HOW SATISFIED ARE YOU?** - Tell us what you think about our services

## KEEP IN TOUCH

Braintree District Council  
Causeway House, Braintree,  
Essex, CM7 9HB

Text your postcode and house number (or house name) to 07797 803 203 for service/announcement updates

[www.braintree.gov.uk](http://www.braintree.gov.uk)

[@BraintreeDC](https://www.facebook.com/BraintreeDC)

[braintreedistrictcouncil](https://www.facebook.com/braintreedistrictcouncil)

[@BraintreeDC](https://www.facebook.com/BraintreeDC)



8



12



6



10 & 11



**VIEW THE MAGAZINE ONLINE:**

[www.braintree.gov.uk/contactmag](http://www.braintree.gov.uk/contactmag)

## TELL ME MORE

Receive email updates on the things that matter to you. Subscribe to a range of topics today at [www.braintree.gov.uk/tellmemore](http://www.braintree.gov.uk/tellmemore)



Did you know you can watch our council meetings online? Visit [www.braintree.gov.uk/webcast](http://www.braintree.gov.uk/webcast)

**IF YOU NEED THIS DOCUMENT IN ANOTHER FORMAT PLEASE CALL 01376 552525**

Content correct at time of print (August 2018)



If we all make a conscious effort to recycle more and purchase less plastic, together we can say NO to a Plastic Planet

# PLASTIC PLANET

In nature now

Over the last century, plastic has become part of everyday life. From bottles and bags to plastic pots, tubs and trays, our lives are full of it.

And so is the planet. 79% of the plastic waste ever created has ended up in our environment. We're becoming a plastic planet. But we don't have to if we recycle.

## THERE IS NO PLANET B

Source: [www.recyclenow.com/plastic-planet](http://www.recyclenow.com/plastic-planet)

## MORE AND MORE PEOPLE ARE CUTTING DOWN ON SINGLE-USE PLASTIC

### USE A REUSABLE WATER BOTTLE

and take advantage of the Refill offer to provide free and easily accessible tap water for everyone, on-the-go.



### TAKE YOUR OWN CUP

and benefit from the discount and special offers many cafés and shops are running.



### PACK YOUR LUNCH IN A REUSABLE CONTAINER

and use real cutlery instead of a disposal plastic knife and fork.



### SHOP SMART

and local to purchase loose items instead of food that is wrapped in plastic packaging. Remember to take your bag for life with you.



### Clean your home with NATURAL INGREDIENTS



### Invest in a STAINLESS STEEL RAZOR



### SWAP BATHROOM BOTTLES

for refill packs and soap/shampoo bars.



### RECYCLE as much as you can.



[www.braintree.gov.uk/recycling](http://www.braintree.gov.uk/recycling)

## Got a great idea to improve your community and bring people together?

Then there's funding available to help you.

Matt Ager is passionate about doing his bit for the environment, so he founded the Cornerstone Repair Café in Black Notley to help keep tired and broken goods in service. With a team of skilled volunteers, he offers a free repair service to the community.



To help Matt's idea flourish, Cornerstone Repair Café received funding from the Councillors' Community Grant Scheme and The Essex Crowd funding scheme.



## Why not set up a repair café in your local area?

**Councillors' Community Grants Scheme** offers up to £1,500 - contact your Ward Councillor to discuss your project [www.braintree.gov.uk/councillorscommunitygrant](http://www.braintree.gov.uk/councillorscommunitygrant)



**The Essex Crowd** wants to support as many ideas as possible and can pledge up to £10,000 to do so.



Start crowd funding today and make your idea a reality! [www.spacehive.com/movement/theessexcrowd/about](http://www.spacehive.com/movement/theessexcrowd/about)

## You told us you hate litter

In our recent Customer Satisfaction Survey 2017-18, 75% of respondents said they were satisfied with the cleanliness of the district and although this has declined from the previous year, it is still 7% above the national average. You also told us keeping the district clean and tidy is important to you, however, some said they were not aware of what we do to keep it that way.

## Did you know..?

### Town centre Barrow Beats

A total of 202 litter bins are emptied 7 days a week in Braintree, Halstead & Witham. We also hand sweep doorways and other areas the mechanical sweeper cannot reach

### Play area bins

in Braintree, Halstead & Witham towns are emptied once/twice a week. That's 180 bins

### Dog & litter bins

Outside the town centres 1119 dog bins, 764 litter bins are emptied at least once a week

### A120, A12, By-Pass bins emptied

Monday/Wednesday/Friday 70 bins per day

### Main A-Roads

A131, A120, B1018 & A12 verges Litter picked every 6-8 weeks

### Grass verge cutting

In Spring & Autumn

### Town centres

& surrounding areas swept everyday

### Parish roads with kerbs are swept 4 times a year

## Refill Essex

Join the Refill revolution and fill up your reuseable water bottles for free, at cafés, bars, restaurants and other businesses across Essex.

Businesses are being encouraged to sign up to the free Refill app, and display a sticker in their window to show passers-by that they are welcome to fill up their bottles for free. The Refill app also lets you know where your nearest Refill station is while you are on the move.

Over 38.5 million plastic bottles used in the UK every day.

15 million plastic bottles are landfilled, incinerated, or littered every day.

### There are money-saving benefits for you too



A half-litre bottle of still water typically costs around 50p in shops

the equivalent volume of tap water costs a twelfth of a penny



To find out more, sign up and download the app [www.refill.org.uk](http://www.refill.org.uk)



## Health, Homes, Journeys and Jobs...

Braintree District Council is investing in the district

Like all councils we have faced the toughest of financial challenges as Central Government funding of council services whittles away to nothing by 2020. We've had to change so that we can continue to provide the frontline services which residents rely on. The amount we raise in council tax doesn't cover the costs of all the services we provide (take a look on page 16) so we've embarked on an investment programme which will see us investing in the things that matter to our residents: health and homes, journeys and jobs.

Our investments are designed to make life better for our residents, improve the district while at the same time giving us a return on investment that can be ploughed into our frontline services. All of our investments are carefully managed and painstakingly planned.

Current investments include the Manor Street regeneration (see below) in Braintree which, if approved at the planning stage, will consist of a hotel,

new homes built for a mix of private and affordable sales, a new modern bus interchange, new two-level car parking, a café or restaurant, a garden to complement Braintree's historic Town Hall and provide the perfect backdrop for the potential new café or restaurant. Excitingly, the development will also be home to the county's first Livewell Hub designed to make it easier for different parts of the NHS and community-based services to work in a truly integrated way. Mid Essex Clinical Commissioning Group has announced that the hub will bring better-coordinated care to the people who need it the most and improve the quality of health and care services for everyone living in Braintree and beyond.

Last year we invested in a new building for Church Lane Surgery in Braintree and we're looking to invest in new healthcare premises in Sible Hedingham. We're also working with the NHS and doctors on new healthcare facilities in Witham.

We want more jobs and opportunities for everyone who lives and works in our district and we will do this by supporting local businesses. That's why we are investing in the Great Notley Employment Site, the grow-on units and extra parking at the Braintree Enterprise Centre and a rural business hub in Sible Hedingham called Osier House. We are also bidding to be part of a project called I-Construct that, if successful, will create a centre of excellence for construction innovation (see image below) and support business growth across the South East. We're also looking to invest in a Witham Enterprise Centre.



Getting around the district is important and that's why we are investing, alongside Essex County Council, in the A12 Millennium Way slip roads to help relieve congestion at Galleys Corner in Braintree. Find out more: [www.essex.gov.uk/a12millenniumway](http://www.essex.gov.uk/a12millenniumway)

As part of our investment strategy, we will continue to look for sound investments across the district.

### Commercial property

We own and manage a range of business start-up units, grow-on units and other commercial properties - all at competitive rates. We can also offer conference facilities. Visit [www.braintree.gov.uk/commercialproperties](http://www.braintree.gov.uk/commercialproperties) or call Asset Management on **01376 552525**.



Osier House, Sible Hedingham.



Braintree Enterprise Centre.

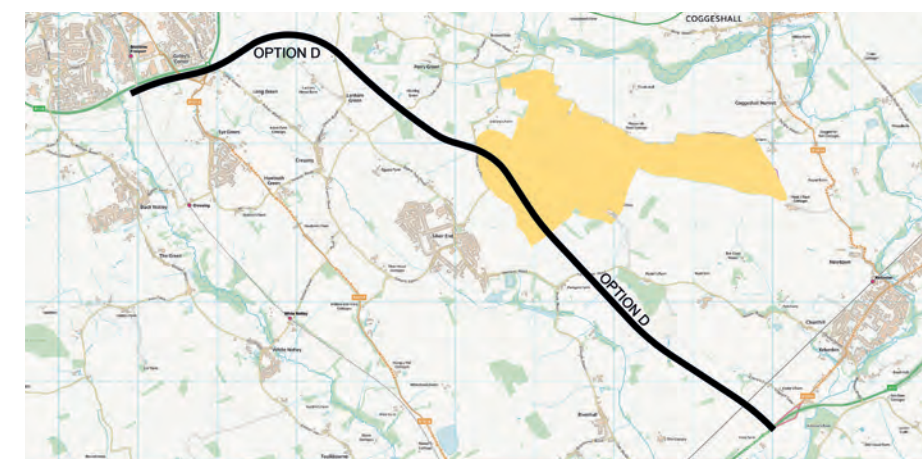
### Braintree District is well connected for high speed growth

We are investing in superfast broadband infrastructure across the district. We have agreed to invest an additional £356,000 to reach up to 99% of the district, with focus on rural areas, making the Braintree district one of the most future-proofed and digitally connected areas in Essex for residents and businesses with download speeds of more than 30Mbps.

To check your superfast broadband availability, visit the Superfast Essex website at [www.superfastessex.org/maps](http://www.superfastessex.org/maps)



### Option D is Essex County Council's favoured route option for a new dual carriageway A120 between Braintree and the A12



The favoured route, which was announced in June 2018, will be recommended to Highways England and the Department for Transport for funding in the Road Investment Strategy 2, which is the next funding period for the strategic road network.

Option D's alignment, if progressed by Highways England, would run from Galleys Corner at Braintree to a junction with the A12 to the south of Kelvedon.

It offers more than £1 billion in economic benefits to road users and up to 15-minute journey time savings between Braintree and Colchester during the rush hour.

Provided that the scheme progresses as planned, it is anticipated that construction could commence in 2023 with the road ready for use around 2026.

Find out more: [a120essex.co.uk](http://a120essex.co.uk)

View from Victoria Street in Braintree showing the hotel and giving a glimpse of the bus interchange.





# VISIT BRAINTREE STREET MARKET

Bringing together the best of a traditional market and a modern twist, discover the range of fantastic food and quality drinks on offer in the heart of Braintree town centre. Alongside sweet and savoury treats, unique gifts and homeware, the market diversity is ever growing and is guaranteed to bring a buzzing atmosphere.

You can almost travel the world in the food court from traditional Transylvanian cakes to Mexican inspired street food.

[www.braintree.gov.uk/braintreestreetmarket](http://www.braintree.gov.uk/braintreestreetmarket)  
 [BraintreeStreetMarket](https://www.instagram.com/BraintreeStreetMarket)



## BRAINTREE STREET MARKET

### BRAINTREE

#### 2018 DATES

Open from morning until mid-afternoon in Braintree Town Centre

Saturday 29th September 2018  
 Saturday 27th October 2018  
 Saturday 17th November 2018  
\*Christmas light switch on special\*  
 Saturday 1st December 2018  
 Saturday 22nd December 2018

#### 2019 DATES

We will be continuing monthly street markets into 2019 from March-December. Keep an eye out on our webpage for the confirmed dates.

[www.braintree.gov.uk/braintreestreetmarket](http://www.braintree.gov.uk/braintreestreetmarket)

### WITHAM

We have just trailed our first street market in Witham on Saturday 8th September. Based on its success, we will look into securing regular events in 2019. Get updates at [www.braintree.gov.uk/withamstreetmarket](http://www.braintree.gov.uk/withamstreetmarket)

### DID YOU KNOW...

Card and contactless card payments are now available in all our Council-owned car parks. View the list of our car parks on our website: [www.braintree.gov.uk/carparks](http://www.braintree.gov.uk/carparks)

## PLANNING for the future



Since 2014, we have been working on a Local Plan which gives the community a say on where future homes should be built.

Having a Local Plan gives us more power to stop inappropriate development.

The plan has been through many different stages and consultations and is made up of two parts. The first, section 1, deals with cross boundary strategic issues including the garden communities and section 2 relates to the Braintree District area specifically.

In October 2017 we submitted our plan to the Planning Inspector and he held a number of public hearings on section 1 in January and May 2018.

In June 2018 we heard back from the Planning Inspector who commended us for our ambitions for high-quality, strategic-scale development in North Essex, but he asked for more evidence to support the transport, viability and sustainability of the garden communities.

Discussions have already begun with Government about how its major infrastructure plans can be more directly linked up with garden communities to provide the reassurance sought by the Planning Inspector. We will continue to work with our partners to develop the evidence to support the proposed garden communities.

Graham Butland, Leader of Braintree District Council, said:

*"A new approach is needed if we are to meet the needs of future generations. I have spoken in the past about the rise of a hidden homeless generation living across North Essex and that is why the Garden Community approach is so critical. More and more people aged 18-30s are now living in their parents' homes and that is something that should make us all sit up and take notice. The alternative to Garden Communities is tagging homes on to towns and villages and that really isn't an option we want to pursue because we want to protect existing towns and villages from urban sprawl."*

Find out more visit: [www.braintree.gov.uk/planningpolicy](http://www.braintree.gov.uk/planningpolicy)

## A revolutionary approach to creating communities

Earlier this year the Planning Inspector reported back to North Essex Councils on their proposals for three new garden communities to help meet long term housing needs. His message was clear, more work to do.

Work is underway and a lot has been achieved since the 'Examination' in January. We fully recognise there is much more to do – our garden community proposals go far beyond the traditional boundaries of a Local Plan, and we are working closely with our many partners to answer some of the important questions raised by the Inspector. NEGC Ltd, the company set up to oversee the delivery of the three communities, are supporting Braintree District Council and our partners as we take this forward, looking to create the best possible proposition for residents now and in the future.

Residents need to be at the centre of the proposals, they must be able to give their view and help to shape the communities as they develop. You can give your views by contacting the NEGC team at [NEGC@communitycomms.co.uk](mailto:NEGC@communitycomms.co.uk) or by calling 0800 093 1678.

For more information about North Essex Garden Communities visit [www.ne-gc.co.uk](http://www.ne-gc.co.uk)

North Essex Garden Communities 



# Are you active enough?

Are you one of the 76% of residents in the Braintree District who are not doing enough exercise to benefit your health?



## Moderate aerobic activity

BRISK WALKING



WATER AEROBICS



RIDING A BIKE



PUSHING A LAWN MOWER



HIKING



BADMINTON



ROLLER SKATING



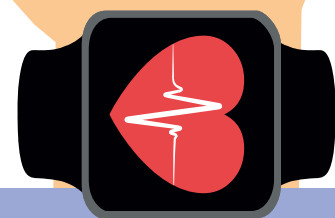
NETBALL



BASKETBALL



Everyone benefits from being active for their physical and mental wellbeing



Government guidelines recommend  
**1½ hours** of moderate aerobic activity per week  
or  
**1¼ hours** of vigorous aerobic activity, or a combination of the two

## Vigorous aerobic activity



JOGGING OR RUNNING



SWIMMING



RIDING A BIKE FAST



SINGLES TENNIS/ SQUASH



FOOTBALL



RUGBY



SKIPPING



HOCKEY



AEROBICS



GYMNASTICS



MARTIAL ARTS

**Children need to be active for 60 minutes a day to stay healthy.** Most children are active for at least 30 minutes while they are at school. Other activities include walking or cycling to school, playing in the park or organised activities.

One in five deaths of the district's 40-79 year olds are preventable. Look after your health and **move more.**

Visit [livewellcampaign.co.uk](http://livewellcampaign.co.uk) for activities near you



## A dementia friendly swimming initiative

is getting people with dementia back in the pool.

Jake Turner, who works for Sport for Confidence, is based at Witham Leisure Centre two days a week. His aim is to make sure that people with dementia, mental ill health, autism, learning disabilities or complex needs can have easy access to sports.

Eight months ago, Jake started dementia friendly swimming sessions taking place between 1pm and 2pm every Thursday

in the leisure pool at the centre in Spinks Lane, Witham. The pool is hired out exclusively which means that people with dementia can enjoy a relaxed swim at a quiet time with help on hand.

The pool is fully accessible with a pool pod and a movable floor. The session costs £2.60 with no extra cost for carers.

Jake said:

*“ This makes a real difference to people and it's extremely rewarding. Recently a gentleman with dementia came to our dementia friendly swimming session with his wife, son and grandson. What is better than seeing three generations swimming together who otherwise wouldn't have felt confident doing so? ”*

If you are interested in any of the support Sport for Confidence can offer you or a loved one, please contact Jake on [jake@sportforconfidence.com](mailto:jake@sportforconfidence.com) or contact Witham Leisure Centre on **0345 260 1535.**



**livewell**

Your local guide to health and wellbeing in Essex



Advice for families



Local Activities



Ageing Well



Nutrition & Weight Management



Mental Wellbeing



Your Health

[www.livewellcampaign.co.uk](http://www.livewellcampaign.co.uk)

Follow us on:



Livewell campaign



@LivewellLocal



@LivewellCampaign

## Livewellchild



Livewell Child is a three year pilot project aiming to support families and their children to eat well and move more. Braintree District Council is working with ten schools in the district to provide initiatives to help children make healthy choices.

So far the children have been offered free fruit and veg, slow cookers, cooking clubs, the Daily Mile and information booklets providing advice about health, as well as a range of healthy campaigns. If you would like to be involved in Livewell Child either as a Livewell Champion; being an ambassador for health & well-being or by offering your skills and talents to help children live better, or whether you are a local business and can support individual schools please email [livewell@braintree.gov.uk](mailto:livewell@braintree.gov.uk)

You can read about the campaigns so far at [www.livewell.co.uk/livewell-child](http://www.livewell.co.uk/livewell-child)





## Celebrating 90 years...

In May 2018 local dignitaries and 21 local residents who share their 90th birthday with Braintree Town Hall came together to celebrate 90 years since the building's official opening.

The foundation stone was laid in October 1926 by George Bartram and the town hall was officially opened on 22 May 1928 watched by a crowd of five thousand.

The town hall was gifted to the town by William Julien Courtauld, his great nephew Julien Courtauld spoke at the celebration event and said that the town hall had cost £50,000 to build.

He said: "The town hall has given the centre of Braintree an authority and air of permanence since it was built and still does."

"The site on which the town hall was built was the site of the old Livestock market, at the junction of Manor Street and Fairfield Road. Although he could have gone to his brother Jack for an architect he chose instead, Vincent Harris, who at that stage in his career had yet to produce his finest work, and was basically a classicist in style."

Julien also gave the audience a run through of the meaning behind the murals which surround the tops of each room in the town hall depicting images of the Roman occupation of Braintree among many others.

**For weddings, room hire, events and much more visit [www.braintreetownhall.co.uk](http://www.braintreetownhall.co.uk)**

Telephone: 01376 557776  
Email: [thc@braintree.gov.uk](mailto:thc@braintree.gov.uk)  
[www.braintreetownhall.co.uk](http://www.braintreetownhall.co.uk)

[f](#) Braintree Town Hall [t](#) @braintreethall



## Royal visit to the district



The Braintree District had a Royal visit this year. In July HRH Prince Edward, the Earl of Wessex, visited Prested Hall in Feering as part of the Duke of Edinburgh Awards Scheme Tennis Challenge which will see him playing on every Real Tennis court in the world - to raise funds to enable more young people to start their Duke of Edinburgh both in the UK and abroad. Find out more: [prested.co.uk](http://prested.co.uk)

To find out more about Real Tennis or to give it a go contact [rt@prested.net](mailto:rt@prested.net)

# VOTES for WOMEN

2018 marks *100 years* since the introduction of the Representation of People Act. After decades of campaigning all men over the age of 21 and women over 30 who owned property were given the right to vote in parliamentary elections.

BY CLAIRE WILLETTS, COLLECTIONS AND EXHIBITIONS CURATOR

Over ten years ago, working for another museum, I was inspired and have never forgotten the words of our then local female MP. We were opening a display about a local suffragette and she spoke about the importance of exercising our right to vote, as those who had fought for this right sacrificed a great deal and by not voting we would be forgetting the courageous campaign they fought. A hundred years later it seems incredible that women were unable to vote, yet the stories of many of our suffragettes have been forgotten.

In the Braintree District, the Courtauld family is a well-known name, but little is known about the influential role both male and female family members played in the suffrage movement. The family's support for wider enfranchisement was not militant, but they used their power and position to help bring about change. Several members of the family signed the 1866 petition for the Enfranchisement of Women. Samuel Courtauld was one of three founding male shareholders for the English Woman's Journal and a member of Manchester Women's Suffrage. In the following generation, two Courtauld ladies were involved in the movement – Katherine Mina Courtauld and Catherine Courtauld.

Katherine Mina Courtauld was the daughter of George Courtauld III, owner of Halstead Mill. She was Secretary of the North West Essex branch of National Union of Women's Suffrage Society. Her family's wealth afforded Katherine independence and influence. She was given Knight's Farm in Colne Engaine and from the 1891 census onwards her occupation was recorded as a 'farmer'. In the 1911 census Katherine was hosting Alice Geraldine Cooke, a Women's Suffrage Organiser with the National Union Woman's Suffrage Society. At the bottom of the page in red, Katherine wrote:

*"As a householder & ratepayer I deeply resent being denied the privilege of a citizen in the exercise of the parliamentary franchise."*



Katherine Courtauld (left) with Mary Gladstone  
Photo given with kind permission by George Courtauld.

Catherine Courtauld, the youngest child of Sydney and Sarah Lucy Courtauld, and sister to William Julien Courtauld, Samuel Courtauld (who established the Courtauld Institute of Art) and Stephen Courtauld (Eltham Palace) was an artist. She used her skills to support the movement by designing several suffrage posters for publication including 'The Anti-Suffrage Ostrich' c.1909, 'The Anti-Suffrage Society as Portrait Painter' c.1912, 'The Anti-Suffrage Society as Prophet', c.1912, and 'Waiting for a Living Wage' c.1913. These posters are held in the Museum of London today.

The stories of these two ladies have certainly been forgotten. How many other women in the District were involved and their stories untold?

Braintree Museum is looking to find out more information about suffragettes who lived in our District, please do get in touch if you can help.

**Claire Willetts** Collections and Exhibitions Curator  
Braintree District Museum **01376328868**  
[claire.willetts@bdtm.org.uk](mailto:claire.willetts@bdtm.org.uk)



Braintree District Museum



## INSIDE THE MILL

2018 saw the reopening of the Bocking Windmill to the public.

Although it hasn't been a working mill since 1929 much of the original machinery is still in place.

The windmill, located in Church Street, Bocking, is a postmill which is the earliest type of windmill and was built in 1721. This year the Friends of Bocking Windmill have held 8 open days and have shown hundreds of people round.

Find out more via [www.friendsofbockingwindmill.btck.co.uk/](http://www.friendsofbockingwindmill.btck.co.uk/) or on Facebook: [www.facebook.com/ChurchStreetBocking/](https://www.facebook.com/ChurchStreetBocking/)



Photo taken by Andy Connolly



# ARE YOU PREPARED for AN EMERGENCY?

Our emergency planning team, together with partners across the county, has produced a risk and resilience booklet to help residents prepare their homes, businesses and communities.

The main risk in the Braintree District has been identified as river and surface water flooding.

The winter of 2015/16 was the second wettest winter on record and a series of storms resulted in heavy and sustained rainfall. More than 17,000 UK properties were flooded and several bridges collapsed disrupting access to and from local communities.

Over the coming years rising temperatures, sea levels and an increase in the severity and frequency of extreme weather is likely to raise the risk of flooding in the UK.

## GET INVOLVED

The emergency services have to prioritise people in greatest need during an emergency so individuals and communities may have to rely on their own resources to minimise the impact of any emergency.

Many parishes in the district already have their own community emergency plan so if you would like to get involved please speak to your local parish council or to the emergency planning team at Braintree District Council.



## WHAT CAN YOU DO to protect your property?

Find out if your property is at risk of flooding by visiting the Environment Agency pages at [www.gov.uk](http://www.gov.uk)

- Sign up to receive flood warnings by registering with Flood Warnings Direct [www.gov.uk/sign-up-for-flood-warnings](http://www.gov.uk/sign-up-for-flood-warnings)
- Keep a supply of flood protection products, such as floodsax, door barriers and airbrick covers to protect your property before any flooding occurs and make sure you have adequate insurance. Blue Pages is an independent flood directory which can help you identify available products [bluepages.org.uk](http://bluepages.org.uk)
- Plan where you will go if you have to evacuate and how you will get there.

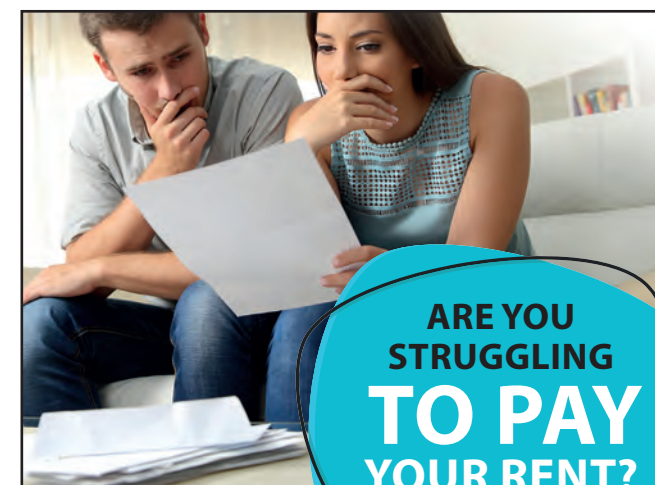


- Have supplies in your home that will enable you to cope for 3 days in case you are unable to evacuate.
- Where possible, move valuable and irreplaceable items to upper floors in times of flood risk.
- Identify neighbours who may need extra help in the event of an evacuation.

## TAKE A LOOK

at our Risk and Resilience booklet on our website  
[www.braintree.gov.uk/communityriskregister](http://www.braintree.gov.uk/communityriskregister)

Sign up for our emergency planning newsletter and alerts.  
Visit [www.braintree.gov.uk/tellmemore](http://www.braintree.gov.uk/tellmemore)



Braintree District Council's housing options team is encouraging you to get in touch if you're having problems paying your rent or are already in arrears.

The sooner you make contact, the more options will be available and the better the outcome is likely to be.

The team want to help, so give us a call  
01376 552525 or send us an e-mail  
[housingoptions@braintree.gov.uk](mailto:housingoptions@braintree.gov.uk)  
[www.braintree.gov.uk/housing](http://www.braintree.gov.uk/housing)

DON'T MISS

YOUR CHANCE TO

VOTE

New District and Parish councillors will be elected on MAY 2ND 2019

Register at [www.gov.uk/register-to-vote](http://www.gov.uk/register-to-vote)

Since 2016 we have awarded  
**£145,953**

Just some of the organisations we have helped can be seen in the background of this advert

Visit: [www.braintree.gov.uk/communitygrants](http://www.braintree.gov.uk/communitygrants)

The Braintree District Councillors' Community Grants Scheme allows groups to apply for funding to support local projects that benefit the people of Braintree District.



# What we do...

Our latest Customer Satisfaction Survey showed that many residents want to know all of the services we offer as a district council.

Take a look below...

**A** Abandoned vehicles  
Active Braintree  
Air pollution control/air quality control  
Allotment sites  
Anti-social behaviour (see page 18)  
Asbestos advice  
Asset management of Braintree District Council properties

**B** Benefits (Council tax support)  
Benefits (Housing)  
Bocking Windmill  
Bottle banks  
Braintree District Museum (01376 328868)  
Braintree Town Hall (01376 557776)  
Building control  
Building regulations  
Bulky waste (a paid for service carried out by T.R.E.E on behalf of Braintree District Council)  
Burial records  
Business rate billing and collection  
Business support

**C** Car park enforcement (service carried out by North Essex Parking Partnership visit [www1.parkingpartnership.org/north](http://www1.parkingpartnership.org/north))  
Car parks (public) management Braintree and Witham only  
Cemeteries Braintree, Bocking, Witham and Halstead  
CCTV Braintree and Halstead only. Witham is managed by Witham Town Council  
Civil emergency planning  
Commercial premises for rent  
Commercial waste paid for service  
Committee meeting records  
Community priced weddings  
Braintree District Community Safety Partnership (See page 18)  
Community Transport  
Conservation areas  
Contaminated land  
Council tax billing and recovery  
Councillors' Community Grants (see page 15)

**D** Dangerous structures - removal  
Dementia friendly communities  
Demolition of buildings - safety  
Disabled facility grants  
Dogs including strays, dogs dangerously out of control, investigating fouling, barking

**E** Election registration & Elections  
Environmental health  
Energy efficiency  
Energy switching  
Events bookings on public open space

**F** Flooding information - emergency planning  
Fly posting  
Fly tipping  
Food complaints  
Food hygiene business advice and inspections  
Food premises complaints  
Fraud - council tax and benefits

**G** Graffiti removal  
Grounds maintenance for example cemeteries, parks, allotments, sports fields

**H** Health & wellbeing  
Health and safety complaints  
Health and safety advice  
Highway rangers - Service provided in partnership with Essex County Council  
Home insulation - Working in partnership with Aran Services a local insulation company who can access grant funding for loft and cavity wall insulation. To arrange a free no obligation survey, contact Aran Services on 0800 5877795 or email [info@aranservices.co.uk](mailto:info@aranservices.co.uk)  
Houses in Multiple Occupation (HMOs) - complaints and standards  
Housing grants for heating and hot water systems

Housing register - applying for housing association homes  
Housing options advice - we can help with housing problems including the risk of homelessness  
Homelessness - emergencies out of office hours  
Housing standards - private sector housing

**I** Infectious disease control

**K** Keep safe project

**L** Landscape services  
Leisure centres - run for us by Fusion  
Litter enforcement  
Litter picking  
Livewell campaign  
Licensing including:  
Animal welfare, pet shops, riding schools, animal boarding, dog breeding, zoo licences, dangerous wild animals  
Caravan site licences  
Charity street collection licence  
Club premises certificate  
Gambling licence  
House to house charity collection  
Houses in multi occupancy - licence  
Pavement permits  
Premises licence  
Scrap metal dealers licence  
Small society lottery licence  
Special treatments licence - skin piercing, tattooing, semi-permanent make up  
Street trading consent  
Taxi licence  
Local authority controlled accident reporting  
Local land charges

**M** Markets - Witham and Braintree only  
Meeting room hire - Braintree Town Hall and Braintree Enterprise Centre  
Memorials

**N** Noise complaints



**O** Odour complaints  
Out of hours emergency line for Braintree District Council services (01376 552525 and listen to the instructions)

**P** Parking (service carried out by North Essex Parking Partnership visit [www1.parkingpartnership.org/north](http://www1.parkingpartnership.org/north))  
Parks and open spaces  
Pest control - wasps, mice, rats, hornets and fleas. This is a paid for service.  
Planning advice  
Planning applications  
Planning enforcement  
Planning: Local Plan  
Planning: supporting Neighbourhood Plans  
Play areas  
Pollution control  
Preservation of historic buildings  
Private water supplies  
Public toilets in Newland Street in Witham and Braintree Bus Park  
Public health funerals

**R** Rats  
Recycling and refuse  
River walks  
Rough sleepers - reporting concerns

**S** Skills for our district's businesses  
Special collections - T.R.E.E run the special collection / bulky waste disposal service on behalf of Braintree District Council  
Sports pitch bookings  
Strategic investments  
Street cleaning  
Street nameplates - repair/replacement  
Street naming  
Street sweeping  
Swimming pools - run for us by Fusion

**T** Temporary Traffic Regulation Orders - road closures  
Tourism  
Town centre development  
Traffic Regulation Orders - parking restrictions  
Tree preservation orders

**U** Unauthorised encampments on Braintree District Council land

**V** Verge cutting (depending on road)

**W** Warner Textile Archive (01376 316780)  
Water quality/sampling - analysis and risk assessment

Contact Braintree District Council:  
online [www.braintree.gov.uk](http://www.braintree.gov.uk)  
via email [csc@braintree.gov.uk](mailto:csc@braintree.gov.uk)  
or by calling 01376 552525

## Did you know..?

We prevent around **250 individuals/families** from becoming homeless each year

We help around **129 people** adapt their homes thanks to disabled facility grants every year

We help around **738 people** with nuisance complaints each year

We have cleared **767 fly tips** in the past 12 months

We took **98 stray dogs** off our streets last year

We have served **64 fines for littering** in the past 12 months

We've collected an estimated **56678.64 tonnes of waste** and recycled 28434.73 tonnes in 2017/18

## Our Partners...

Braintree District Council transferred its homes to Greenfields Community Housing in November 2007. You can contact Greenfields Community Housing via: [www.greenfieldsch.org.uk/contact/](http://www.greenfieldsch.org.uk/contact/)

Its Customer Service Centre is open 8:30am to 5pm, Monday to Friday, for all enquires. It operates an out-of-hours service for reporting repairs and anti-social behaviour, 24 hours per day, 365 days per year, which can be accessed by calling the number below and listening to the prompts.

Call: **01376 535400** Repairs Freephone: **0800 970 6050**

You can also get in touch by:  
Emailing [csc@greenfieldsch.org.uk](mailto:csc@greenfieldsch.org.uk), texting **07860 024 511** or accessing Livechat or our Self Service Portal via [www.greenfieldsch.org.uk](http://www.greenfieldsch.org.uk)



## Essex County Council

is responsible for more than 5,000 miles of roads, 4,600 miles of pavements, 127,000 streetlights and 4,000 miles of Public Rights of Way.

To report issues including potholes, faulty streetlights and blocked highways gullies, please visit [www.essex.gov.uk/highways](http://www.essex.gov.uk/highways)





**do it online**

**Did you know..?**

You can pay, report, apply and register for lots of our services online? You can...

- Report a missed bin collection
- Request recycling sacks
- Pay and check your Council Tax balance
- Report a fly-tip
- Report a street cleaning problem
- Tell us about a change of address

**It's easy, simple to use and will save time and money**

Our future plans include the introduction of online bookings and a 'My Account' function that will enable you to request services, interact with us online and track the progress.

**Visit [www.braintree.gov.uk/doitonline](http://www.braintree.gov.uk/doitonline)**

# Did you know that Braintree District Council can help you deal with **anti-social behaviour?**

## What is anti-social behaviour?

- ✓ Noisy neighbours (noise that is considered unreasonable including but not exclusively shouting and swearing)
- ✓ Playing of amplified music
- ✓ Dumping rubbish and littering
- ✓ Dog fouling
- ✓ Graffiti
- ✓ Fly tipping
- ✓ Accumulation of waste
- ✓ Abandoned vehicles
- ✓ Vehicle noise
- ✓ Noise in open spaces
- ✓ Dangerous dogs

## What we will not investigate as anti-social behaviour?

- ✗ Children playing in the street or communal areas
- ✗ Young people gathering socially unless they are being intimidating
- ✗ Babies crying
- ✗ Normal use of domestic appliances
- ✗ Civil disputes between neighbours e.g. shared driveways, fences, hedges
- ✗ Being unable to park outside your own home

If you would like advice regarding anti-social behaviour please call us on **01376 552525**



**Braintree's Essex Energy Switch**

Can you get a better deal on your gas and/or electricity bill?


Delivered in partnership with iChoosr, an independent specialist provider in collective energy switching, average household saving of £180 a year.

**APPLY ONLINE**

[www.braintree.gov.uk/essexenergyswitch](http://www.braintree.gov.uk/essexenergyswitch)

**Autumn 2018**  
Register from now until 8th October  
Auction on 9th October

**Winter 2018/19**  
Register from 4th December – 11th February  
Auction on 12th February



**Did you know?**

The Braintree District Community Safety Hub is based at Causeway House in Braintree. Representatives from Braintree District Council, the police, fire service, housing associations, probation services and the voluntary sector, among others, regularly come together to tackle issues affecting the district.

This year the partnership's priorities are:


- 1. Drugs in the community**
- 2. Hidden harms**
- 3. Violence and disorder**

To find out more visit:  
[www.braintree.gov.uk/communitysafetypartnership](http://www.braintree.gov.uk/communitysafetypartnership)

Please recycle this when you have finished with it.

# How satisfied are you?

with Braintree District Council *Survey*



Your feedback is important to us so we know how we are doing - whether you are satisfied with the main services we provide and if you think we are providing value for money. The results will be published in Summer 2019. Thank you for your time.

**CLOSING DATE: 31st March 2019**

We use your valuable feedback to change our services if needed. Last year satisfaction with keeping the district clear of litter dropped so we are looking at how this can be improved. We have also just introduced the Bewell strategy to ensure residents have access to facilities to encourage more participation in physical activity and sport as this was also highlighted as a concern. For full survey results visit: [www.braintree.gov.uk/css17-18results](http://www.braintree.gov.uk/css17-18results)

**1** How satisfied or dissatisfied are you with your local area as a place to live?

☐ Very satisfied      ☐ Very dissatisfied  
☐ Fairly satisfied      ☐ Neither satisfied nor dissatisfied  
☐ Fairly dissatisfied

Please tell us why: .....

.....

.....

.....

**2** Overall, how satisfied are you with the way Braintree District Council runs things?

☐ Very satisfied      ☐ Very dissatisfied  
☐ Fairly satisfied      ☐ Neither satisfied nor dissatisfied  
☐ Fairly dissatisfied

Please tell us why: .....

.....

.....

.....

**3** How satisfied are you with each of the following main services provided by Braintree District Council:

**3a** Keeping our District clear of Litter?

☐ Very satisfied      ☐ Very dissatisfied  
☐ Fairly satisfied      ☐ Neither satisfied nor dissatisfied  
☐ Fairly dissatisfied

Please tell us why: .....

.....

.....

.....

**3b** Recycling & Waste Collections?

☐ Very satisfied      ☐ Very dissatisfied  
☐ Fairly satisfied      ☐ Neither satisfied nor dissatisfied  
☐ Fairly dissatisfied

Please tell us why: .....

.....

.....

.....

**3c** Parks and Open Spaces?

☐ Very satisfied      ☐ Very dissatisfied  
☐ Fairly satisfied      ☐ Neither satisfied nor dissatisfied  
☐ Fairly dissatisfied

Please tell us why: .....

.....

.....

.....

**3d** Sports/Leisure Facilities?

☐ Very satisfied      ☐ Very dissatisfied  
☐ Fairly satisfied      ☐ Neither satisfied nor dissatisfied  
☐ Fairly dissatisfied      ☐ Do not use Sports/Leisure facilities

Please tell us why: .....

.....

.....

.....

**Complete this survey online**  
[www.braintree.gov.uk/css2018-19](http://www.braintree.gov.uk/css2018-19)

CM

P.T.O.



4 To what extent do you agree that Braintree District Council provides value for money?

- ☐ Strongly agree      ☐ Tend to disagree  
☐ Tend to agree      ☐ Strongly disagree  
☐ Neither agree nor disagree      ☐ Don't know

Please tell us why: .....

.....

.....

5 How informed do you feel about the services available from Braintree District Council?

- ☐ Very informed      ☐ Very uninformed  
☐ Fairly informed      ☐ Neither informed  
☐ Fairly uninformed      ☐ nor uninformed

Please tell us why: .....

.....

.....

.....

6 Braintree District Council produces email updates on a range of topics you can choose from, e.g. job alerts, refuse & recycling, planning, events and news. If you would like to sign up for this service please go to [www.braintree.gov.uk/tellmemore](http://www.braintree.gov.uk/tellmemore)

7 Braintree District Council has a People's Panel made up of members of the public from across the district. The panel takes part in a range of surveys which are either emailed or posted directly to them. The surveys are an important way to gain views and feedback for services across the council. If you would like to join the People's Panel, please tick YES and ensure you supply your full contact details.

- ☐ Yes

8 Please let us know how we can improve future editions of Contact to help us produce the best magazine for you.

.....

.....

.....

.....

\*If you don't wish to give us your full details, please just let us know which town/village you live in. This will help us analyse the results of this survey.

Name: .....

House number/ House name: .....

.....

Street: .....

\*Town/Village: .....

Postcode: .....

Contact number: .....

Email: .....

Gender: ☐ Male ☐ Female      Age: .....

Date: .....

## DATA PROTECTION

Braintree District Council is committed to protecting and respecting your privacy. For the purposes of data protection, Braintree District Council is a data controller and all personal information held is processed in accordance with data protection legislation.

It is necessary for the Council to gather, collect, store and process personal information to contact you if you have consented to join the People's Panel to enable the Council to send you surveys. Information you provide will also be used to understand the demographics of the survey results. The Council puts measures in place to protect the privacy of individuals throughout this process.

Data that you provide will be used for statistical analysis to help the Council review services. The results of the survey will be published on our website and only statistical information will be published. Any comments provided on the survey will be shared with the relevant departments within the Council to help us improve our quality of service to you. Your personal information will not be shared with any third parties.

The information you provide will be retained for 2 years after the survey has taken place after which it will be securely destroyed.

For further details on how we maintain the security of your personal information, your rights to access the information we hold on you, including correcting or removing your information, please refer to our privacy pages on our website which can be found at [www.braintree.gov.uk/privacy](http://www.braintree.gov.uk/privacy)

**Thank you for taking the time to complete this survey. Please return it using the Freepost address below (no stamp necessary):**

**Freepost plus RTHE-ABHH-BUUA,  
Marketing & Communications Team,  
Braintree District Council, Causeway House,  
Braintree, Essex, CM7 9BR**