

2 0 1 6

# contact

B R A I N T R E E   R E S I D E N T S '   M A G A Z I N E

## livewell in the Braintree District

“Keeping myself  
fit has been  
good for my  
mind”

Investing in  
our district

Supporting our  
small businesses

# CAN YOU GET A BETTER GAS AND ELECTRICITY DEAL?



SIGN UP to **Braintree's Essex Energy Switch**

**Braintree's Essex Energy Switch:**

- **Very simple and free to register**
- **Average savings of £262 per year**
- **No obligation to switch**

**If you've never switched energy supplier before or haven't done so for a number of years, you may be missing out on cheaper tariffs and opportunities to fix your energy bills. Braintree District Council is urging residents to sign up to Braintree's Essex Energy Switch.**

The scheme is delivered by the Council and iChoosr, an independent specialist provider in collective energy switching. Auctions are held quarterly with energy companies offering their best possible tariffs.

The next dates are:

Register from **2nd August – 10th October 2016**  
Auction on **11th October 2016**

Register from  
**6th December 2016 – 13th February 2017**  
Auction on **14th February 2017**

Register from **4th April – 22nd May 2017**  
Auction on **23rd May 2017**

Applying is very easy:

- Apply online at [www.braintree.gov.uk/essexenergyswitch](http://www.braintree.gov.uk/essexenergyswitch)
- Fill in your annual energy usage and current tariff, found on your energy bill or annual statement, together with your name and address.
- After the auction, you will be sent your personal offer showing the potential savings. You will have around 4 weeks to decide if you want to switch.
- If you do decide to switch, iChoosr will do the work for you.
- The iChoosr helpline number is 0800 048 8285 lines are open Mon-Fri 8am-5.30pm.
- Residents who do not have internet access can ask a relative, neighbour or friend to assist who can register using their own e-mail address.
- If you require assistance please contact Braintree District Council on 01376 552525 and ask for the Sustainability Team for support with signing-up.

**[www.braintree.gov.uk/essexenergyswitch](http://www.braintree.gov.uk/essexenergyswitch)**





# Contact us

## Braintree District Council

Braintree District Council  
Causeway House, Braintree,  
Essex CM7 9HB

**E:** [csc@braintree.gov.uk](mailto:csc@braintree.gov.uk)

**W:** [www.braintree.gov.uk](http://www.braintree.gov.uk)

**T:** 01376 552525



[www.facebook.com/  
braintreedistrictcouncil](https://www.facebook.com/braintreedistrictcouncil)



@BraintreeDC

If you require this document  
in another format please  
let us know



Join our

## People's Panel

for the Braintree District

For more information  
[www.braintree.gov.uk/  
peoplespanel](http://www.braintree.gov.uk/peoplespanel)  
or email [marketing@  
braintree.gov.uk](mailto:marketing@braintree.gov.uk)  
or call **01376 552525**  
and quote People's Panel

## Keep in touch



Register for text message  
updates e.g. services,  
bin collections, special  
announcements, offers and  
customer feedback. Text  
your postcode and house  
number (or house name)  
to 07797 803 203

# inside...



**4** Investing in  
our district



**6** Supporting our  
small businesses



**10** Your child's  
health



**14** Our  
community



**16** Protecting our  
environment



**19** Restoring  
historic gems

# Welcome...



This, our annual residents' magazine, is a chance to show you some of the different things we are working on and some of the challenges we face.

To say the last six years has been turbulent for us in local government would be a massive understatement. We have to do more with less, focus really tightly on the services we provide while maintaining high standards.

I'm pleased that our customer satisfaction survey revealed that your satisfaction with our services remains high and on top of that, we have retained the Customer Service Excellence standard.

So on behalf of myself, my fellow Councillors, our staff and volunteers, please know that we are all passionate about making the district a better place for you and your family to live, work and play.

**Graham Butland**

Leader of the Council

**SIGN UP** for our e-newsletter [www.braintree.gov.uk/econtact](http://www.braintree.gov.uk/econtact)

# INVESTING IN OUR



“

*We're not a health provider and we don't manage our congested main roads but we have land and through prudent financial management we have money which we want to invest in the district.*

Cllr Graham Butland  
Leader of the Council

”

As a council we've started to invest £28 million on improvements to health provision, our town centres, new businesses, roads and infrastructure in a unique step described as “imaginative” and “prudent” by our MPs.

In May Braintree District Council approved plans to invest £28 million to support our district's infrastructure both now and in the future.

With significant housing and employment growth in the district over the next 18 years we want to use the money we have to improve and invest in our district.

Like many organisations in the public sector we have had to tighten our belts, but through prudent management we are in a good position to tackle the challenges ahead.

Leader of the Council  
Cllr Graham Butland said:

*“I want the best for residents in our district. We can't just stand on the sidelines knowing things in our district could be better. We've got to put our money where our mouth is and I hope this encourages other partners to do the same.*

*“We're in a position to invest money to deliver the improvements we all want and need and we will use that investment to create returns that we will continue to plough into our communities for years to come.”*

## We are looking for other investment opportunities

throughout the district specifically those that help us improve:

- health provision
- our three town centres
- our most congested roads
- opportunities for new business growth and employment

James Cleverly, Braintree MP, said: *“This is an imaginative approach and a prudent use of taxpayers' money. It will help to unlock improvements in the delivery of public services, support new health facilities and provide an opportunity to regenerate and boost our town centres.”*



# DISTRICT

## What we're doing

### Braintree regeneration

The first part of the investment will see Braintree Town Centre receive a multi-million pound boost with the redevelopment of the land behind Braintree Town Hall.

It will transform the area with a modern and welcoming complex providing a good occupier mix to complement our town's existing shops and services. It will also be home to a modern healthcare facility which will give patients of Mount Chambers a fit for purpose doctors' surgery.

The new development, which we hope will be in place by 2020, will mean new places to socialise and relax with friends, colleagues and family.



Cllr Tom Cunningham, Cabinet Member for Economic Development at Braintree District Council said:

*"Redevelopment of this site is the key that unlocks further regeneration for Braintree. Residents can look forward to a first class new health facility and we can get to work to really invigorate Braintree."*

### Health in Witham

Helping the NHS provide residents with better access to GPs in Witham will be tackled through our investment plan. We're looking to invest £3 million in Witham primary care by using money from the sale of the old Bramston Sports Centre in Bridge Street to help the NHS and local GPs deliver new medical facilities for the town.



The planned move has been welcomed by the town's MP Priti Patel and NHS Mid Essex CCG who will be working alongside Witham GPs to progress the proposals for the new health care premises.

Priti Patel, Witham MP, said:  
*"Witham is a growing town and in need of new health facilities. I have been campaigning for a new multi-purpose healthcare centre to be established in the town and the commitment being shown by Braintree District Council with this investment is welcome. Our partners in the NHS and other services should now have the confidence to come forward and support the delivery of new health services in the town from the new facility the Council is supporting."*

### Improving health provision in Braintree

As well as providing a modern healthcare facility for current and future patients of Mount Chambers as part of the Braintree Town regeneration scheme, Braintree District Council is also working on another health facility.

In partnership with NHS England, we are working on plans to create a new health facility within college premises in Church Lane. This will be home to the St Lawrence Surgery.

Cllr Butland said: *"Improving healthcare provision in our district is a priority for our residents, it is the one thing above everything else that I know residents are really concerned about. By working with the NHS, we want to invest in our GP surgeries so that our residents get access to good healthcare."*



*"We have the opportunity to improve the situation at St. Lawrence Doctors Surgery. Through investing in a modern surgery at The College at Braintree the building will be redesigned to provide a facility fit for current demand and future growth."*

# Business

As a council we work closely with businesses everyday advising them on licensing, environmental health, business rates, trade waste, commercial premises, council contract opportunities and more.

## Here we meet just some of our local business people:

**Name:** Merle Baker

**Business:** Mango Twist – retailer for children's clothes

### Why did you open the shop in Halstead?

I opened my business 15 years ago with my friend Vicky Stapleton. I was pregnant at the time with my daughter and Vicky had a four year old little girl. We identified a gap in the market so decided to specialise in good quality boys and girls clothing for 0 to 12 year olds. We chose Halstead because it's local and we liked the town. Vicky later went on to open a shoe and accessory shop next door.

My customers travel from all over, including Ipswich, Bury, Colchester and Chelmsford. First time customers often tell us they expected our products to be expensive and are surprised to find good quality clothing at reasonable prices. There's no pressure to buy just come in and have a look around.



**Name:** Richard Downes

**Business:** Witham Cleaning Services

### Why did you decide to start your own business?

I started my business more than 30 years ago and now my sons Daniel and Richard are partners in the business too. We employ a number of people from the local area and we all really care about the community. I sponsor local groups such as Witham Town Football Club for their youth in the community ethos and Witham Bowls Club.

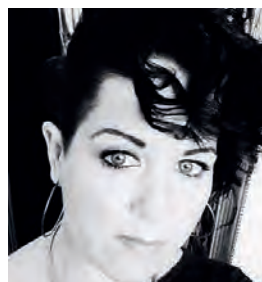


**Name:** Stacey Finney, Braintree

**Business:** Labeltique, Online

### Why did you decide to start your own business?

We set up last year with the aim of providing residents with clothing you won't see on everyone else on a night out! We search wholesalers for unusual and on-trend pieces of clothing.



**Name** Kat Berale

**Business:** Cabello an all Natural, Eco Friendly Aveda Hair and Beauty Salon in Witham.

### How is it going?

Having broken even within just 3 months, Witham has been a profitable place for us. The population here is increasing with new housing, which continues to attract many new customers. There are lots of community days, such as the carnival, the International Puppet festival and events in the park and town centre which give us the opportunity to promote our services to new customers.



### Why Witham?

Witham has a tremendous sense of community and I feel that in the salon every day. I am a proud supporter of Witham and hope to expand the salon in the future. We have received great support from MP Priti Patel who attended our official opening and gave advice in terms of business rate relief which helped us save more than £2000 and information regarding apprenticeships. The Witham Chamber of Commerce has also been a great resource for local networking and providing information on community projects, local sponsorship, monthly business talks, help and advice.

*"Witham has been a profitable place for us"*



# Supporting our entrepreneurs



Business start-ups and growing businesses in our district are already benefiting from investment from Braintree District Council and Essex County Council worth **£1.4 million**

The newly built Ignite House is made up of purpose built business units on Springwood Drive in Braintree which provide businesses with office space as well as training and conference facilities, a shared reception, parking spaces and business advice and support. It complements the existing enterprise centre on the same site.

Sajid Javid MP, who at the time was Secretary of State for Business, Innovation and Skills, was one of the first people to visit Ignite House to see the investment in new and growing businesses.

Liz Storey,  
CEO at Ignite which  
runs the units, said:  
**This much - needed purpose  
built facility will enable us to  
support more than 250 business  
startups over the next three  
years, plus help other  
businesses grow.**

Gemma Townsend,  
runs a sports massage  
and rehabilitation clinic at  
one of the units, she said:  
**The units are a great starting  
point, enough space to expand  
a little further as well as the  
support of staff to help you  
understand how to progress  
your business.**

## LOOKING FOR A JOB?

Following the success of our first job fair last year, Braintree District Council and Braintree Job Centre are holding another one on **Friday September 23** at Causeway House in Braintree from 10-3pm



Come and meet employers, trainers and **[4children.org.uk](http://4children.org.uk)** who provide support for parents who are returning to work.

## Christmas is coming!

**Town Centre Christmas events include:**

Saturday 19th November  
**Braintree Town Centre Christmas Event**

Saturday 26th November  
**Witham Dickensian Market**

Saturday 26th November  
**Halstead Christmas Fayre**

# Homes

## Landlord Select scheme

**Do you have a property to rent out?... we can help...**

Braintree District Council has incentives available for landlords who house families referred to them by the Housing Options Team.

For more information on our Landlord Select scheme  
[www.braintree.gov.uk](http://www.braintree.gov.uk)  
Contact: Simon Agra  
**01376 552525**  
extension: 2127



## KEEPING YOUR HOME SAFE

Private sector landlords are now required to have at least one smoke alarm installed on every storey of their properties and a carbon monoxide alarm in any room containing a solid fuel burning appliance (e.g. a coal fire or a wood burning stove).

The landlord must also make sure the alarms are in working order at the start of each new tenancy.

Braintree District Council's Environmental Health team can impose a fine of up to £5,000 where a landlord fails to comply.

Visit [www.braintree.gov.uk/environmentalhealth](http://www.braintree.gov.uk/environmentalhealth)

## Breathing new life into unwanted furniture

The Community Furniture & Electrical Warehouse in East Street, Braintree, has had more than 400 customers since it was set up last year and has raised more than £25,000 from goods that otherwise would be destined for landfill.



They have created new jobs and training opportunities within the Braintree area and enabled Braintree District Council to divert goods collected as waste to be reused.

The warehouse in East Street provides all residents with a range of appliances to suit every budget and all come with four months warranty.

The award-winning project has now started to work with local charities Age UK Essex and PARC Essex to help them raise funds through the sales of donated furniture.

[www.braintree.gov.uk/bulkywaste](http://www.braintree.gov.uk/bulkywaste)



# LOCAL PLAN

Just like other areas in the country, we're working on a new Local Plan for the district.



Having one is really important because it sets the direction for our future development of sites but it also gives us more power to stop inappropriate development.

We need to build more homes so that our children and grandchildren can find homes to suit them. We need to deliver 845 homes each year between now and 2033 in order to comply with national guidelines and to meet locally-driven demand.

Between June 27 and August 19 we asked for your comments on our proposed draft local plan. Thank you to everyone who came forward with comments.

For more visit [www.braintree.gov.uk](http://www.braintree.gov.uk) or email [localplan@braintree.gov.uk](mailto:localplan@braintree.gov.uk)

## THE NEXT STEPS ARE:

**SEPTEMBER - NOVEMBER 2016**

Consideration of public consultation responses to the draft Local Plan and revisions to the Plan as appropriate

**WINTER 2016**

Second public consultation

**SPRING 2017**

Submission of Local Plan to the Planning Inspectorate for consideration

**SUMMER/AUTUMN 2017**

(subject to Inspectorate timetable) - Independent public examination held on the Local Plan by the Planning Inspector

**EARLY 2018**

Adoption of the Local Plan by the Council

# Customer Service Excellence Standard

Braintree District Council has recently achieved the Customer Service Excellence Standard for yet another year. It means that the council and its staff have been recognised for its efficient, effective and excellent customer service which puts the customer first.

The Customer Service Excellence ® standard tests in great depth areas that research has indicated are a priority for customers, with particular focus on delivery, timeliness, information, professionalism and staff attitude.

To find out more about our customer service standards visit [www.braintree.gov.uk/valuedcustomer](http://www.braintree.gov.uk/valuedcustomer)



## Customer Satisfaction results

Satisfaction with the Braintree District as a place to live rose from

**87% to 92%**

and satisfaction with the way BDC runs things rose from

**81% to 86%**

Source: BDC's Customer Satisfaction Survey - 2015/16

# Livewell

.....

**Our health** is determined by many factors, not just clinical health care. That's why it is so important that we as a district council help to support our residents to have healthy and happy lifestyles.

.....

Traditionally the Council has contributed towards the protection of residents' health by:

- Ensuring eating establishments are monitored for hygiene and safety
- Running a pest control service
- Testing drinking water
- Monitoring air and noise pollution

But it has been recognised that the rising obesity levels are having an impact on the health and social care system and all public bodies need to work much more closely to find solutions to improve wellbeing.

Braintree District Council can do this through:

**our leisure centres - we have invested £10 million** in our leisure centres since 2012.

**by providing good open spaces and play areas** – such as Bocking Blackwater Nature reserve.

**investing in buildings to help the NHS** provide residents with better medical centres that are fit for the 21st century.

One of our main priorities is to tackle obesity in our district. Nearly seven in ten (68%) adults are either overweight or obese, 25% being obese, which is higher than the national average. National figures state that 1 in 5 children starting reception year are overweight/obese, which rises to 1 in 3 by the end of primary school.

We are developing the **Livewell Child** project in an attempt to halt the rise in obesity in primary school children. The project aims to work with schools, families and communities to help support children to have a healthy weight and be more active through play. The project, running over 3 years, will use fun and easy ways to help make changes that will help us all live well. One of the schemes we are hoping to introduce is the Daily Mile. This is something that some schools are already engaged in. The Daily Mile is where all the school children run 1 mile per day whilst at school. Where this has been trialled elsewhere in the country there has been a drastic reduction in the number of obese children.



## Social prescribing

is a way to help people make positive changes in their lives and within their communities by linking to voluntary and community groups and other non clinical services that can help them to:

- Feel more involved in the community
- Meet new people
- Make some changes to improve their health and wellbeing.

Visit [connectwellessex.org.uk](http://connectwellessex.org.uk)

.....

## How can good planning help tackle health issues?

Good planning can help tackle some of the social issues we face. There is a strong link between planning and health so our new planning policies – as part of our local plan - should help our residents make healthier life choices.

Through the planning process we can look for opportunities to provide healthy environments that encourage walking and cycling and provide sufficient open space.

We will work with developers at pre-application stage to assess the impact of any development on health and wellbeing so this could include things like restricting takeaways near schools.



## Young people will be encouraged to:

- ✓ Be healthy heroes through 'grow your own' and 'let's cook' programmes
- ✓ Take part in Daily Mile initiatives
- ✓ Get outdoors



## Health Facts

# 86%

of adults in the Braintree district are NOT doing enough physical activity to benefit their health

# 13%

of adults in our district are smokers

# 62%

of recorded deaths from cardiovascular disease, between 2012 and 2014, were preventable

# 68%

of people in our district are overweight or obese

# 17%

of children in our district are classified as obese

## “Keeping myself fit has been good for my mind”

When Donna Dobrowolski tested positive for the cancer susceptibility gene BRCA following her sister's breast cancer diagnosis she found running and yoga helped her cope.



Donna said: **It would have been easy to say I didn't have time to exercise or that my life was too stressful but I joined a running group and followed a plan with set miles to run every week. When my sister was better I continued to run but I found out that I had tested positive for the BRCA cancer gene so doctors recommended preventive surgery and I had a total of four operations. I didn't let this stop my running. I returned to the running group to keep up my fitness and did 10km races to keep me focused. I've also started yoga to help me relax. Keeping myself fit has been good for my mind. When you are stressed or low it is great to get out in the fresh air and not think of anything other than running. Never think you can't do it. There is so much help and support out there and everyone has to start somewhere. I had never run at all two years ago and I can't believe what I've achieved even with everything going on in my life. So if you have been thinking about getting active I'd say just go for it.**

# ”



Over the summer we launched our latest Livewell campaign called **'Get Outdoors'.**

Around one in two women and a third of all men in England are damaging their health through a lack of physical activity, with over a third of adults doing less than 30 minutes of physical activity a week.

During the summer months we promoted a variety of different activities for the whole family to enjoy from open gyms, to walking football and parkruns.

For all our Livewell tips visit [www.livewellcampaign.co.uk](http://www.livewellcampaign.co.uk)

# ENVIRONMENT

## How to reduce food waste

**Almost 50% of the total amount of food waste comes from our homes.**

**In the UK 7 million tonnes of food and drink is thrown away, of which more than half could have been eaten. Two of the main reasons why we throw good food away: we buy or make too much, or we don't use it in time.**

You could save hundreds of pounds a year by knowing the right information about food safety.

[www.lovefoodhatewaste.com](http://www.lovefoodhatewaste.com) provides information about recommended portion sizes and tasty recipes using leftover food to help prevent waste.

The Food Standards Agency provides handy freezing tips and information about 'Use by' and 'Best Before' dates visit

[www.food.gov.uk/useby](http://www.food.gov.uk/useby)



Each year the Braintree district recycles over **4,000 tonnes** of food waste

Over 30 primary schools have pledged to recycle their food waste

No amount  
**TOO SMALL**  
start by recycling your  
**TEABAGS**  
and **COFFEE**  
GROUNDS



**Use your weekly food recycling collection for all your food waste**

## The 2016 Love Essex anti-litter campaign is now underway

We're working with Local Authorities and businesses across Essex to tackle the persistent problem of litter. Help keep our towns, villages and countryside free of litter by reporting people who toss litter from their vehicle. Take the vehicle registration, location, time and who (passenger/driver) and report it to us.



[www.braintree.gov.uk/tosser](http://www.braintree.gov.uk/tosser)  
[csc@braintree.gov.uk](mailto:csc@braintree.gov.uk) Call 01376 552525



# Changes to garden waste collection

## over the winter months

The garden waste collected from green wheeled bins during the winter months is not cost effective for the amount that is collected. So, with your help, we have decided the green waste service will not operate during the months of December, January and February.

The amount of Government Grant funding we get for our day to day spending is being withdrawn and while we are in a better position than most through sound financial planning and making savings and investments early, we still need to make efficiency savings.

Last year we asked you to help us make this decision and out of the options given, 67% of residents were in favour of a suspension during the months of December, January and February rather than charge for the service - which other councils do - or withdrawing the service completely.

## So what can you do during these months?

### YOU CAN:

- ✓ Compost at home. For a special discounted compost bin offer of £8.98 visit [www.getcomposting.com](http://www.getcomposting.com) or call 0844 571 4444 quote reference ECC13L
- ✓ Take it to an Essex County Council's Recycling Centre for Household Waste (RCHW)



## RUN A BUSINESS?

**We offer a bespoke business waste collection which is local, reliable and great value to fit with your business needs.**

We can help you reduce, reuse and recycle your waste to save you money, offering you a range of containers which are secure, neat and unobtrusive in a tailored package.

We have a dedicated, professional and reliable team. There are no hidden costs in our pricing and we know the district inside out. **For your free, no obligation quote please call 01376 552525**



## CLEAR SACKS ARE FOR RECYCLING ONLY

FILL THEM TO THE TOP AND TIE A KNOT



LET'S GET IT RIGHT

... any other waste placed in these sacks WILL NOT BE COLLECTED

### YES PLEASE:

- ✓ Newspapers, magazines & catalogues
- ✓ Paper, cardboard & junk mail
- ✓ Plastic bottles & plastic packaging
- ✓ Tins, cans & aerosols
- ✓ Beverage cartons



 **recycle now**

# YOUR COMMUNITY

## The kindness of volunteers...

**T**hroughout our district we have wonderful volunteers including Tree Wardens who act as 'eyes and ears' helping us to protect trees, Green Heart Champions who litter pick their local areas and our open space and local nature reserve volunteer community groups who help us to enhance our open spaces for the benefit of people and wildlife.

Denise Perrin, Chair of the Friends of Hoppit Mead Local Nature Reserve, tells us why she and her team volunteer.

**"We're a small friendly group of local residents that help Braintree District Council look after Hoppit Mead Local Nature Reserve. We meet every first Saturday of the month and welcome new volunteers for as little or as much time as you are able to give. It's a great way to stay active, enjoy the outdoors and help to make our area a great place for people and wildlife to enjoy."**



**Want to get involved in nature conservation volunteering?**

Contact Amanda Turburville on [amatu@braintree.gov.uk](mailto:amatu@braintree.gov.uk)



**Our Community Transport scheme couldn't function without our volunteers. They make such a difference to our residents...**

**"Me and all the other girls play bingo at the club! We think the service is fantastic. The drivers always put a smile on my face. When I lost my husband I became very lonely and withdrawn, a friend told me about the service and at first I wasn't sure. Now I am so glad I took the chance because we have all helped each other overcome problems."**

**Doreen Seabright**

**"All my friends use the service and have been for many years. It gives us a chance to catch up and talk about things. I can't thank the drivers enough, they really are a pleasure to be around and I look forward to my weekly outing with the group."**

**Chris Morton**

**Community Transport Volunteer Drivers:**

**Do you have a few hours to spare and enjoy helping others?**

**01376 557883**

or email **community.**

**transport@braintree.gov.uk**





# Community Grants



The Witham Boys Brigade was one of the community groups to be awarded money from the Braintree District Council's MiCommunity Fund this year.

The group was given just over £11,000 to invest in the Cycle Centre, a drop-in café style cycle shop which encourages people to take up cycling, or develop an existing interest.

“The money has already had an impact in getting people in Witham interested in bikes and joining in with cycling events. It has made a real difference to our community.”

Keith Meredith from Witham Boys Brigade

**mi**community\*  
ideas invest improve

Other community projects to receive funding were:

- Blackmore End Village Hall
- Braintree District Mencap Society
- Great Bardfield Town Hall roof
- Gosfield Nature Reserve
- Little Yeldham Village Hall
- Rayne Village Hall Playing Fields
- Silver End Tots Baby and Toddler Group
- St Andrew's Church, Earls Colne
- Stisted Parish Council pavilion
- Braintree East - Pop up cinema
- Ferriers Barn - Gardens for physically disabled people
- Ridgewell Village Hall - Play equipment

Since the Mi Community Fund began five years ago more than 60 community groups have received amounts ranging from £1,500 to £25,000 on a variety of projects.

**This year was the fifth and final round of Mi Community funding, it has been replaced with the councillors' community grant scheme.**



## Do you have a local community project or initiative that you need funding for?

Your local Ward Councillor is looking to support projects, activities or events from £100 to £1,500 which will improve the quality of life for the people of the Braintree District.

### Funding for projects could include:

- building improvements
- playground equipment
- recreation facilities
- IT equipment
- sports equipment
- disabled facilities
- energy efficiency measures
- salaries
- rent
- training fees
- event costs
- general repairs
- new initiatives

All application forms need to be submitted and approved by your local Councillor.

For more information and to discuss your funding request please contact your local ward Councillor, details can be found at:

[www.braintree.gov.uk/councillors](http://www.braintree.gov.uk/councillors)

**DID YOU KNOW?**

Creating a parish, town or community action plan helps residents and local groups to come together to identify issues and influence what happens in their area. We have a small grants scheme, up to £750, available until February 2017 to help with the creation of your plan. Visit: [www.braintree.gov.uk/communityledplans](http://www.braintree.gov.uk/communityledplans)

# Help us to keep the district safe...



The Crime & Disorder Act 1998 placed a joint responsibility upon specific agencies and other partners within the community to develop and implement strategies to protect their communities from crime and help people feel safe.

## What has the partnership achieved in the last 12 months?

- Developed a male domestic abuse campaign with Safer Places.
- Developed a Child Sexual Exploitation (CSE) awareness campaign targeting staff working within the hotel industry.
- Produced a CSE information booklet for parents and carers.
- Part funded a Young Persons Independent Sexual Violence Advisor to work with children & young people who have been sexually abused or exploited.
- Delivered CSE prevention and education workshops to more than 1000 secondary school pupils.
- Delivered safeguarding vulnerable passenger training to taxi drivers to assist them in keeping themselves and their passengers safe.
- In partnership with Uttlesford CSP held a Hidden Harm conference for professionals - a day that dealt with difficult issues including gangs, CSE and modern day slavery.

## The Braintree District Community Safety Partnership is made of representatives from:

- Braintree District Council
- Essex Police
- Essex Fire & Rescue Service
- Mid Essex Clinical Commissioning Group
- Essex Community Rehabilitation Company
- Essex County Council - primary and secondary education
- Greenfields Community Housing
- BDVSA (Braintree District Voluntary Support Agency)

## Our priorities for 2016/17

- Reducing the risk and impact of Hidden Harm
- Reducing re-offending
- Effective partnership working to meet emerging local threats and issues

Contact us on:

**communityservices@braintree.gov.uk**



## You can help us fight and prevent crime

My colleagues and I are working hard across the district to keep people safe and put criminals before the courts. But we need your help too. We want to harness the energy and skills of our communities. So if you're interested in the fantastic experiences being a Special Constable gives, or if you can give time to be a leader for our Volunteer Police Cadets, please drop me a line to find out more **[craig.carrington@essex.pnn.police.uk](mailto:craig.carrington@essex.pnn.police.uk)**

## Keep your home safe this season

Whether it's making sure windows are closed in unoccupied rooms if we enjoy an Indian summer or checking security lights and timer switches as the days get shorter in to winter, there are plenty of things you can do this season to reduce your risk of crime.

Your risk of being the victim of 'acquisitive' crime like burglary is much lower today than it was a decade ago, but thieves are opportunists. They will look for an open door or a handbag left in view in a car but they'll be put off by good security lights, a padlocked shed or secure and alarmed windows.

Chief Inspector **Craig Carrington**  
District Commander, Braintree and Uttlesford

## Keep your home safe

Take simple steps to help protect your homes against burglars.

If you have uPVC doors lift the door handle then turn and remove the key, and use dead bolts.

Keep keys readily available in the case of an emergency but out of sight.

Visit **[essex.police.uk](http://essex.police.uk)** or contact your local crime prevention tactical advisor on 101.





# WHAT'S ON?

## AT BRAINTREE DISTRICT MUSEUM

SEPT - DEC  
2016

### SEPTEMBER

#### EVENT:

#### HERITAGE OPEN DAYS - BOCKING WINDMILL TOUR

**SATURDAY 10 SEPTEMBER**  
12.30pm - 3.00pm

Event will start at the mill.  
Visit this impressive 1721  
post mill with original  
machinery over five floors.  
Sited off Church Street,  
Bocking.

#### Admission: FREE

(Donations to the Friends  
of Bocking Windmill much  
appreciated)

#### TALK:

#### COURTAULD HISTORY WITH AMANDA WILKINSON TUESDAY 20 SEPTEMBER

2:00pm - 3:00pm

Dr Amanda Wilkinson from  
the University of Essex will  
be speaking about Victorian  
women's employment  
recorded in the census,  
particularly those who  
worked locally in the textile  
industry for Courtauld & Co.

#### Ticket: £3.00

Refreshments will be  
provided.



#### SHOWTIME!:

#### COUNTRY CLASSICS TUESDAY 27 SEPTEMBER

1:30pm - 4:00pm

Enjoy singing duet Rita  
B & Ray as they perform  
country classics from Glen  
Campbell, Patsy Cline,  
Mavericks and Dolly Parton.

#### Tickets £10.00

Refreshments will be  
provided.

### OCTOBER

#### REUNION & TALK:

#### COURTAULD & COMPANY SATURDAY 1 OCTOBER

7:00pm - 9:00pm

Following the success  
of last year's reunion for  
Courtauld employees,  
we are running the event  
again! If you worked or  
had a family member who  
worked at Courtaulds come  
along and join us for a talk  
and reminisce with other  
past employees. We are  
also interested in recording  
people's memories of the  
company for our collection,  
if you would like to be part  
of this project come and  
find out more.

The talk will be given by  
John Miners, a textile  
consultant, who will speak  
about the history of textiles  
in Essex, his time employed  
at Courtaulds as well as his  
work today sourcing and  
supplying historic textiles  
for restoration projects.

#### Ticket: £3.00

Refreshments will be  
provided.

#### TALK:

#### THOMAS PAYCOCKE OF COGGESHALL WITH DR CHRIS THORNTON

**FRIDAY 7 OCTOBER**  
7:30pm - 9:30pm

Part of the Friends of  
Braithree District Museum  
series of talks. Dr Chris  
Thornton will be dropping  
by the museum to talk  
about Thomas Paycocke,  
his family, his business and  
his house.

#### NEW EXHIBITION:

#### POSTCARDS, POSTERS AND PORCELAIN

**SATURDAY 8 OCTOBER**  
- JANUARY 2017

Open 10am - 4pm Tuesday  
- Saturday

A chance to see John  
Adam's wonderful private  
collection of postcards,  
posters and local crested  
china that he has amassed  
over 30 years of Braithree,  
Bocking, The Notleys,  
Stisted, Rayne, Cressing  
and Faulkbourne.

**Admission: £3**  
**concessions £1.50**  
**children (up to 16) FREE**

#### REUNION:

#### LAKE & ELLIOT TUESDAY 11 OCTOBER

3:00pm - 5:00pm

Our annual Lake & Elliot  
reunion for past employees  
and those who have an  
interest in the company, join  
us for a reminisce and look  
at people's memories from  
the museum collections.  
We are also interested in  
recording more memories  
of the company for our  
collection, if you would like  
to be part of this project  
come and find out more.

Refreshments will be  
provided.

**FREE (privately sponsored)**

#### WORKSHOP:

#### BEER TASTING FRIDAY 14 OCTOBER

7:30pm - 9:30pm

Did you know Essex used  
to be a large hop growing  
area? How has beer changed  
over the centuries? Discover  
how the taste of beer has  
evolved with a professional  
brewer at our beer tasting  
evening. There will be  
different styles to taste from  
real ale and the first lager to  
more recent modern craft  
styles. Find out more about  
this tradition as well as how  
the brewing process has  
evolved. Sponsored  
by Simply Hops

**Ticket: £15**  
(includes sampling  
6 beers and snacks)



#### TALK:

#### BRADFORD STREET TUESDAY 18 OCTOBER

3pm START

The Friends of Bradford  
Street take us for a journey  
along the oldest road in  
Bocking, exploring the history  
of the buildings and their  
residents for a fascinating  
and interesting talk.

**Tickets: £3.00**

#### QUIZ:

#### QUIZ NIGHT FRIDAY 21 OCTOBER

7:30pm - 9:30pm

Join our quiz master for a  
great evening of general  
knowledge questions.  
And to keep in with the  
season a specialist round  
on HALLOWEEN too! All  
funds raised will go towards  
supporting the Museum.

**Tickets: £5.00**

Bring your own refreshments

### HALF TERM

#### MYTHS, LEGENDS AND FOLKLORE TUESDAY TO FRIDAY

11:00am - 1:00pm

**ALL ACTIVITIES ARE  
FREE WITH ADMISSION**

**£2 Children (FREE FOR  
UNDER 5's)**

BOOKING ESSENTIAL,  
CALL 01376 328868

Make your half term  
legendary! Help bring  
local myths and fables  
to life with our craft  
activities and storytelling  
workshops.

For full details of each  
workshop please visit  
our website [www.braithreemuseum.co.uk](http://www.braithreemuseum.co.uk)



#### WITCHES AND WIZARDS SCHOOL

**SATURDAY 29 OCTOBER**  
11:00am - 4:00pm

Come and learn how to  
be a witch or a wizard.

**TICKET: £7.50** (includes  
admission)

### NOVEMBER

#### FRIENDS TALK:

#### DOPPELGANGERS READ POETRY WITH NEIL RICHARDSON AND JOHN JEMISON

**FRIDAY 4 NOVEMBER**  
7:30pm - 9:30pm

Mr. Richardson and  
Mr. Jemison will give  
us a varied, funny and  
sometimes serious poetry  
recital. It promises to be an  
entertaining evening!

#### FILM SHOW:

#### IT'S 1976 TUESDAY 15 NOVEMBER

3:00pm start

Nick Williamson lived in  
London Road, Braithree  
and was a prolific amateur  
film maker. Between 1957  
and 1987 he used an 8mm  
camera to film the changing  
historic townscape and  
events in Braithree. We

have started a project  
to digitize his collection  
so, come and see some  
fantastic footage as well  
as commentary from 1976  
showing the electrification  
of the Braithree railway  
line, Armistice parade and  
changes in New Street as  
the school was demolished.

#### EVENT:

#### BRAITHREE CHRISTMAS LIGHTS SWITCH ON SATURDAY 19 NOVEMBER

10:00am - 4:00pm

Join us at the Museum for;

- Indoor Craft Market
- Face Painting
- Christmas Crafts  
and Activities
- Christmas  
Carols
- Christmas  
Shopping



#### SHOWTIME!:

#### ROCKIN' AROUND THE CHRISTMAS TREE WITH BRIAN SHAW TUESDAY 29 NOVEMBER

1:30pm - 4:00pm

Brian Shaw will be playing  
iconic and traditional  
Christmas tunes to get  
us all in the mood for the  
festive season including;  
White Christmas, Jingle  
Bells, Winter Wonderland  
and many more!

**Tickets: £10.00**

Refreshments  
will be provided.



### DECEMBER

#### EVENT:

#### MILITARY WIVES CHOIR - CHRISTMAS CAROLS SATURDAY 10 DECEMBER

7:30pm - 9:30pm

"We bring women in the  
military community closer  
together through singing!"

Get into the festive spirit  
and enjoy the angelic voices  
of the ladies in the Military  
Wives Choir singing festive  
songs. With a glass of  
mulled wine and mince pies.



Braithree District  
Museum

Community Transport  
is available on  
**01376 557883**  
for our afternoon talks

Please check for updates & more information W: [www.braithreemuseum.co.uk](http://www.braithreemuseum.co.uk) T: 01376 328 868 E: [info@braithreemuseum.co.uk](mailto:info@braithreemuseum.co.uk)

# ADVERTISE HERE

Advertising opportunities available within  
this magazine, in car parks and on roundabouts.

For more information

 [marketing@braintree.gov.uk](mailto:marketing@braintree.gov.uk)  01376 552525

## Information Service

**healthwatch**  
Essex

### We can help you find out about:

Health and care services near to you  
How to access the support and advice you need  
What to do if you have a concern or complaint  
How to share feedback about services

Call **0300 500 1895**

Monday to Friday 9am to 5pm  
for the cost of a local call

[healthwatchessex.org.uk/info](http://healthwatchessex.org.uk/info)





# RESTORATION OF STREET IRONWORK

## in Braintree & Bocking

By Mike Bardell, President  
Braintree & Bocking Civic Society



**The first fingerpost** is on the green at the junction of Cressing Road and Chapel Hill. It has two arms, broken off perhaps fifty years ago, and as their restoration would partially mask a modern traffic sign The Society approached Councillor Graham Butland, Leader of Braintree District Council, who discussed the potential restoration with the Essex County Council Cabinet Member for Highways. The fingerpost has been fully restored to its original black and white banded livery.



In 2015 Braintree & Bocking Civic Society resolved to attempt restoration of three pieces of street ironwork within the bounds of the town.

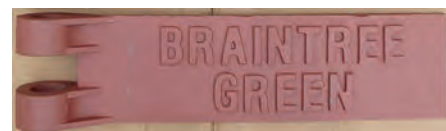
Two of these are 1935 cast iron fingerposts made for Braintree & Bocking Urban District Council by Maldon Ironworks, a firm that existed between 1872 until 1947 and which supplied posts to much of Essex. The third is a cast iron milepost dating from the late 19th Century made by Messrs T Firmin a builder of Greenstead Green.

Restoration expertise has been provided by John V Nicholls, Essex Representative of the Milestone Society.

**The second fingerpost** is on the east side of London Road at the junction of Queenborough Lane. The original arm had the legend BRAINTREE GREEN but was replaced in the 1950s by an alloy arm containing the additional destination of RAYNE. The restoration legend reverts to the original legend along with banded livery.



**The milepost** is located on the east side of the A131 at High Garrett just short of the Stisted turning.





# CHAIRMAN'S CHARITIES



Councillor Frankie Ricci  
Chairman 2016/17  
Braintree District Council



## Essex Search and Rescue



Registered Charity No. 1096661

[www.essexsearchandrescue.org.uk](http://www.essexsearchandrescue.org.uk)

Essex Search and Rescue (Essex SAR) is a voluntary organisation which provides an immediate response to reports from Essex Police that a vulnerable/high risk person has gone missing. The service is available 24 hours a day, 365 days a year and in all weather conditions.

There are no restrictions as to whom the team will search for; these vulnerable people can include the young and the elderly and those who have mental health conditions, dementia, diabetes, severe medical conditions or be at risk of suicide. Over 2000 people a year go missing in Essex and it is the Essex SAR's mission to assist in finding these people and removing them from harm's way.

## Witham, Halstead and Braintree Home-start



Registered Charity No. 1102586

[www.essexinfo.net/home-start-witham-braintree-and-halstead](http://www.essexinfo.net/home-start-witham-braintree-and-halstead)

Home-Start is a voluntary organisation which is committed to promoting the welfare of families with at least one child under five years of age. Volunteers offer regular support, friendship and practical help to families under stress, in their own homes, helping to prevent family crisis and breakdown. The scheme also runs three Family Groups in Witham, Braintree and Halstead, which are supported by a Co-ordinator and a trained Play Leader.



Please recycle this when you have finished with it.



**SATURDAY**  
**19th November 2016**  
FREE WINTER WEDDING  
**OPEN DAY**  
10 am – 4 pm



Wedding prices start from  
**£149**

## Get married at the beautiful Town Hall

Braintree Town Hall provides a memorable setting for your wedding or civil partnership. Steeped in history the 90 year old Neo-Georgian building is grade II-listed.

The interiors provide a stunning backdrop for photographs from the sweeping staircase, impressive stained glass window; crafted stone pillars to the ceiling art located in the Council Chamber and the Chairman's room.

There are a variety of rooms to hire, catering for all wedding sizes and budgets.

*"Thank you for such a brilliant start to our married life, the day was perfect. We had so many lovely comments about how wonderful the venue was for our ceremony".*

Orla & Neil de Bank

Call us today to start creating your perfect wedding.

**Telephone: 01376 557776**

**Email: [weddings@braintree.gov.uk](mailto:weddings@braintree.gov.uk)**

**[www.braintree.gov.uk/townhall](http://www.braintree.gov.uk/townhall)**

