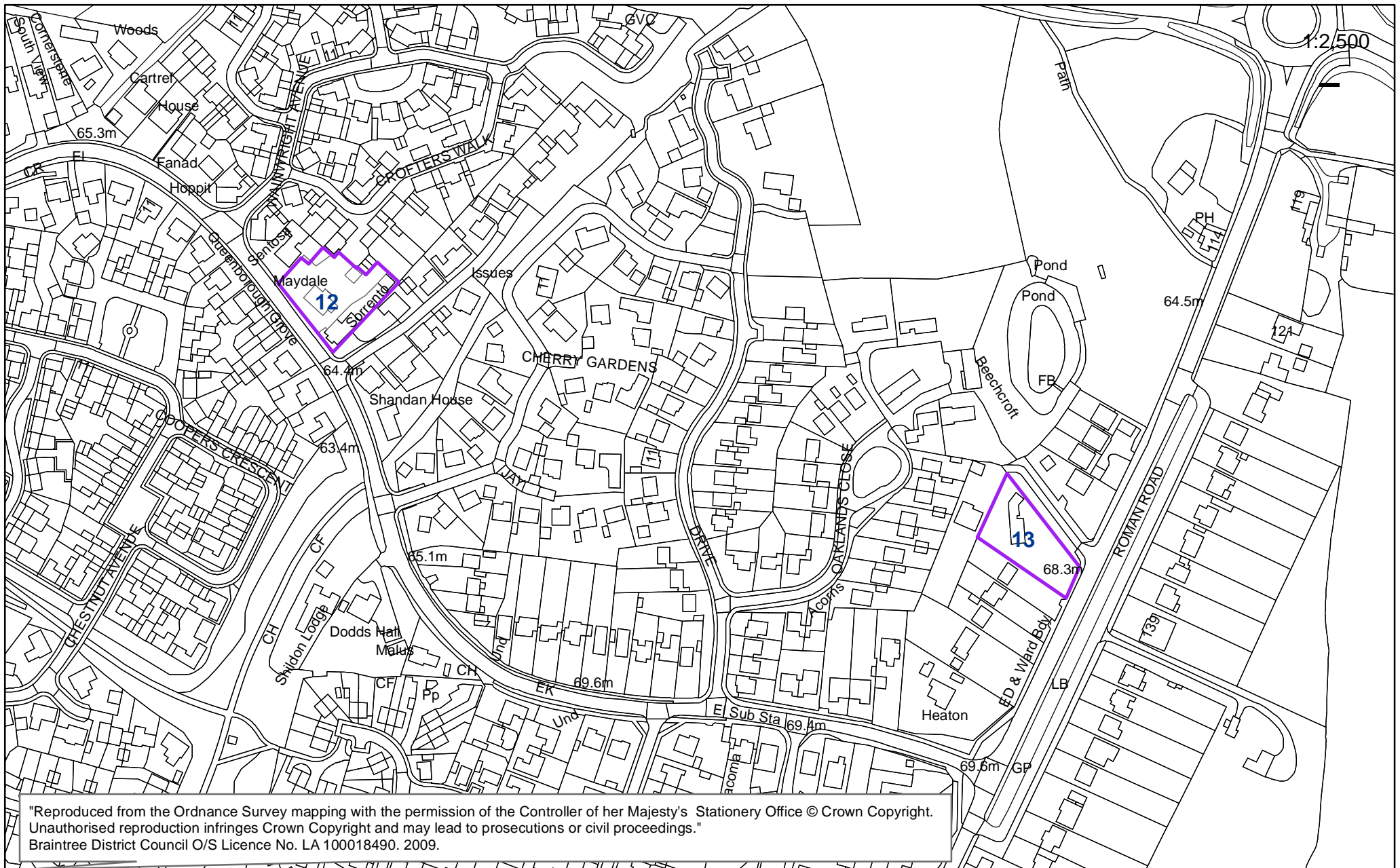


**RESIDENTIAL LAND AVAILABILITY**  
**PARISH: GREAT NOTLEY AND BRAINTREE WEST**

**DWELLING SITES AS AT: 31.3.10**

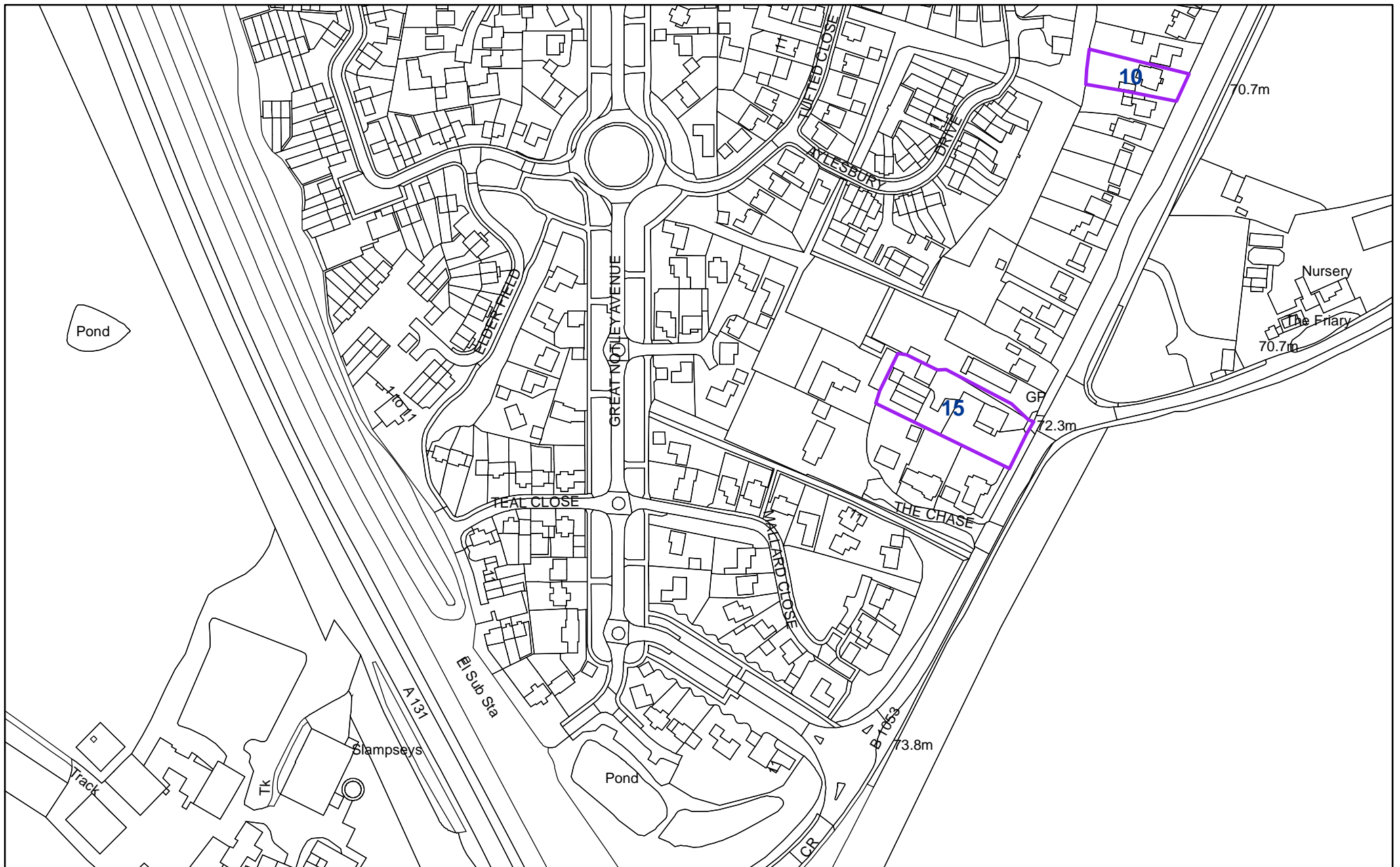
GNGV phase Map site ref. no.	Location of site	Planning applicator reference where relevant	Estimated dwelling sites without planning permission	Dwelling sites with planning permission				Total all dwelling sites with planning permission	Sum total all dwelling sites with or without planning permission	According to PDL definition as at April 2010: Dwelling plots on		According to revised PDL definition as at June 2010: Dwelling plots on	
				Total site capacity (including built)	Dwellings not started		Dwellings under construction			Previously developed land	Greenfield	Previously developed land	Greenfield
					With outline plg.perm.	With full plg.perm.							
2	Plot 1 Land r/o 190-192 London Rd	1653/04		1			1	1	1	0	0	1	
7	Part grounds Foxgloves 186 London Rd	308/07		2			1	1	1	0	0	1	
10	198 London Road	121/07		1			1	1	1	0	1	0	
12	Land at Maydale Queenborough Lane	237/07		3		2	2	2	2	0	1	1	
13	136 London Road	2630/07		2	2		2	2	2	0	0	2	
14	The Laurels 180 London Road	1629/09		4	4		4	4	4	0	1	3	
15	Highfield 224 London Road	421/08		2	2		2	2	2	0	1	1	
16	176 & land rear of 174 & 176 London Rd	1038/09		3		3	3	3	3	0	1	2	
<b>Gross total</b>			<b>0</b>	<b>8</b>	<b>3</b>	<b>5</b>	<b>16</b>	<b>16</b>	<b>16</b>	<b>0</b>	<b>5</b>	<b>11</b>	
<i>Losses</i>													
12	<i>Land at Maydale Queenborough Lane</i>	<i>237/07</i>		3			-1	-1	-1	0	-1	0	
13	<i>136 London Road</i>	<i>2630/07</i>		2	-1		-1	-1	-1	0	-1	0	
14	<i>The Laurels 180 London Road</i>	<i>1629/09</i>		4	-1		-1	-1	-1	0	-1	0	
15	<i>Highfield 224 London Road</i>	<i>421/08</i>		2	-1		-1	-1	-1	0	-1	0	
16	<i>176 &amp; land rear of 174 &amp; 176 London Rd</i>	<i>1038/09</i>		3		-1	-1	-1	-1	0	-1	0	
<b>Total losses</b>			<b>0</b>	<b>-3</b>	<b>-1</b>	<b>-1</b>	<b>-5</b>	<b>-5</b>	<b>-5</b>	<b>0</b>	<b>-5</b>	<b>0</b>	
<b>Net total</b>			<b>0</b>	<b>5</b>	<b>2</b>	<b>4</b>	<b>11</b>	<b>11</b>	<b>11</b>	<b>0</b>	<b>0</b>	<b>11</b>	



12 - Land at Maydale, Queenborough Lane, Gt Notley and Braintree West  
 13 - 136 London Rd

**Key**

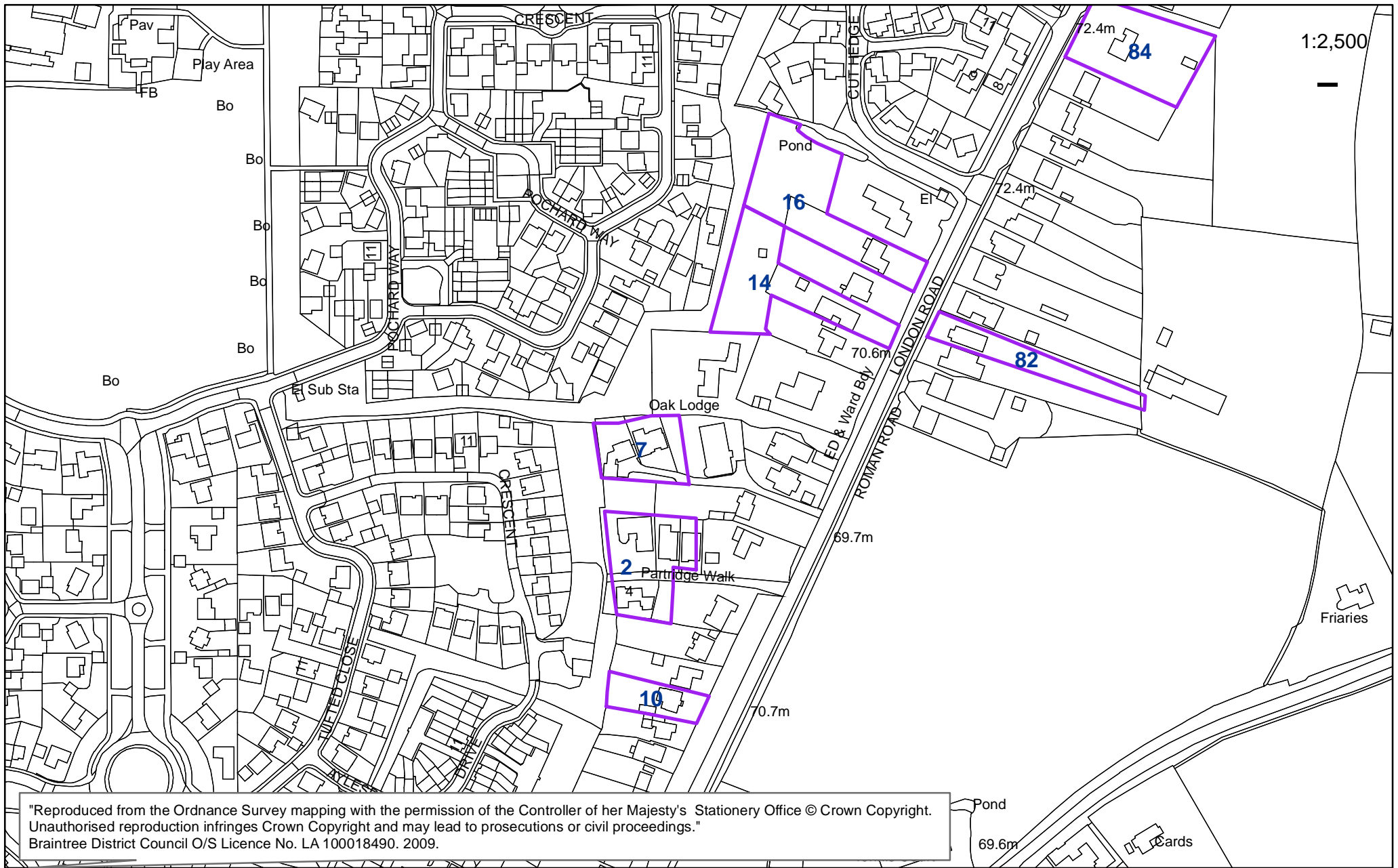
- SITES WITHOUT PLANNING PERMISSION
- SITES WITH PLANNING PERMISSION



15 - Highfield, 224 London Road, Great Notley and Braintree West

1:2,500

"Reproduced from the Ordnance Survey mapping with the permission of the Controller of her Majesty's Stationery Office © Crown Copyright. Unauthorised reproduction infringes Crown Copyright and may lead to prosecutions or civil proceedings."  
Braintree District Council O/S Licence No. LA 100018490. 2009.



- 2 - Plot 1 Land r/o 190-192 London Rd, Gt Notley and Braintree West
- 7 - Part grounds Foxgloves, 186 London Rd
- 10 - 198 London Rd
- 14 - The Laurels 180 London Rd
- 16 - 176 & land rear of 174 & 176 London Rd

**Key**

- SITES WITHOUT PLANNING PERMISSION
- SITES WITH PLANNING PERMISSION