

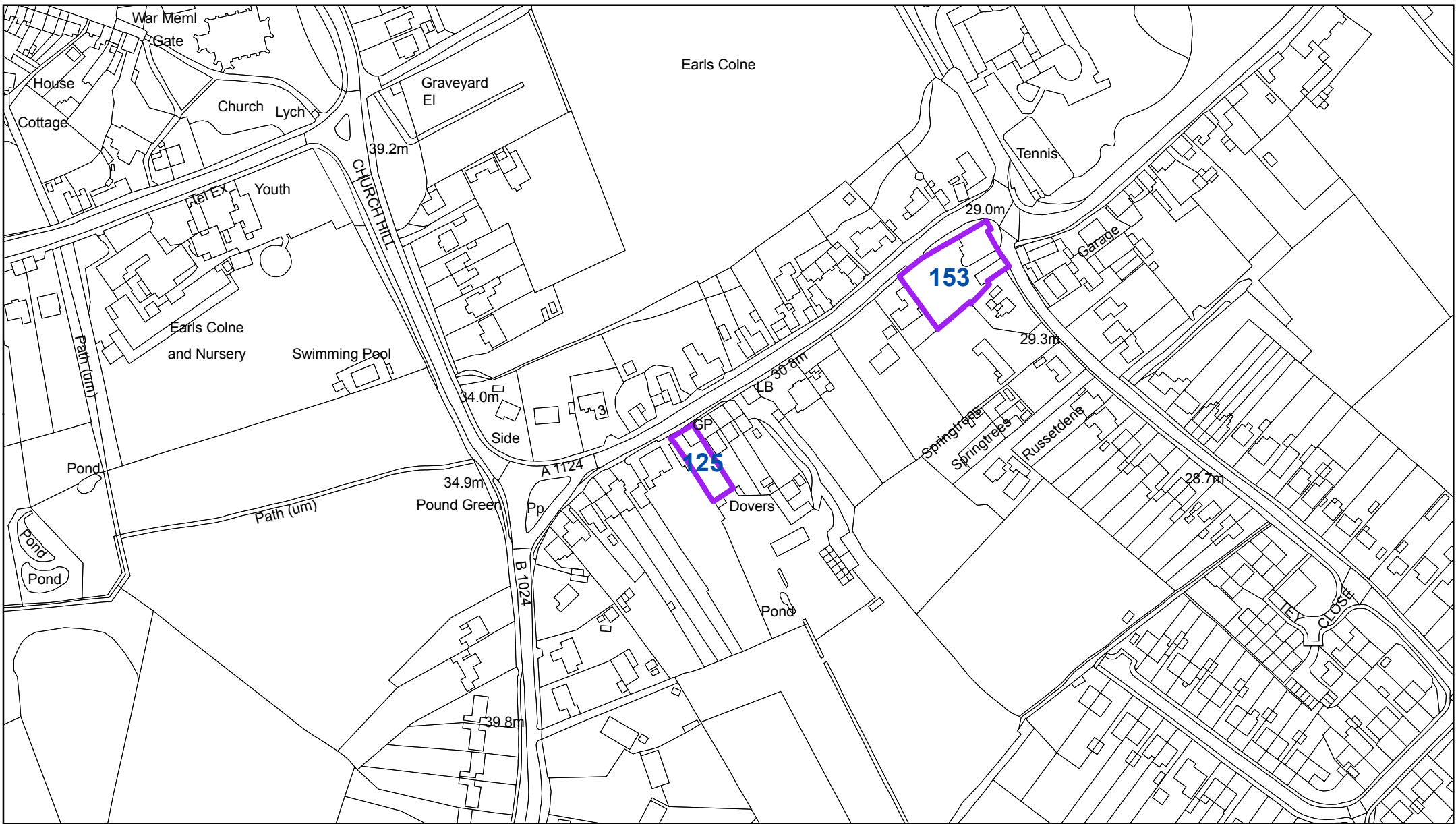
RESIDENTIAL LAND AVAILABILITY
PARISH: EARLS COLNE

DWELLING SITES AS AT:

31.3.11

According to revised PDL
definition as at June 2010:
Dwelling plots on

Map site ref. no.	Location of site	Planning application reference where relevant	Estimated dwelling sites without planning permission	Dwelling sites with planning permission				Total all dwelling sites with planning permission	Sum total all dwelling sites with or without planning permission	Previously developed land	Greenfield 0
				Total site capacity (including built)	Dwellings not started		Dwellings under construction				
					With outline plg.perm.	With full plg.perm.					
125	16 Upper Holt Street	1389/09		1			1	1	1	0	1
152	Whitegates 11 York Road	686/09		1		1		1	1	1	0
153	Oxford House Upper Holt Street	1195/09		1		1		1	1	1	0
155	Land at the rear of Halstead Road		15					0	15	0	15
156	Telephone Exchange High Street		5					0	5	5	0
157	Land at Ernalds Close		2					0	2	0	2
Gross total			22		0	2	1	3	25	7	18
<i>Losses</i>											
<i>Total losses</i>			<i>0</i>		<i>0</i>	<i>0</i>	<i>0</i>	<i>0</i>	<i>0</i>	<i>0</i>	<i>0</i>
Net total			22		0	2	1	3	25	7	18



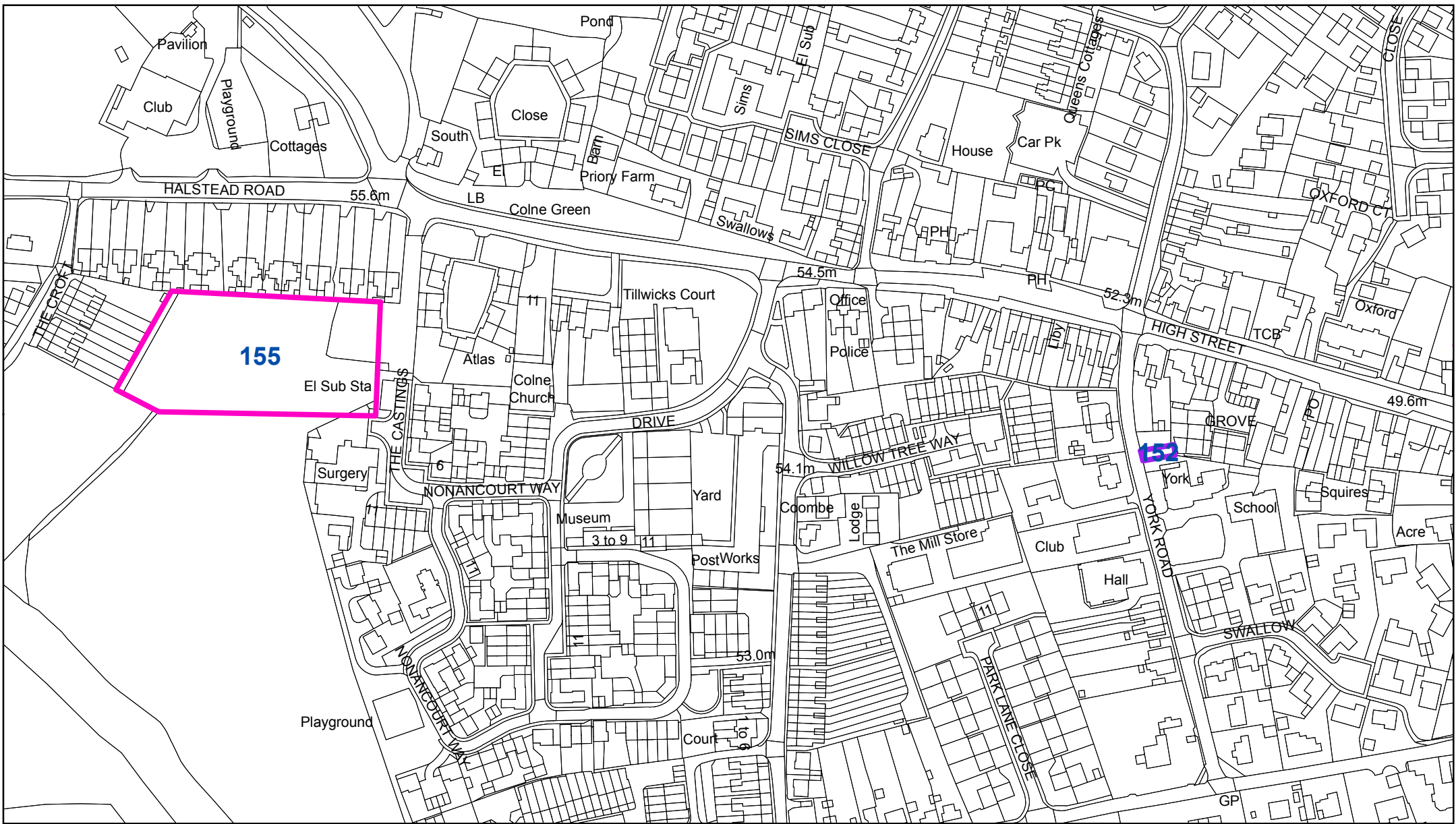
Earls Colne:
125 - 16 Upper Holt Street

"Reproduced from the Ordnance Survey mapping with the permission of the Controller of her Majesty's Stationery Office © Crown Copyright. Unauthorised reproduction infringes Crown Copyright and may lead to prosecutions or civil proceedings."
Braintree District Council O/S Licence No. LA 100018490. 2011

Key

- Sites with planning permission
- Sites without planning permission





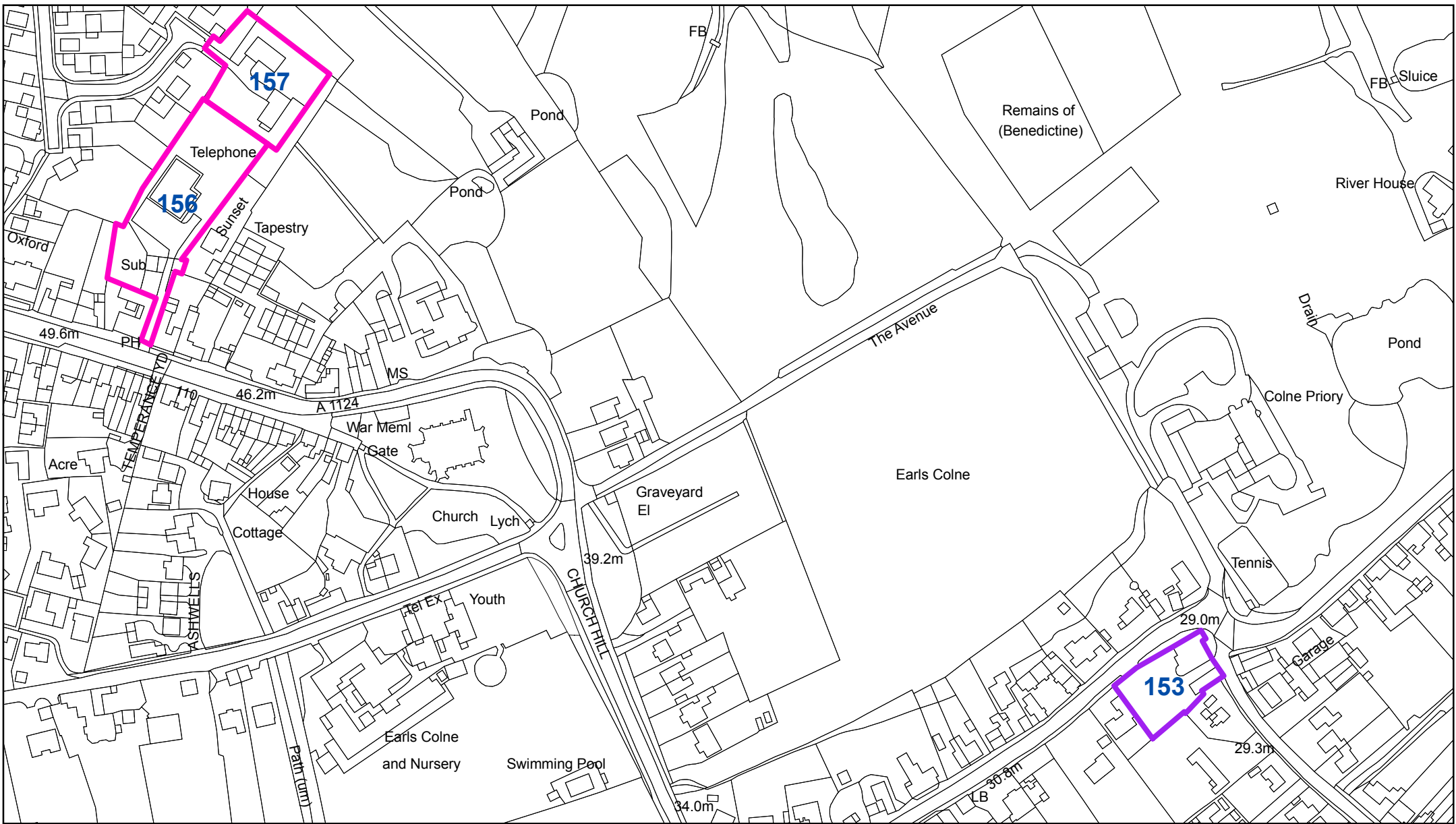
Earls Colne:
 152 - Whitegates, 11 York Road
 155 - Land at the rear of Halstead Road

Key

- Sites with planning permission
- Sites without planning permission



1:2,500



Earls Colne:
 153 - Oxford House, Upper Holt Street
 156 - Telephone Exchange High Street
 157 - Land at Ernalds Close

"Reproduced from the Ordnance Survey mapping with the permission of the Controller of her Majesty's Stationery Office © Crown Copyright. Unauthorised reproduction infringes Crown Copyright and may lead to prosecutions or civil proceedings."
 Braintree District Council O/S Licence No. LA 100018490. 2011

Key

- Sites with planning permission
- Sites without planning permission



1:2,500