

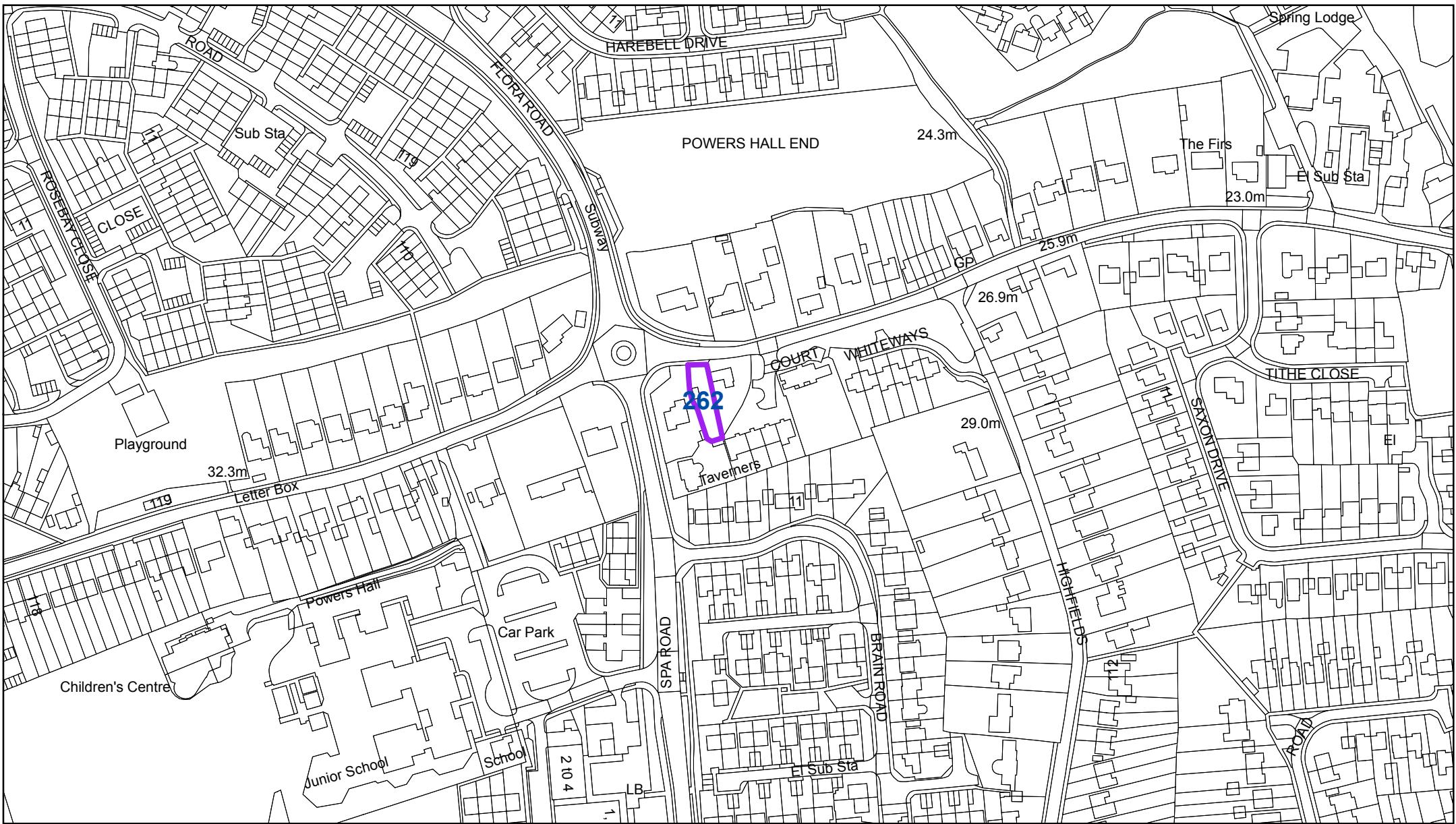
RESIDENTIAL LAND AVAILABILITY

DWELLING SITES AS AT: 31.3.11

According to revised PDL definition as at June 2010:
Dwelling plots on

PARISH: WITHAM WEST WARD

Map site ref. no.	Location of site	Planning application reference where relevant	Estimated dwelling sites without planning permission	Dwelling sites with planning permission			Total all dwelling sites with planning permission	Sum total all dwelling sites with or without planning permission	Previously developed land	Greenfield
				Total site capacity (including built)	Dwellings not started					
				With outline plg.perm.	With full plg.perm.	Dwellings under construction				
262	48 Powers Hall End	1290/10				1	1	1	0	1
289	Land at Blunts Hall Road		40				0	40	0	40
Total			40	0	1	0	1	41	0	41



Witham West:
262 - 48 Powers Hall End

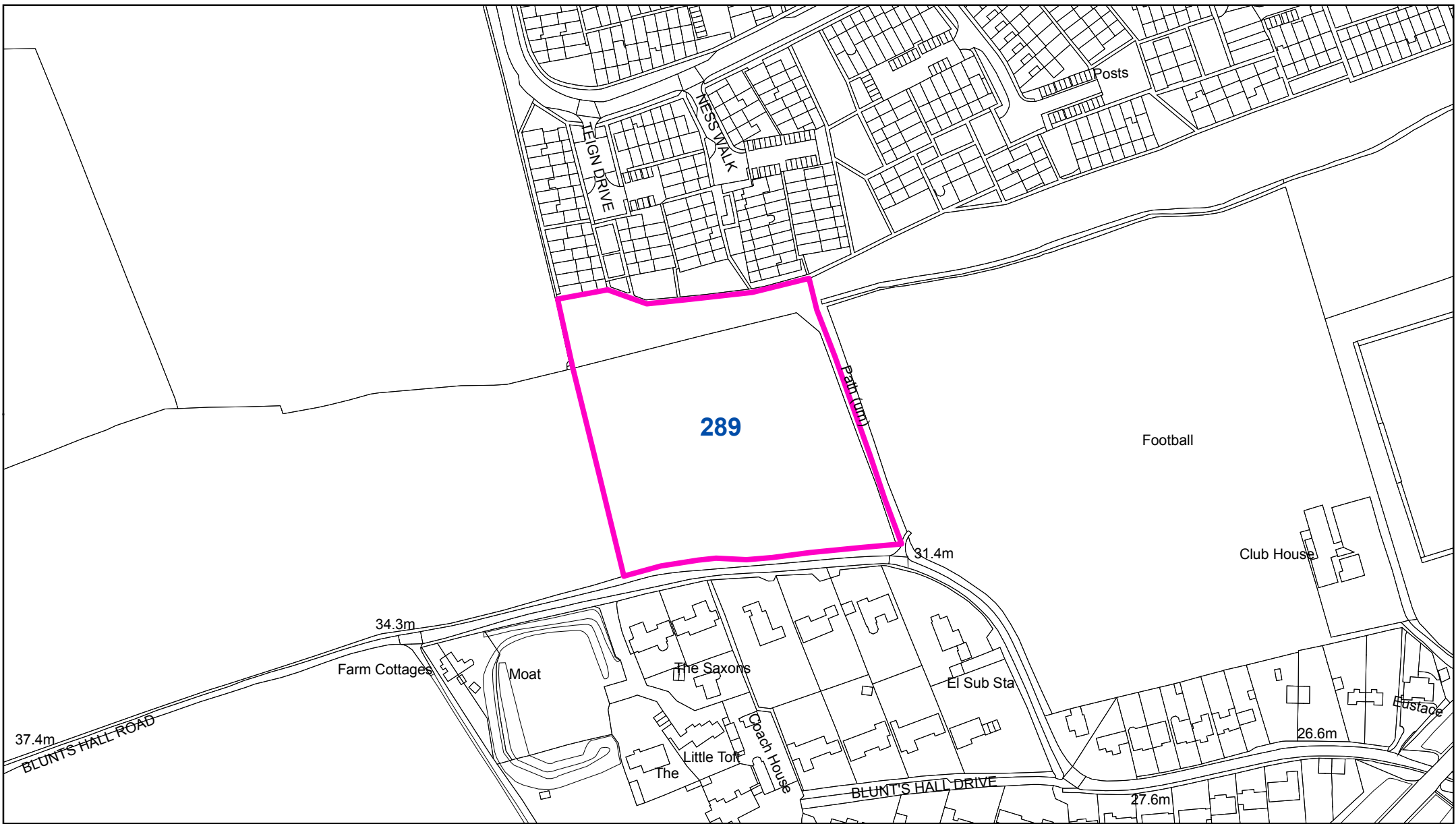
"Reproduced from the Ordnance Survey mapping with the permission of the Controller of her Majesty's Stationery Office © Crown Copyright. Unauthorised reproduction infringes Crown Copyright and may lead to prosecutions or civil proceedings."
Braintree District Council O/S Licence No. LA 100018490. 2011

Key

- Sites with planning permission
- Sites without planning permission



1:2,500



Witham West:
289 - Land at Blunts Hall Road

"Reproduced from the Ordnance Survey mapping with the permission of the Controller of her Majesty's Stationery Office © Crown Copyright. Unauthorised reproduction infringes Crown Copyright and may lead to prosecutions or civil proceedings."
Braintree District Council O/S Licence No. LA 100018490. 2011

Key

- Sites with planning permission
- Sites without planning permission

