

**CHELMSFORD AND BRAINTREE GROWTH AREA FUNDING – GOVERNANCE  
ARRANGEMENTS**

**Agenda Item 6(b)**

**Contact Details:-** Paul Munson  
**Designation:-** Deputy Director, District Development  
**Ext. No:-** 2560  
**E Mail Address:-** paul.munson@braintree.gov.uk

**Background Papers:-** None  
**Financial Implications:-** As set out in report  
**Equalities Implications:-** None  
**Legal Implications:-** None  
**Options:**  
1. To agree the governance arrangements as set out in the report  
2. To propose alternative governance arrangements  
**Risks:** Failure to agree appropriate governance arrangements may put funding at risk

**EXECUTIVE SUMMARY**

It is proposed to establish a Growth Fund Board jointly with Chelmsford BC and Essex CC to make strategic decisions on the growth area funding. BDC will be represented on this Board at member level by the Leader of the Council and the Cabinet member for Enterprise and Infrastructure.

It is also proposed to establish a Braintree Programme Board to oversee the Braintree District elements of the growth funding in more detail. It is suggested that membership of the Board includes the Cabinet member, three local members with representation from the business community, the local community and Essex County Council

**DECISION**

To agree the governance arrangements for growth area funding as set out in this report

## **CHELMSFORD AND BRAINTREE GROWTH AREA FUNDING – GOVERNANCE ARRANGEMENTS**

### **Purpose of Report**

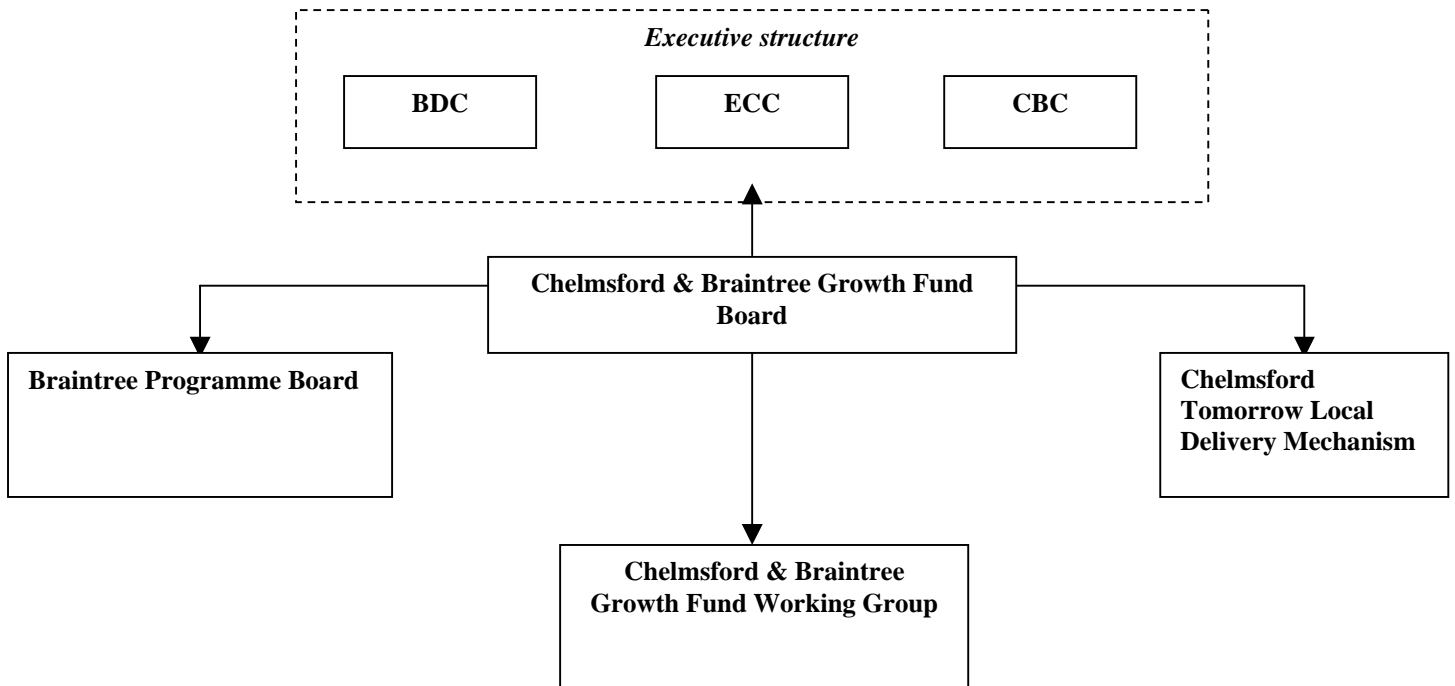
1. To set out the arrangements for taking forward the governance and administration of the growth area funding.

### **Background**

2. The Government announced on the 4<sup>th</sup> December 2007 that the bid for growth area funding submitted jointly between Braintree District and Chelmsford Borough Councils had been successful. At this stage the award is provisional subject to confirmation of the growth area being extended to include Chelmsford through the East of England Plan.
3. The award for Chelmsford and Braintree is £4,354,053 capital/£252,890 revenue for 2008/9 with an indicative allocation of £6,095,674 capital/£373,488 revenue for 2009/10 - 2010/11.
4. The award follows the submission of a programme of development for Braintree and Chelmsford in October 2007. The programme of development is intended to set out the action that is required to deliver the housing required by the East of England Plan and the infrastructure that is required to support it. The funding is therefore to be used for projects and infrastructure that will deliver this growth. The total bid was for £29.2m, therefore there will be a need to prioritise the projects that were included in the bid to fit the funding available.
5. For Braintree District the type of projects included in the bid were:
  - A water cycle study
  - A rail improvement study
  - Town centre regeneration
  - Acquisition of employment land
  - Green Space Improvements
  - Cycleway network improvements
6. The Government has advised that the funding will not be ring-fenced and it will be for local partnerships to determine how the funding is used to deliver the growth targets.
7. It is now necessary to establish formal arrangements with Chelmsford Borough Council to determine the allocation of funding to the various projects and to oversee the delivery of growth.

8. Officers of both authorities and Essex County Council have met with GO-East to discuss the arrangements for taking forward the funding, its apportionment and governance arrangements.
9. At the moment it is not possible to give an indication of how the funding may be apportioned between the two authorities. GO-East has indicated that the overall level of funding that was awarded was not based on individual projects but on the overall outcomes. They expect that authorities will agree criteria for prioritising projects and that the criteria should focus on deliverability and outcomes. The programmes of development (POD) will need to be refreshed during 2008 and the refreshed PODs will form the basis of the allocation of funding for 2009/10 and 2010/11. There is further funding to be made available and this is likely to be awarded to those authorities that have demonstrated that they are able to deliver projects during 2008/9.
10. The onus is therefore on Braintree and Chelmsford to agree the criteria for prioritising projects and the apportionment of funding. Failure to do so will jeopardise the opportunity to secure additional funding through the refreshed bids. Officers are therefore seeking to agree a template which can be used to evaluate the projects and which can be used as a basis establishing priorities. There will then need to be a joint meeting at member level to agree the apportionment of the funding.
11. Chelmsford and Essex already have joint meetings at a senior level to oversee Chelmsford's growth agenda (these are referred to as five-a-side meetings). The proposal is to use this meeting as a model for a partnership to oversee the growth area funding by establishing a new Growth Fund Board. It is proposed to set up the first meeting of this Board in late April or early May. The Board would be supported by a joint officer working group.
12. We also need to establish governance arrangements to deal with the Braintree element of the funding. Chelmsford already has a local delivery mechanism that they will be using called Chelmsford Tomorrow. It is therefore proposed that a Braintree Programme Board be established to oversee the Braintree District elements of the growth area funding. It is suggested that the membership of the Programme Board should include the Cabinet member for Enterprise and Infrastructure, three local members and a representative from each of the business community, the local community and Essex County Council.
13. The proposed structure for the governance arrangements is set out in the attached diagram. These proposals were considered and agreed by the Braintree Local Committee on 20th February 2008.

## CHELMSFORD & BRAINTREE GROWTH FUND GOVERNANCE



### MEMBERSHIP

#### Growth Fund Board

<b>Braintree DC</b>	
Leader/ Cabinet Member	
Chief Exec/ Director	
Deputy Director	
<b>Chelmsford BC</b>	
Leader/ Cabinet Member	
Chief Exec/ Director	
Senior Manager	
<b>Essex County Council</b>	
Cabinet Member	
Director	
Senior Manager	

#### Braintree Programme Board

<b>Braintree DC</b>	
Cabinet Member for Enterprise and Infrastructure	
3 local members	
<b>Representative from business community</b>	
<b>Representative from local community</b>	
<b>Representative from Essex County Council</b>	

**Growth Fund Working Group**

<b>Braintree DC</b>	
Deputy Director	
Asset and Property Manager	
Economic Development Manager	
<b>Chelmsford BC</b>	
Senior Manager	
<b>Essex County Council</b>	
Growth Manager	
Principal Transportation Co-ordinator	