

**BRAINTREE DISTRICT STRATEGIC ASSESSMENT & ANNUAL PARTNERSHIP PLAN
(Braintree Crime & Disorder Reduction Partnership (CDRP))**

Contact Details:- Helena Goodwin
Designation:- Community Safety & Development Manager
Ext. No:- 2756
E Mail Address:- Helena.goodwin@braintree.gov.uk

Background Papers:-

Annual Partnership Plan 2008, Strategic Assessment 2008; Crime & Disorder Act Review – January 2006; Responsible Authority Group Minutes – May 2008; Local Area Agreement 2; Braintree District Council Local Area Agreement 2008; Delivering Safer Communities: A guide to effective partnership working, pg 128.

Financial Implications:- None

Equalities Implications:- None – equalities inclusive

Legal Implications:- Statutory Requirement

Options:

To support the decision made by the Responsible Authority Group (CDRP) agreeing the Annual Partnership Plan 2008.

Not to support the decision made by the Responsible Authority Group, or the Annual Partnership Plan 2008.

Risks:

The undertaking of the Strategic assessment and subsequent production of the Annual Partnership Plan is a statutory requirement. The timescales for undertaking both pieces of work is heavily reliant and resource intensive for the Community Safety & Development Manager. Currently the Strategic Assessment does not include all the data that Braintree District Council should include within the assessment. The assessment is required to contain not just crime and disorder data, but also data such as environmental, public needs and desires, including corporate information such as data resulting in Local Committee priorities etc. For an all encompassing and meaningful Strategic Assessment, data from Braintree District Council (and other partners) needs to be available and forthcoming.

EXECUTIVE SUMMARY

This report covers the following:-

- 1) A summary of the statutory requirements under the Crime & Disorder Act Review (January 2006);
- 2) The purpose of Strategic Assessments and Partnership Plans;
- 3) The current position and experiences regarding the production of the first Braintree District Strategic Assessment;
- 4) The future approach to Strategic Assessments;
- 5) The priority areas of the Braintree District Strategic Assessment
- 6) The Braintree District Annual Partnership Plan 2008.

DECISION

To support the decision made by the Responsible Authority Group (CDRP) agreeing the Annual Partnership Plan 2008.

BRAINTREE DISTRICT STRATEGIC ASSESSMENT & ANNUAL PARTNERSHIP PLAN (Braintree Crime & Disorder Reduction Partnership (CDRP))

1.0 Legislative Requirements

The Crime & Disorder Act Review 2006 brought in major changes to the way that the Crime & Disorder Partnerships across England and Wales were required to identify the priority themes for CDRPs to focus on.

Previously, three yearly audits of crime and disorder issues were undertaken, and a three year Community Safety Strategy was developed detailing the top priority issues and how these were going to be addressed by the CDRPs.

From 1st April 2008 the legislation saw the three yearly audits and Community Safety Strategy come to an end. The new requirements are for Strategic Assessments to be undertaken annually, which is to include not just crime and disorder data, but also data concerning quality of life issues. Subsequent Partnership Plans are to be written.

2.0 Purpose of Strategic Assessments

According to Home Office Guidance¹, Strategic Assessments:

- Drive the business of the CDRP strategy group meeting
- Aid and support strategic business planning and resource allocation
- Inform the CDRP strategy group of the issues likely to affect the partnership in the coming year and recommends which should be a priority
- Assists the agreement of partnership priorities.

3.0 Purpose of Partnership Plans

The Partnership Plans set out the key priorities for the area, based on the Strategic Assessment, and how the members of the CDRP will work together to reduce crime and associated issues in the area in the coming year. The Plan is subject to yearly review. The Plan needs to be approved by each of the statutory partners and a summary published by 1st April of each year.

4.0 Braintree CDRPs Approach

Collectively across Essex the twelve CDRPs are working with ECC in developing a project to agree a common approach (including questions) to carrying out consultation with the public for the Strategic Assessments across Essex in 2008-09 to achieve greater continuity. This project is unlikely to be fully up and running until the latter part of 2008/09.

Previously, the undertaking of the former three year audit was always outsourced to a consultant due to capacity and capability issues within the CDRP. Hence, for the first and second Braintree District Strategic Assessments, the Braintree District CDRP has agreed to fund the outsourcing of the statutory work to consultants.

¹ Delivering Safer Communities: A guide to effective partnership working, pg 128.

This year the consultant had problems with our Strategic Assessment in terms of the availability, quality, quantity and appropriateness of data from numerous agencies. As such, the first Braintree Strategic Assessment was not completed by 1st April 2008. This had a knock effect with the timescale for production and agreement of the Annual Partnership Plan for Braintree. However, Braintree was still the first CDRP to publish the summary of the Strategic Assessment and Partnership Plan in Essex.

5.0 Future Approach

The proposals for the future Countywide approach are as follows:-

- i. To agree a common approach (including questions) to carrying out consultation with the public for the Strategic Assessments across Essex in 2008-09 to achieve greater continuity. (With the Crime and Disorder Network Executive to be responsible for developing these. Noting that this needs to be linked into wider discussions about consultation as part of the overall LAA).
- ii. That CDRP Partnership Plans are regularly reviewed as / when priorities evolve.
- iii. For these findings, particularly regarding analytical capability and capacity, to be fed into the discussions about the development of the Information Sharing Proposal (at the October meeting of Safer Essex). In order to assist with SA development from 2009/10 and beyond.

6.0 Priorities resulting from the Braintree District Strategic Assessment

The Braintree Strategic Assessment did not identify any new priority themes for the Braintree District.

The Partnership Structure has been developed taking into account issues that require dedicated special resources and to ensure that our CDRP continues to be an effective, proactive and well respected partnership.

The following are the areas that have been highlighted through the Strategic Assessment and also form the Essex LAA2. These priorities form the Annual Partnership Plan (see Annex I), with the continuation and creation of existing and new innovative projects and ways of working we will continue in being successful in reducing crime and disorder across our District. The plan and priority themes have been agreed by the Braintree District Responsible Authority Group (RAG). The Priorities for the Braintree District (not in any particular order), are as follows:-

- **Youth Offending & Disorder (Prolific & Priority Offending & Young People as Victims of Crime)**
- **Anti-Social Behaviour (including Criminal Damage)**
- **Substance Related Crime & Disorder (Alcohol & Drugs)**
- **Hate Crime (Racial, Homophobic, Faith Transphobic, Faith Related, Sectarian, Disabilist)**
- **Domestic Abuse**
- **Road Safety**

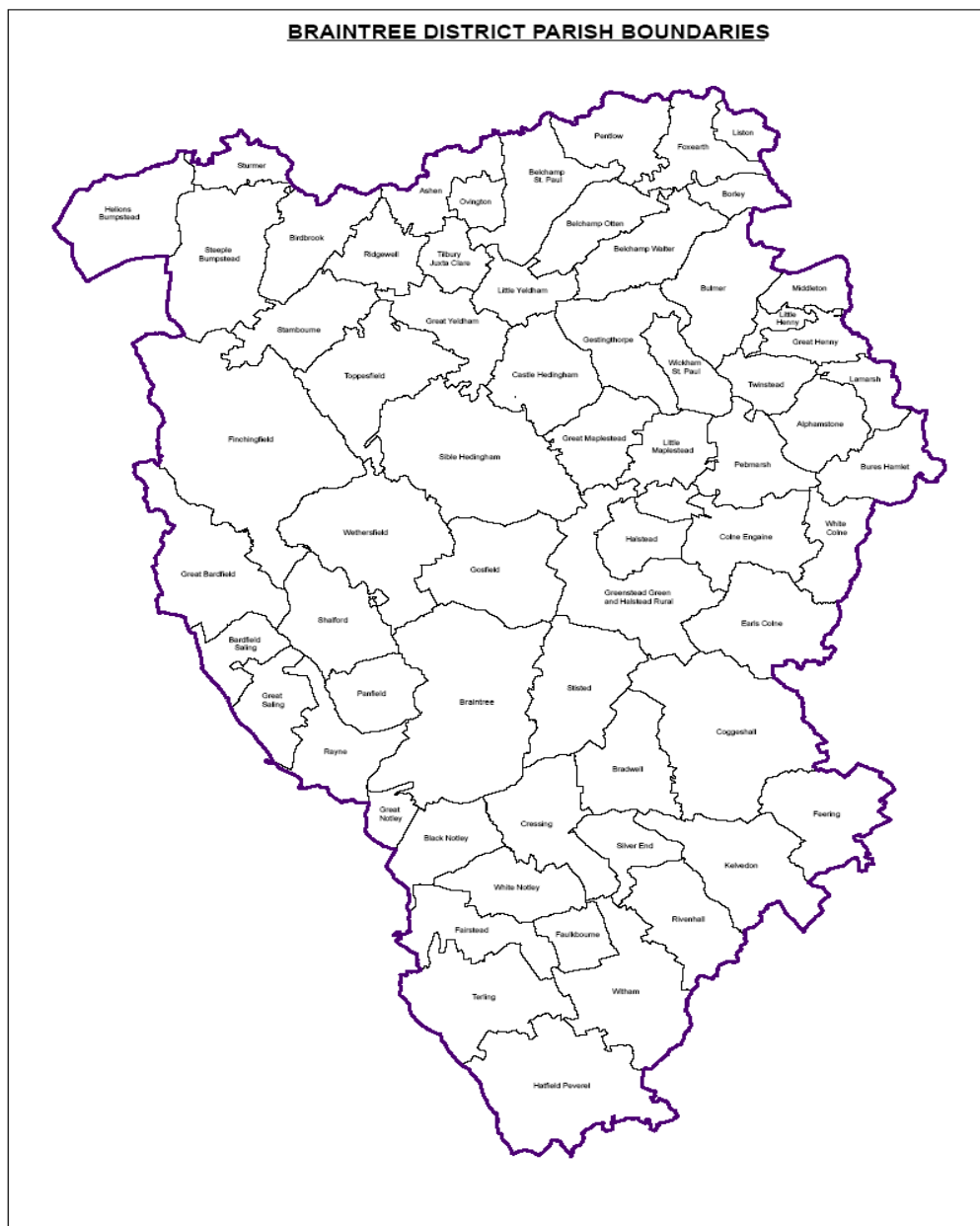
7.0 Conclusion

The Braintree District Crime & Disorder Reduction Partnership remains one of the highest profile and effective partnerships across Essex. The Strategic Assessment did not raise any priority themes that the partnership has been addressing, hence, the focus of resources are being allocated to the right areas. The Partnership has always taken the strategic approach and decision to work on longer term projects and initiatives maximising and mainstreaming resources. This is evident by the continued reduction in end of year crime and disorder statistics that are published by the Home Office on a yearly basis. Hence, it is recommended that Cabinet support the Braintree District Annual Partnership Plan 2008.

ANNEX I

Crime and Disorder Reduction In the Braintree District

BRAINTREE DISTRICT Annual Partnership Plan



*Reproduced from the Ordnance Survey mapping with the permission of the Controller of Her Majesty's Stationery Office © Crown Copyright. Unauthorised reproduction infringes Crown Copyright and may lead to prosecutions or civil proceedings. Braintree District Council O/S Licence No. LA 100018490. 2007.

Produced by the
CRIME and DISORDER REDUCTION PARTNERSHIP

www.braintree.gov.uk

2008 – 2011



Braintree District

**Community
Safety**

Partnership

1. EXECUTIVE SUMMARY

The **Strategic Assessment (SA)** for the Braintree District was undertaken March 2008. A comprehensive analysis of crime, disorder and community safety data across the Braintree District has been undertaken. This included consultation with the public and a wide range of organisations and other agencies representing our communities. Subsequently, this document called the **Annual Partnership Plan (APP)** has been written based upon the priorities identified through the Strategic Assessment which will drive forward our actions to reduce crime and disorder.

The Strategic Assessment and Annual Partnership Plan will be **renewed each year** until 2011 to reflect changing priorities, key issues and crime trends within our communities.

The Annual Partnership Plan will help the Crime Reduction Partnership and our partner agencies achieve its objectives. The actions will be regularly reviewed, updated and added to as the three-year life of the Partnership Plan unfolds.

Consultants (Priority Research) were engaged to undertake the first Strategic Assessment on behalf of the BDCDRP.

The following are areas that have been highlighted through the SA and also from the Essex LAA2. These have been agreed as the Priorities for the Braintree District (not in any particular order).

Youth Offending & Disorder (Prolific & Priority Offending & Young People as Victims of Crime)

Anti-Social Behaviour (including Criminal Damage)

Substance Related Crime & Disorder (Alcohol & Drugs)

Hate Crime (Racial, Homophobic, Faith Transphobic, Faith Related, Sectarian, Disabilist)

Domestic Abuse

Road Safety

2. AIM OF STRATEGIC ASSESSMENT

The aim of this Strategic Assessment is to identify and explore the current and future gaps and risks that impact upon the Braintree District and the communities it serves linked to crime, anti-social behaviour, substance misuse and behaviour adversely affecting the environment. The Strategic Assessment will enable the Braintree District Crime & Disorder Reduction Partnership (BDCDRP) and its Partner agencies various options for enforcement, intervention, education, prevention and public reassurance.

A significant part of this Strategic Assessment is the development of a comprehensive analysis of community safety related issues and how these link to our partner agencies' most recent crime data, performance and service plans. This will provide a more comprehensive and holistic partnership-focussed approach to tackling crime, reassurance, anti-social behaviour, substance misuse and behaviour which adversely affects the environment. This will enable the BDCDRP to review the effectiveness of current priorities, strategies and action plans, and provide a detailed focus and direction throughout the time frame of this document.

3. MISSION STATEMENT

This Strategic Assessment and Annual Partnership Plan were developed with the following mission in mind:

“To take a lead in making the Braintree District even safer and to help people feel safe, by reducing crime and disorder and the related health, economic and social costs of crime”

4. PURPOSE

The development of robust, co-ordinated plans for tackling crime and disorder originates from a combination of local and national initiatives. Locally, agencies have recognised for some time the need to address the issues which often feature top of the list of public concerns. This document is about performance and intelligence led information, analysis and data that inform Chief Officers from the Council, Police, County Council, Primary Care Trust and Fire & Rescue to identify neighbourhood priorities within the Braintree District. This will provide the foundation for the Partnership Plan that will set out how neighbourhood priorities will be met.

Ultimately the **purpose** of this document is to make the Braintree District an even safer place to live, work, develop a business and visit.

5. LOGOS & ACKNOWLEDGMENTS



On behalf of Braintree District Council, Essex Police Central Division (Braintree District), Essex County Council, Mid Essex Primary Care Trust and Essex Fire & Rescue Service we would like to take this opportunity to gratefully thank all our partner agencies and individual staff who gave their assistance, support, background information and statistics to aid the production of this document. We look forward to the future of sustained partnership working that will make Braintree an even safer place than it already is.

Charmaine Dean
Head of Community Services
Braintree District Council

Alan Gooden
District Commander (Braintree District)
Essex Police

John Symonds
Mid Essex Area Coordinator
Essex County Council

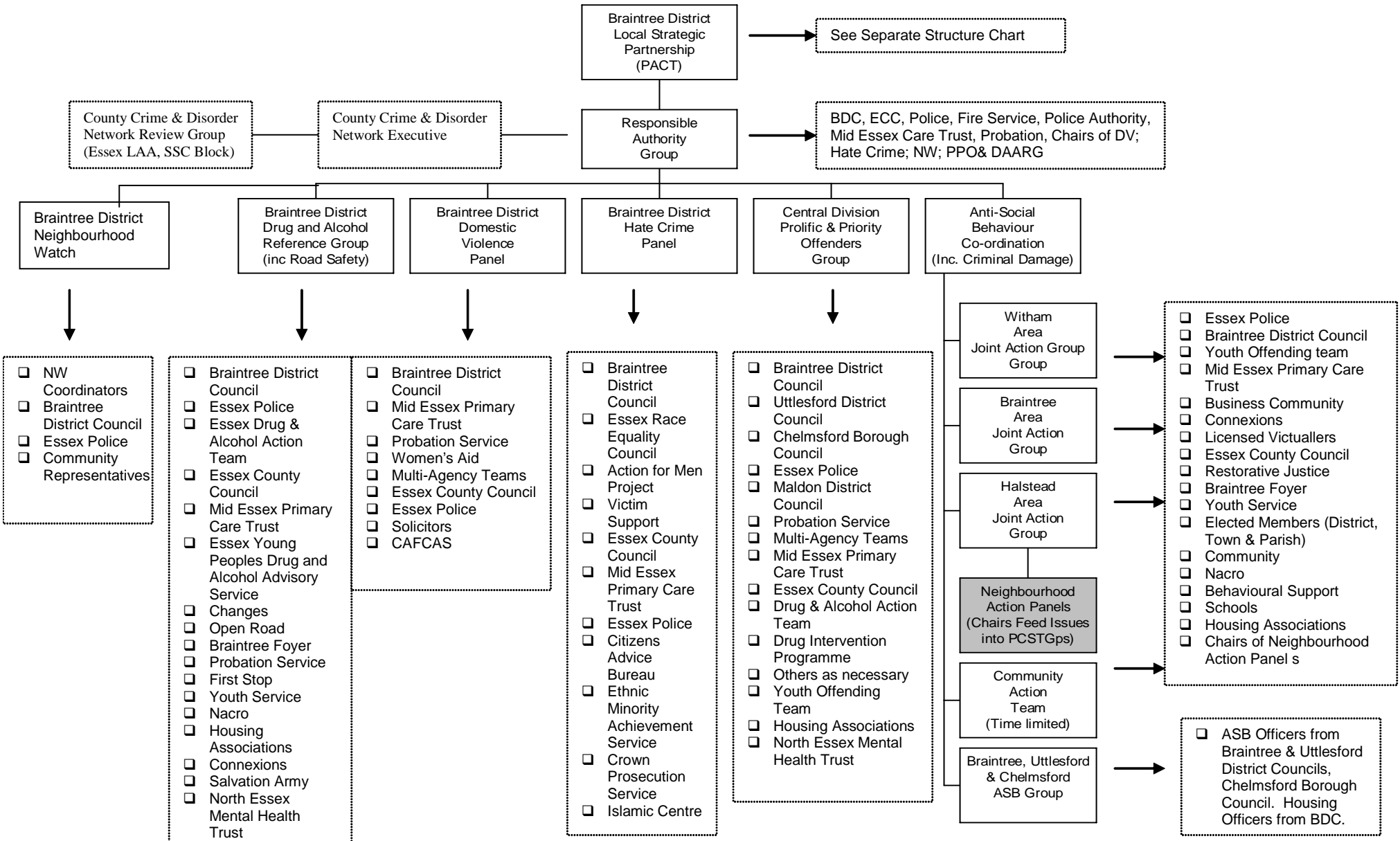
Graham Seward
Senior Health Improvement Manager
Mid Essex Primary Care Trust

Bill Secombe
Braintree Divisional Commander
Essex Fire & Rescue Service

Janie Siggers
Elected Member
Essex Police Authority

7. CRIME & DISORDER REDUCTION PARTNERSHIP STRUCTURE

BRAINTREE DISTRICT COMMUNITY SAFETY PARTNERSHIP (CDRP) STRUCTURE CHART 2008



Other Partners Attend Core Partnership Meetings as Needed / Appropriate

Allocation of Area Based Grant (2008 – 2001) in order to meet the LAA2 Targets and Braintree District Priorities.

BRAINTREE DISTRICT CDRP Spending Plan 2008.09

Proposed CDRP Funding - 2006/2007																
No.	Project	Type of Activity (Prevention, Education, Enforcement, Consultation)	Agreed	LAA Priorities & Contribution to Targets	Aim	Revenue Project Costs (REVISED)	Projects involving other CDRPs / Partnerships	District Coverage (Wards)	ADDITIONAL BCU (£50,092 BD Allocation)	FUNDING Police Authority (ALLOCATION £6,749)	STREAMS *Partnership Pot	EDAP	(Ring Fenced Police HQ (Essex Watch))	Other Funding	Comments & Outcomes	LEAD Officer/Agency
						£130,008			£80,798	£6,749	£23,500	£3,720	£5,000			
Priority Funding:																
1	Prevention & Education Officer Post (Based at BDC, Post renamed and re-recruited for in Oct 2006 (ASB Group Work and covering Halstead Area)	Prevention, Education, Training & Consultation	Yes (Feb 08)	Priority 7 - Essex is a safe place to live. NI 115 Substance misuse by young people. Local Indicator 7.1 Repeat incidents of domestic violence. NI 17 perceptions of ASB. Local Indicator 7.2 Feeling Safe. NI 20 Assaults with injury crime rate. NI 111 First time entrants to the Youth Justice System aged 10-17. NI 39 Rate of Hospital Admissions per 100,000 for alcohol related harm.	To Prevent, deter and provide education on ASB. Use of the ASB legislation. Post covers the geographical area of Braintree for implementation and across the District assisting with Project No.13 (Being Safe)	£25,000	Chelmsford & Uttlesford	All							In post from Sept 2006. Funded agreed until 31st March 2011 (Lesley Burch)	Jayne Wakeling, Community Safety BDC
2	Neighbourhood Watch Funding for achieving LAA Targets		Yes		To assist with delivering upon the LAA and specifically around aspects of Priority 11 & BCC (Crime Comparators).											Nigel Oldacre
3	Essex Watch Co-ordinator (Based at Police, Coordinator for the Braintree District, Part Time) Funded by Police 2007 onwards		Yes (EP Initiative)		Coordinating NW Coordinators. Producing and distributing Watchword (20,000 copies six monthly across the District). Actively getting Parish Councils involved in NW. Role expanded to Essex Watch		Braintree District CYPSP	All						£12,000	Police HQ Funded 2008/09	Alan Gooden Essex Police
4	Partnership Officer including DARG Coordinator (Part time Coordinator post based at Open Road, coordinates DARG plan, identifies gaps in service provision and implements projects)	Prevention, Education & Enforcement	Yes (May 08)	Priority 7 - Essex is a safe place to live. NI 115 Substance misuse by young people. Local Indicator 7.1 Repeat incidents of domestic violence. NI 17 perceptions of ASB. Local Indicator 7.2 Feeling Safe. NI 20 Assaults with injury crime rate. NI 111 First time entrants to the Youth Justice System aged 10-17. NI 39 Rate of Hospital Admissions per 100,000 for alcohol related harm.	Coordinate and support the work of the Braintree DAARG. Attend and represents the DAARG at the County DAAT meetings. Assists with delivery of LAA Priority No. 10. Mainstream DAARG activity with Colchester and Tending DAARGs where possible.		Colchester & Tending	All			£20,280	£3,720			Recruited 25th June 2008. Start date TBC (Kerry Hodge). Until 31st March 2011.	H Goodwin, Community Safety BDC
5	PPO (Prolific & Priority Offenders) & Hate Crime technical (Funded by Uttlesford & Maldon @ £5,000 each; Chelmsford & Braintree @ £7,500 each). Essex Police to fund additional post for the Central Division.	Prevention & Education	Yes (2005)	Priority 7 - Essex is a safe place to live. NI 18 Adult reoffending rates for those under Probation Supervision. Local Indicator 7.1 Repeat incidents of domestic violence. NI 17 perceptions of ASB. Local Indicator 7.2 Feeling Safe. NI 20 Assaults with injury crime rate.	Coordinates the work of the Central Local Action Team (CLAT) PPO Central Division Group - covers Braintree, Uttlesford, Maldon & Chelmsford). Works and coordinates all partners involved in PPO. Provides administrative support to PPO Gps and Hate Crime Panel.	£7,500	Uttlesford, Maldon & Chelmsford	All							Funded by Central Division CDRPs (Chelmsford & Braintree @ £7,500 each. Uttlesford & Maldon @ £5,000 each)	DI Moira Owers Essex Police
6	Crucial Crew	Prevention, Education & Consultation	Yes (Feb 08)	Priority 7 - Essex is a safe place to live. NI 115 Substance misuse by young people. Local Indicator 7.1 Repeat incidents of domestic violence. NI 17 perceptions of ASB. Local Indicator 7.2 Feeling Safe. NI 20 Assaults with injury crime rate. NI 111 First time entrants to the Youth Justice System aged 10-17. NI 39 Rate of Hospital Admissions per 100,000 for alcohol related harm.	Personal Safety Education on elevated topics for all Year 6 students (10/11 year olds) in Braintree District. Through interactive learning the children will leave the sessions with a range of easy to remember messages, which will prompt and guide them when faced with an emergency.	£6,000	CYPSP	All Where Secondary Sch's are located and children live.							1700 students annually (10 years). Teaching personal safety - Includes all costs of project, inc Coordination	Lesley Burch, Community Safety - BDC
7	Reality Roadshow	Prevention, Education & Consultation	Yes (Feb 08)	Priority 7 - Essex is a safe place to live. NI 115 Substance misuse by young people. Local Indicator 7.1 Repeat incidents of domestic violence. NI 17 perceptions of ASB. Local Indicator 7.2 Feeling Safe. NI 20 Assaults with injury crime rate. NI 111 First time entrants to the Youth Justice System aged 10-17. NI 39 Rate of Hospital Admissions per 100,000 for alcohol related harm. NI 195 Improved street & environmental cleanliness (Graffiti, debris, litter & fly posting)	Crime prevention and anti-social behaviour education for all Year 9 students (13/14 year olds), available to all the Secondary Schools within the Braintree District.	£5,000	CYPSP	All Where Secondary Sch's are located and children live.							1400 students annually (13 - 14 years) Teachers ASB options & choices - includes all project costs, inc Coordination	Rebecca Searle-Jones, Community Safety - BDC
8	Being Safe	Prevention, Education & Consultation	Yes (Feb 08)	Priority 4 - Children & young people achieve their potential (options & choices). Priority 7 - Essex is a safe place to live. NI 115 Substance misuse by young people. Local Indicator 7.1 Repeat incidents of domestic violence. NI 17 perceptions of ASB. Local Indicator 7.2 Feeling Safe. NI 20 Assaults with injury crime rate. NI 111 First time entrants to the Youth Justice System aged 10-17. NI 39 Rate of Hospital Admissions per 100,000 for alcohol related harm. NI 195 Improved street & environmental cleanliness (Graffiti, debris, litter & fly posting)	All Year 8 pupils (11/12 years) within the Braintree District to be appraised of diversity issues and be equipped with the skills and knowledge to make choices and understand prevention, education and support networks and techniques.	£6,000	CYPSP	All Where Secondary Sch's are located and children live.							1300 Students annually (12 years) Teaches options & Choices (ASB; Racism; Homophobia; Bullying) Includes all project costs, inc Coordinator	Janet Peatling, Community Safety BDC
9	CCTV Operative	Prevention, Education & Enforcement	Yes (Feb 08)	Priority 4 - Children & young people achieve their potential (options & choices). Priority 7 - Essex is a safe place to live. NI 115 Substance misuse by young people. Local Indicator 7.1 Repeat incidents of domestic violence. NI 17 perceptions of ASB. Local Indicator 7.2 Feeling Safe. NI 20 Assaults with injury crime rate. NI 111 First time entrants to the Youth Justice System aged 10-17. NI 39 Rate of Hospital Admissions per 100,000 for alcohol related harm. NI 195 Improved street & environmental cleanliness (Graffiti, debris, litter & fly posting)	To assist with crewing the vehicle enabling additional hours for vehicle deployment across the Braintree District; proving & disproving ASB; continuation of Op Marple.	£7,000		All							2 Part Time posts funded by BDC £25k p. yr till Sep 2010 - Cover shortfall in hours & Leave (629 additional hours p.a.)	Jayne Wakeling, Community Safety BDC

BRAINTREE DISTRICT CDRP Spending Plan 2008.09

No.	Project	Type of Activity (Prevention, Education, Enforcement, Consultation)	Agreed	LAA Priorities & Contribution to Targets	Aim	Revenue Project Costs (REVISED)	Projects involving other CDRPs / Partnerships	District Coverage (Wards)	BCU (£50,092 BD Allocation)	Police Authority (ALLOCATION £6,749)	Partnership Pot	EDAP	(Ring Fenced Police HQ (Essex Watch))	Other Funding	Comments & Outcomes	LEAD Officer/Agency
10	ASB Support Officer (CCTV Vehicle Coordinator)	Prevention, Education & Enforcement	Yes (Feb 08)	Priority 4 - Children & young people achieve their potential (options & choices). Priority 7 - Essex is a safe place to live. NI 115 Substance misuse by young people. Local Indicator 7.1 Repeat incidents of domestic violence. NI 17 perceptions of ASB. Local Indicator 7.2 Feeling Safe. NI 20 Assaults with injury crime rate. NI 111 First time entrants to the Youth Justice System aged 10-17. NI 39 Rate of Hospital Admissions per 100,000 for alcohol related harm. NI 195 Improved street & environmental cleanliness (Graffiti, debris, litter & fly posting)	To provide back office support for the CCTV vehicle (staff rota's, deployment; servicing; fuelling; liaising with partners; downloading etc.)	£15,000		All							Recruited May, commenced 9th June 08. P/T 32hrs p.wk. until 31st March 2011. (Maureen Gurr)	Jayne Wakeling, Community Safety BDC
11	CCTV Vehicle (running costs)	Prevention, Education & Enforcement	Yes (Feb 08)	Priority 4 - Children & young people achieve their potential (options & choices). Priority 7 - Essex is a safe place to live. NI 115 Substance misuse by young people. Local Indicator 7.1 Repeat incidents of domestic violence. NI 17 perceptions of ASB. Local Indicator 7.2 Feeling Safe. NI 20 Assaults with injury crime rate. NI 111 First time entrants to the Youth Justice System aged 10-17. NI 39 Rate of Hospital Admissions per 100,000 for alcohol related harm. NI 195 Improved street & environmental cleanliness (Graffiti, debris, litter & fly posting)	To ensure the vehicle meets legal & operational requirements (MOT, insurance; Fuel; Servicing - vehicle & cameras) enabling the undertaking of overt and covert surveillance proportionate to the problems (proving/disproving ASB).	£5,000		All							On going running costs funded via CDRP for the life of the vehicle (agreed Feb 2006 RAG)	Jayne Wakeling, Community Safety BDC
12	Software licence / upgrades (keypad)	Consultation	Yes (May 08)	Local Indicator 7.2 Feeling Safe.	In order to use Keypad technology for the purpose of evaluating and consulting with people involved in multiple projects/initiatives undertaken by CDRP.	No cost Yr 1	Potential for all CDRPs	Wherever consultation takes place - potentially covering all the District.							£1,000 annual licence cost (not needed in 1st year Conference Keypad system - income generative)	Janet Peatling, Community Safety BDC
13	CDRP Conference	Prevention, Education & Consultation	Yes (Feb 08)	All Priorities	An annual Partnership Conference is held by the Braintree District Crime & Disorder Reduction Partnership & Children & Young People's Strategic Partnership. The conference is used as a consultation tool in developing new projects, sharing best practice, meeting LAA2 targets & effective Partnership working (mainstreaming).	£5,000	Involves stakeholders involved in the CDRP & CYPSP working in the Braintree District. Involves Young People. All Essex CDRP, CYPSP & LSP Chairs and Community Safety Managers invited.	All							Unique Partnerships event. Mainstreams activity and builds cohesion.	H Goodwin, Community Safety & Craig Horner, Children & Young People's Strategic Partnership (BDC Officers)
14	CDRP Literature & Consultation materials	Prevention, Education & Consultation	Yes (Feb 08)	All Priorities		£3,971	Potential joint CDRP promotions. CYPSP & LSP	All							Linked in with CDRP Promotion & Conference Budget 2007/08. Also some paid for by BDC	Janet Peatling, Community Safety BDC
15	JAGs (Joint Action Groups)	Prevention, Education & Enforcement	Yes (May 08)	Priority 4 - Children & young people achieve their potential (options & choices). Priority 7 - Essex is a safe place to live. NI 115 Substance misuse by young people. Local Indicator 7.1 Repeat incidents of domestic violence. NI 17 perceptions of ASB. Local Indicator 7.2 Feeling Safe. NI 20 Assaults with injury crime rate. NI 111 First time entrants to the Youth Justice System aged 10-17. NI 39 Rate of Hospital Admissions per 100,000 for alcohol related harm. NI 195 Improved street & environmental cleanliness (Graffiti, debris, litter & fly posting)	There are 3 JAG's, one for Witham, Braintree & Halstead. These are Police meetings that involve multiple agencies. Targetted analysis to address & resolve locality issues of an anti-social nature.	£3,000	CYPSP	All							To address ASB issues within locality areas: Braintree, Halstead & Witham	Alan Gooden Essex Police
16	Training	Prevention, Education & Consultation	Yes (Feb 08)	All Priorities	To provide & deliver essential training for colleagues on a variety of issues and to enable these staff to provide training across the CDRP as appropriate.	£1,810	CYPSP & LSP	All							Regular training for Colleagues on partnership work and legislative training.	Jayne Wakeling - Community Safety BDC
17	Womens Support Worker (3 way split with other areas - Probation Post)	Prevention, Education & Enforcement	Yes (Feb 08)	Priority 7 - Essex is a safe place to live. NI 115 Substance misuse by young people. Local Indicator 7.1 Repeat incidents of domestic violence. NI 17 perceptions of ASB. Local Indicator 7.2 Feeling Safe. NI 20 Assaults with injury crime rate. NI 111 First time entrants to the Youth Justice System aged 10-17. NI 39 Rate of Hospital Admissions per 100,000 for alcohol related harm.	To support those who are subject to Domestic Abuse	£4,000	Other CDRPs (Maldon & Chelmsford)	All							Continued support of this project since 2005. May some times cover other areas as needed to provide a seamless service across the County.	Peter Woollard, Essex Probation Service
18	Drug & Alcohol Reference Thematic Group	Prevention, Education & Enforcement	Yes (May 08)	Priority 7 - Essex is a safe place to live. NI 115 Substance misuse by young people. Local Indicator 7.1 Repeat incidents of domestic violence. NI 17 perceptions of ASB. Local Indicator 7.2 Feeling Safe. NI 20 Assaults with injury crime rate. NI 111 First time entrants to the Youth Justice System aged 10-17. NI 39 Rate of Hospital Admissions per 100,000 for alcohol related harm.	To assist with meeting the LAA2 targets	£500	CYPSP, Colchester & Tendring	Targetted where needed			£1,000				Implement Young People's Braintree District D&A Strategy (links with Diversionary Activities Marple Op)	Moir Owers DARG Chair - Essex Police
19	Prolific & Priority Offenders Thematic Group	Prevention, Education & Enforcement	Yes (May 08)	Priority 7 - Essex is a safe place to live. NI 18 Adult reoffending rates for those under Probation Supervision. NI 115 Substance misuse by young people. Local Indicator 7.1 Repeat incidents of domestic violence. NI 17 perceptions of ASB. Local Indicator 7.2 Feeling Safe. NI 20 Assaults with injury crime rate.	To assist with meeting the LAA2 targets	£500	Uttlesford, Maldon & Chelmsford	All plus targetted where needed							Maximise effectiveness of implementing 3 strands of PPO strateic themes	Moir Owers - Essex Police

No.	Project	Type of Activity (Prevention, Education, Enforcement, Consultation)	Agreed	LAA Priorities & Contribution to Targets	Aim	BRAINTREE DISTRICT Costs (REVISED)	Projects involving other CDRPs / Partnerships	District Coverage (Wards)	BCU (£50,092 BD Allocation)	Police Authority (ALLOCATION £6,749)	*Partnership Pot	EDAP	(Ring Fenced Police HQ (Essex Watch))	Other Funding	Comments & Outcomes	LEAD Officer/Agency
20	Domestic Abuse Panel Thematic Group	Prevention, Education & Enforcement	Yes (May 08)	Priority 7 - Essex is a safe place to live. NI 18 Adult reoffending rates for those under Probation Supervision NI 115 Substance misuse by young people. Local Indicator 7.1 Repeat incidents of domestic violence. Local Indicator 7.2 Feeling Safe. NI 20 Assaults with injury crime rate.	To assist with meeting the LAA2 targets	£500	Uttlesford, Maldon & Chelmsford	All plus targetted where needed							Panel not currently meeting - will be reformed Autumn 2008	Links to project 26 - Chair DV Panel
21	Hate Crime Panel Thematic Group	Prevention, Education & Enforcement	Yes (May 08)	Priority 7 - Essex is a safe place to live. NI 18 Adult reoffending rates for those under Probation Supervision NI 115 Substance misuse by young people. Local Indicator 7.1 Repeat incidents of domestic violence. Local Indicator 7.2 Feeling Safe. NI 20 Assaults with injury crime rate.	To assist with meeting the LAA2 targets	£500	Braintree District CYPSP & other CDRPs as appropriate	All plus targetted where needed								Clive Mardner - Chair Hate Crime Panel. TBC - Links to Project 26
22	Diversionary Activities (Sustainable Diversionary Activities Plan for targeted ASB behavioural changes)	Prevention, Education, Enforcement & Consultation	Yes (Feb 08)	Priority 4 - Children & young people achieve their potential (options & choices). Priority 7 - Essex is a safe place to live. NI 115 Substance misuse by young people. Local Indicator 7.1 Repeat incidents of domestic violence. NI 17 perceptions of ASB. Local Indicator 7.2 Feeling Safe. NI 20 Assaults with injury crime rate. NI 111 First time entrants to the Youth Justice System aged 10-17. NI 39 Rate of Hospital Admissions per 100,000 for alcohol related harm. NI 195 Improved street & environmental cleanliness (Graffiti, debris, litter & fly posting)	To positively engage with young people to divert their energies into proactive activities, thus reducing the affects and perceptions of ASB.	£4,000	Braintree District CYPSP	All plus targetted where needed		£749	£1,220				Marple Ops (£2000). Reparation Projects (Coordination). Positive Engagement via community development (£1,969) (Fire Break to be funded from pooled resources (Schs & YO Fund))	TBC. Community Safety BDC & Tina Smith - Essex Police
23	Analyst / Researcher (SA) Fall back plan - Consultant	Statistics, Advice & Consultation	Yes (May & July 08)	CADAR Legislation	To assist with meeting the Government & LAA2 targets	£16,000	Essex Wide	All							Priority Research to be engaged to undertake SA R	H Goodwin, Community Safety BDC
24	Data Warehouse - Fall back plan - Consultant	Statistics & Consultation	Yes (May 08)	CADAR Legislation	To assist with meeting the Government & LAA2 targets	Not Needed until 2009	Essex Wide	All							Allocation Estimate for Countywide Project - Work being undertaken, project will not be fully in place until 2009. £10,000	
25	Migrant Community Development Officer		Yes (May 08)	Priority 4 - Children & young people achieve their potential (options & choices). Priority 7 - Essex is a safe place to live.	To provide information to new communities about life in UK. Support integration, community cohesion and assist different organisations with the issues regarding migrants.	£2,000	Braintree District CYPSP	All plus targetted where needed						£2,000	Pooled funding from numerous sources to sustain this post and the effective work that is being undertaken (of interest to all agencies). (£2,000 from CDRP & £2,000 from Essex Police)	Charmaine Dean, Community Services, BDC
26	Partnership Thematic Gp Chair		Yes (May 08)	Priority 4 - Children & young people achieve their potential (options & choices). Priority 7 - Essex is a safe place to live.	To ensure that the thematic gps meet and there is mainstreaming & synergy across the gp projects & initiatives		Other CDRPs across Essex as appropriate	All		£6,000						H Goodwin, Community Safety, BDC
27	Pastoral Work		Yes (May 08)	Priority 4 - Children & young people achieve their potential (options & choices). Priority 7 - Essex is a safe place to live. NI 115 Substance misuse by young people. Local Indicator 7.1 Repeat incidents of domestic violence. NI 17 perceptions of ASB. Local Indicator 7.2 Feeling Safe. NI 20 Assaults with injury crime rate. NI 111 First time entrants to the Youth Justice System aged 10-17. NI 39 Rate of Hospital Admissions per 100,000 for alcohol related harm. NI 195 Improved street & environmental cleanliness (Graffiti, debris, litter & fly posting).	To provide positive support & engagement with those partaking in the night time economy to assist with agencies to minimising adverse affects (ASB & Criminal Damage, Personal Safety etc.)	£4,000	Other CDRPs across Essex as appropriate	Targetted where needed								Alan Gooden, Essex Police & H Goodwin, Community Safety, BDC
28	Road Safety Thematic Gp	Prevention, Education, Enforcement & Consultation	Yes (July 08)	Priority 5 (Part of) - Essex Roads are Safer. NI 47 Reduce KSIs or serious injuries.	To assist with meeting the Government & LAA2 targets	£1,000	Other CDRPs across Essex as appropriate	All							To provide prevention & education (Road Runner Project) for 16/19 year olds at College/Sch's across the District on Road Safety - inc Speeding, Alcohol & Drugs, & consequences. 60 per day for one week. Bike/Scooter Safe Project - 50.	Susan Barlow, Road Safety, ECC. TBC - Links to Project 26
29	Criminal Damage Thematic Gp	Prevention, Education, Enforcement & Consultation	Yes (July 08)	Priority 4 - Children & young people achieve their potential (options & choices). Priority 7 - Essex is a safe place to live. NI 115 Substance misuse by young people. Local Indicator 7.1 Repeat incidents of domestic violence. NI 17 perceptions of ASB. Local Indicator 7.2 Feeling Safe. NI 20 Assaults with injury crime rate. NI 111 First time entrants to the Youth Justice System aged 10-17. NI 39 Rate of Hospital Admissions per 100,000 for alcohol related harm. NI 195 Improved street & environmental cleanliness (Graffiti, debris, litter & fly posting)	To assist with meeting the Government & LAA2 targets	£1,000	Other CDRPs across Essex as appropriate	All								Links to project 26 - Chair Criminal Damage
30	Strategic Assessment Consultation	Needs assessment	Yes (via email July 08)			£5,727		All							Focus Groups with hard to reach (elderly & young people). Feeling Safe & Perceptions.	
31	Venue Hire & Refreshments	Meetings	Yes (via email July 08)	The meetings contribute to all LAA targets	To develop, implement, review and evaluate Partnership working as appropriate		CDRP & CYPSP	All			£1,000					

BRAINTREE DISTRICT CDRP Spending Plan 2008.09

No.	Project	Type of Activity (Prevention, Education, Enforcement, Consultation)	Agreed	LAA Priorities & Contribution to Targets	Aim	Revenue Project Costs (REVISED)	Projects involving other CDRPs / Partnerships	District Coverage (Wards)	BCU (£50,092 BD Allocation)	Police Authority (ALLOCATION £6,749)	*Partnership Pot	EDAP	(Ring Fenced Police HQ (Essex Watch))	Other Funding	Comments & Outcomes	LEAD Officer/Agency
	SUB TOTAL					£130,000			£80,798	£6,749	£23,500	£3,720	£0	£14,000		
	Remaining					£0			£0	£0	£0	£0	£5,000	£0		